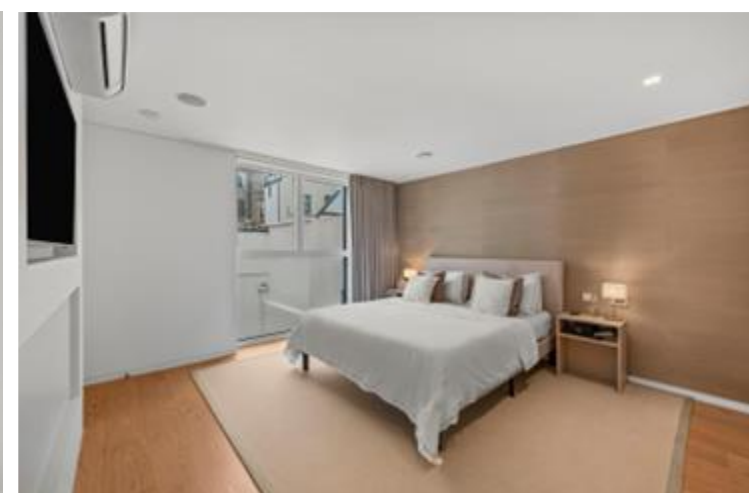
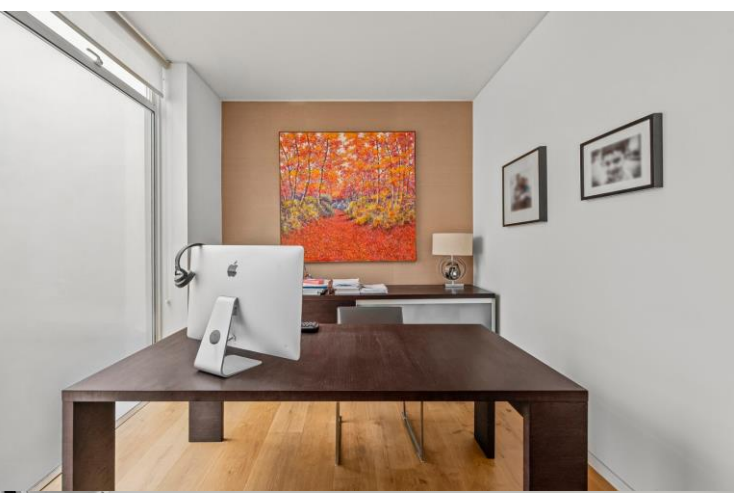




Gloucester Mews West  
London, W2

CHESTERTONS

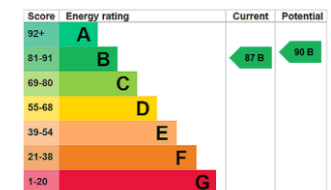




Set on a quiet cobbled mews in W2, this modern five-bedroom house is arranged over four floors with a layout that feels structured, open and well considered. Clean architectural lines and a consistent high-quality finish run throughout, complemented by underfloor heating and a 24-hour air filtration system. The lower ground floor is the standout level, extending over 26 ft with excellent width and ceiling height. A bespoke, fully integrated kitchen is centred around a large island, with streamlined cabinetry and full width glazing opening directly onto a private patio, drawing natural light across the entire floor. The accommodation is arranged across the upper levels, with five well-proportioned bedrooms and five bath and shower rooms, ensuring each bedroom is served by either an en-suite or immediate access to its own bathroom. A number of the bedrooms are arranged as principal suites across different floors, benefiting from built in storage and air conditioning, while one of the rooms is currently arranged as a study, providing a defined workspace without interrupting the overall flow. The finish is precise and minimal, with timber flooring, integrated storage and a neutral palette used consistently throughout, enhancing the sense of space across each level.

Asking Price £2,750,000

- Contemporary five-bedroom mews house set over four floors
- Five bath and shower rooms, serving each bedroom
- 26 ft open plan reception with strong proportions
- Bespoke kitchen with central island and integrated appliances
- Private patio accessed directly from the living space
- Multiple principal bedroom suites benefiting from air conditioning
- Separate study providing a defined workspace
- Excellent ceiling heights enhancing light and volume
- Underfloor heating
- Integrated storage across all levels
- 24-hour air filtration system
- Close proximity to Hyde Park and Lancaster Gate



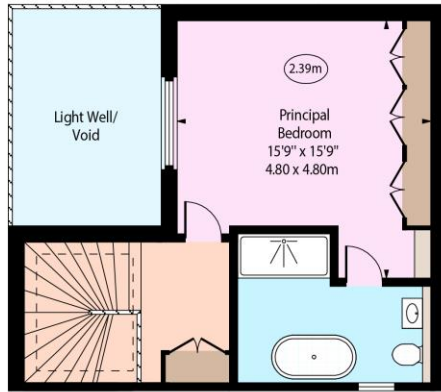
**Tenure:** Freehold  
**Service Charge:** £0  
**Ground Rent:** Peppercorn  
**Local Authority:** Westminster  
**Council Tax Band:** G

*Chestertons Hyde Park & Marylebone Sales*

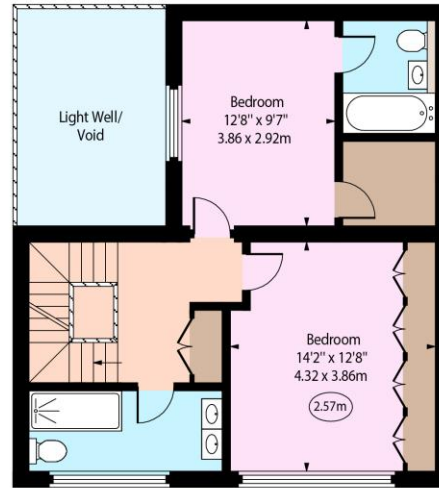
40 Connaught Street  
 London  
 W2 2AB  
 hydepark@chestertons.co.uk  
 020 7298 5900  
 chestertons.co.uk

# Gloucester Mews West, W2

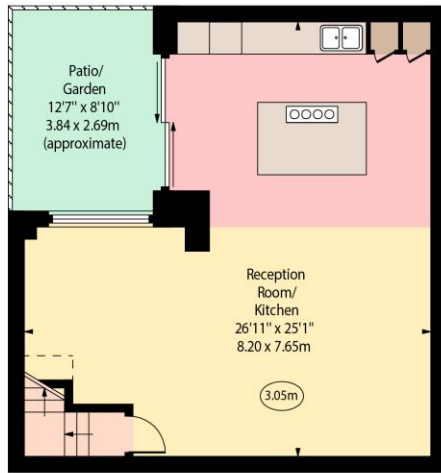
○ - Ceiling Height



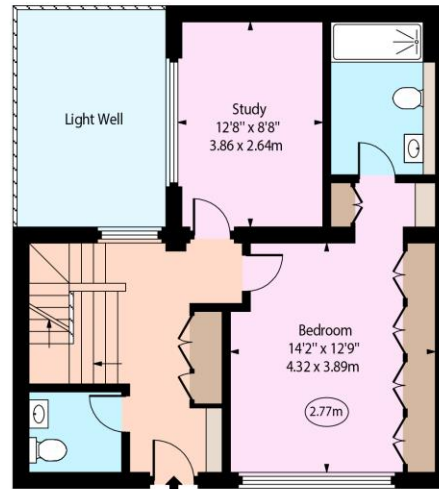
Second Floor



First Floor



Lower Ground Floor



Ground Floor

Approx Gross Internal Area 2160 Sq Ft - 200.66 Sq M  
(Excluding Light Well/Void)

Every attempt has been made to ensure the accuracy of the floor plan shown. However, all measurements, fixtures, fittings, and data shown are approximate interpretations and for illustrative purposes only. Measured according to the RICS. Not To Scale.  
www.goldlens.co.uk  
Ref. No. 031530E

Chesterton UK Services Limited trading as Chestertons for themselves and for the vendor of this property whose agents they are, give notice that (i) these particulars do not constitute any part of an offer or contract, (ii) all statements contained within these particulars are made without responsibility on the part of Chestertons or the vendor, (iii) whilst made in good faith, none of the statements contained within these particulars are to be relied upon as a statement or representation of fact, (iv) any intending purchasers must satisfy themselves by inspection or otherwise as to the correctness of each of the statements contained within these particulars, (v) the vendor does not make or give either Chestertons or any person in their employment any authority to make or give representation or warranty whatsoever in relation to this property. Wide angle lenses may be used. ©Copyright Chestertons | Chesterton UK Services Limited | Registered Office 5th Floor, The Lantern, 75 Hampstead Road, London, NW1 2PL Registered Company Number 05334580.



This paper is 100% recyclable