



Lonsdale Square

Barnsbury, N1

£1,995 per week
(£8,645 pcm)

An unparalleled five bedroom house in the heart of Angel. This property has been refurbished throughout with an exacting attention to detail and is enviably situated on the West side of Lonsdale Square.

Office Image



Lonsdale Square

Barnsbury, N1

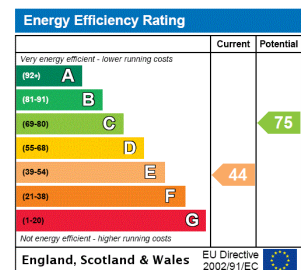
- Beautifully Finished Five Bedroom House
- Enormous Amount of Living and Entertaining Space
- Large Private Garden
- Recently Refurbished
- Original Features Restored
- Incredible Location on Lonsdale Square



An unparalleled five bedroom house in the heart of Angel. This property has been refurbished throughout with an exacting attention to detail. The entrance level opens onto a large reception room and high specification kitchen fitted with contemporary appliances and a dining area overlooking the large private garden, an excellent living and entertaining space. The property further benefits from a second double reception room with original features lovingly restored, and guest bathroom. The master bedroom, and its palatial en-suite bathroom, arranged across the first floor of the house and benefits from a great deal of built in storage. The further four bedrooms are all large doubles complemented by full suite bathrooms. The house has a flexible

Tenure: Long Let
Furnished, Part Furnished, Ur

Additional tenant charges apply
 Tenancy Agreement Fee: £222
 References per Tenant/Guarantor: £60
 Inventory check (approx. £100 – £250 inc. VAT)
chestertons.com/property-to-rent/applicable-fees



Chestertons Islington Lettings

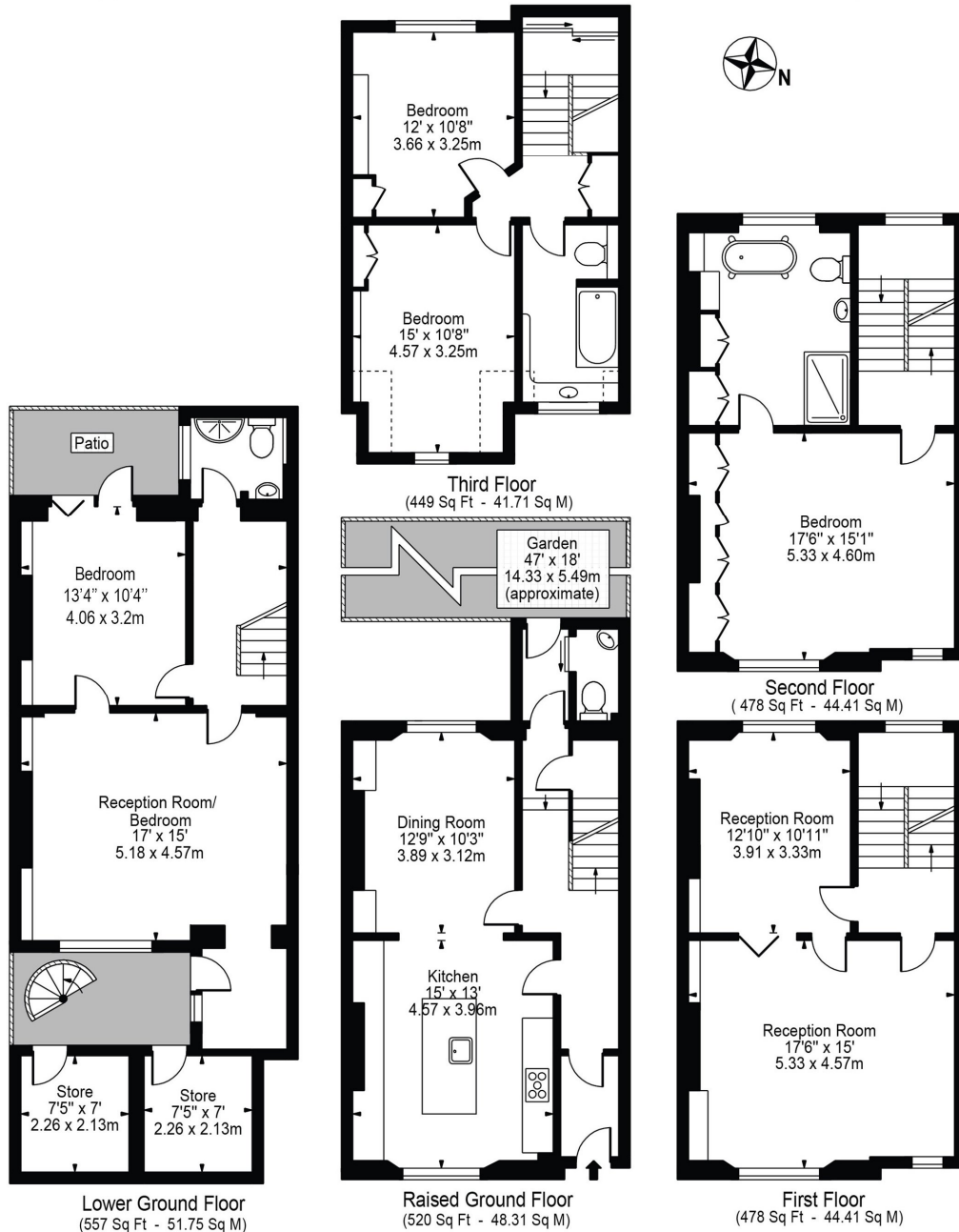
327-329 Upper Street
 London
 N1 2XQ
lettings.islington@chestertons.com
 0207 226 4221
chestertons.com



Lonsdale Square, N1

Approx. Gross Internal Area 2482 Sq Ft - 230.59 Sq M
(Including Restricted Height Area & Excluding Stores)

Approx. Gross Internal Area Of Stores 113 Sq Ft - 10.50 Sq M



For Illustration Purposes Only - Not To Scale

This floor plan should be used as a general outline for guidance only and does not constitute in whole or in part an offer or contract. Any intending purchaser or lessee should satisfy themselves by inspection, searches, enquiries and full survey as to the correctness of each statement. Any areas, measurements or distances quoted are approximate and should not be used to value a property or be the basis of any sale or let.