

Energy Efficiency Rating		Current	Potential
Very energy efficient - lower running costs			
(92 plus)	A		
(81-91)	B		
(69-80)	C	80	82
(55-68)	D		
(39-54)	E		
(21-38)	F		
(1-20)	G		
Not energy efficient - higher running costs			

View This Property!

Get in touch today on the contact details below and we'd be delighted to arrange a viewing of this property for you.

W: hannells.co.uk
E: chaddesden@hannells.co.uk
T: 01332 281400

Viewing Strictly By Appointment Only

We recommend our preferred partner law firms who are solicitors selected by Us for their experience and efficiency in providing conveyancing services. We receive a referral fee of between £225 - £250 per completed transaction.

We recommend our preferred partner Mortgage intermediaries who are mortgage specialists available to provide you with the advice you need. We receive a referral fee of approximately £350 per completed transaction.

We recommend our preferred partner Insurance Company who provide Buildings and Contents Insurance. We receive a referral fee of approximately £25 per completed transaction.

We recommend our preferred partner Removal Company for home removals. We receive a referral fee of £50 per completed transaction.

You are NOT obliged to use our preferred partner services.

Viewing Arrangements: Strictly by prior appointment with Hannells Estate Agents.

These particulars are intended only as a guide to the property. They do not form part of the contract and although they are believed to be correct, they may be inaccurate in important aspects.

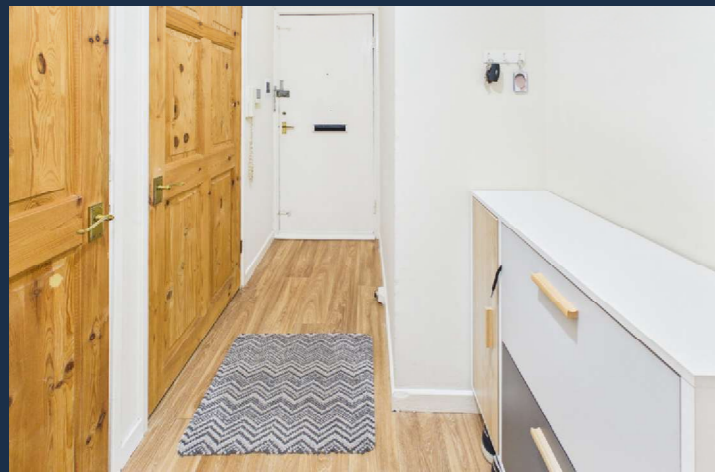
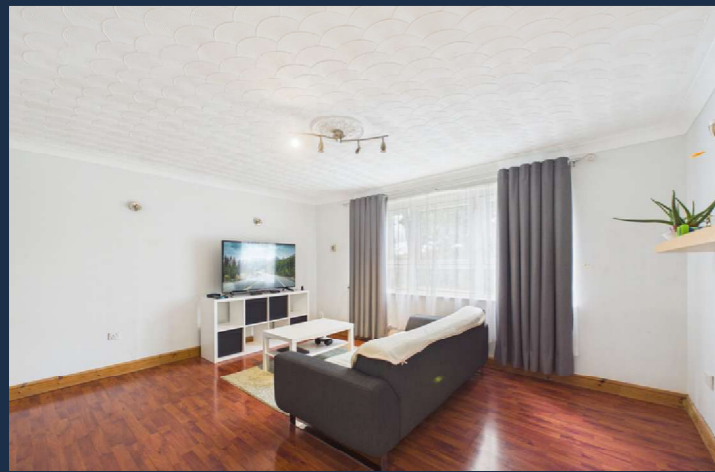
Waterford Drive, Chaddesden, DE21 6TL | Leasehold

A spacious and well-presented first-floor apartment, ideally suited to first-time buyers and investment purchasers alike. The accommodation includes two double bedrooms, a fitted kitchen, and a generous living room, offering comfortable and practical living space throughout. Conveniently located and an early viewing is highly recommended.

- Well-Presented And Spacious First Floor Flat
- Ideal First Time Home, Viewing Recommended
- Two Double Bedrooms
- EPC Rating C, Standard Construction
- Council Tax Band A, Leasehold



These particulars are intended to give a brief description of the property as a guide to prospective buyers. Accordingly, their accuracy is not guaranteed and Hannells Ltd nor the vendors accept any liability of their contents. They do not constitute an offer for sale. Any prospective purchasers should satisfy themselves by inspection or otherwise as to the correctness of any statements or information in these particulars. Please refer to the Agents if you require further clarification of information. The Property Misdescription Act 1991 - The Agent has not tested any apparatus, equipment, fixtures and fittings or services and so cannot verify that they are in working order or fit for the purpose. A buyer is advised to obtain verification from their Solicitor or Surveyor. References to the Tenure of the Property are based on information supplied by the Seller. The agent has not had sight of the title documents. A buyer is advised to obtain verification from their Solicitor.



Full Description:

The accommodation benefits from of gas central heating, UPVC double glazing and briefly comprises of:- communal hallway, entrance into reception hall with ample storage space, good size living room, dining kitchen, two double bedrooms and bathroom with a three piece suite.

Outside, there are communal gardens.

Waterford Drive is well situated for Chaddesden and its amenities including shops, schools and transport links together with excellent access for Derby City Centre and further road links. Early viewing is recommended.

Room Measurements & Details:

Communal Entrance To First Floor:

Entrance Hall: (4'11" x 24'2") 1.50 x 7.37

Living Room: (12'4" x 14'10") 3.76 x 4.52

Kitchen: (5'7" x 14'4") 1.70 x 4.37

Bedroom One: (12'4" x 9'10") 3.76 x 3.00

Bedroom Two: (12'3" x 9'11") 3.73 x 3.02

Bathroom: (5'6" x 7'7") 1.68 x 2.31

Leasehold Information:

Leasehold - Derby Homes

Ground rent £10 per annum
Service charge £1500 per annum

Buyer Information:

1. Anti-Money Laundering (AML) Regulations: We are legally required to verify all purchasers. The cost is £24 (inc VAT) per person.
2. General: These sales particulars are intended as a general guide only. If any detail is especially important, please contact us—particularly if you're travelling a long distance to view.
3. Measurements: All measurements are approximate and provided for guidance only.
4. Services: Services, equipment, and appliances have not been tested. Buyers should arrange their own surveys or inspections.
5. These details are given in good faith but do not form part of any offer or contract. Information should be independently verified. Hannells Limited and its employees or agents are not authorised to make representations or warranties regarding the property.

Leasehold

A Moving Experience...