

An aerial photograph of Sutton Park, showing a dense forest in the background and a residential area in the foreground. A specific development site, 'The Willows', is highlighted with a semi-transparent yellow and green overlay. This site contains a multi-story brick building with a flat roof, a parking lot with several cars, and a landscaped area with trees and a path. The surrounding residential area consists of various houses and apartment blocks.

**SUTTON PARK**

**THE WILLOWS**

# Flat 2, The Willows, Walsall Road, Four Oaks

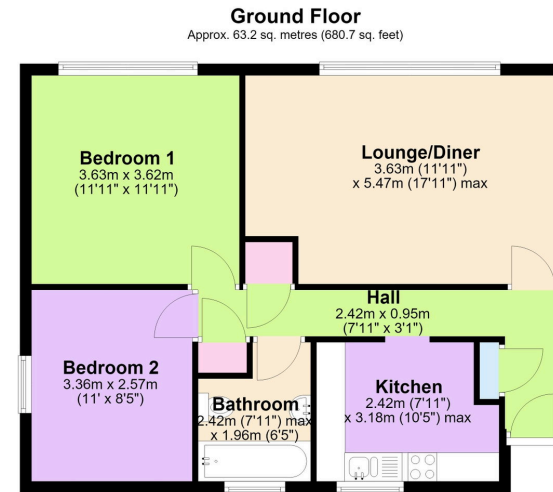
Offers Over £180,000

🛏️ 2 🚿 1 🚗 1



- Ground floor apartment
- Opportunity to modernise and make it your own.
- Sutton Park just across the road.
- No onward chain
- Spacious lounge diner with views over the communal gardens
- Long lease already extended
- Walking distance to Mere Green, Four Oaks and Butlers Lane train stations.
- Parking and garage





Total area: approx. 63.2 sq. metres (680.7 sq. feet)

This floor plan is for illustrative purposes only and may not be to scale. While every effort has been made to ensure accuracy, measurements are approximate and should not be relied upon for any purpose.  
Plan produced using PlanUp.

If you've been looking for a spacious ground floor apartment in a fantastic location that you can truly make your own, Flat 2 at The Willows is well worth a look. With two double bedrooms, a generous lounge diner overlooking the beautifully maintained communal gardens, its own private garage and a long lease already extended at a cost of just under £35,000, it's a home that offers space, potential and a huge financial bonus for the next owner.

