



Manor Farm Road, Birmingham

burchell
edwards



Property Description

Step inside this impressive Victorian terrace and be captivated by its timeless appeal. Boasting three spacious bedrooms and two elegant reception rooms, this property is a true testament to period architecture. High ceilings amplify the sense of space, while large windows flood the rooms with natural light.

Outside, the property offers the convenience of on-street parking, making daily life a breeze. The rear garden has been thoughtfully slabbed, providing a low-maintenance outdoor area ideal for al fresco dining or simply unwinding after a long day.

Located in a sought-after neighbourhood, this home is perfectly positioned to enjoy the best of both worlds - a tranquil residential setting with easy access to local amenities, schools, and transport links. Don't miss the opportunity to make this exceptional property your own.

Entrance Porch

small area for shoes

Entrance Hall

Lounge

Front bay window, radiator and spotlights

Dining Room

double glazed window to rear and radiator

Kitchen

kitchen comprising of a range of wall and base units sink and drainer, oven with hob and extractor fan, tiled with back splash and spotlights

Utilty

area for white goods with plumbing

Bedroom One

double glazed window to front. spotlights and radiator

Bedroom Two

double glazed window to rear

Bedroom Three

double glazed window to rear, radiator and boiler

Bathroom

Bath with shower overhead, wash hand basin, w/c and fully tiled

Loft Space

skylight, radiator and storage

Front Garden

small patio on front and steps to street

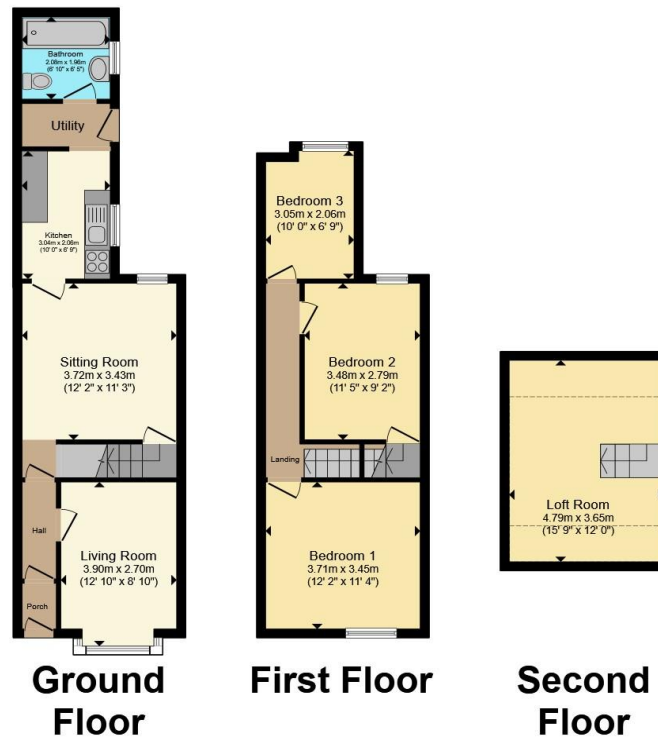
Rear Garden

fully slabbed patio and back access









Total floor area 96.4 m² (1,037 sq.ft.) approx

This floor plan is for illustrative purposes only. It is not drawn to scale. Any measurements, floor areas (including any total floor area), openings and orientation are approximate. No details are guaranteed, they cannot be relied upon for any purpose and they do not form part of any agreement. No liability is taken for any error, omission or misstatement. A party must rely upon its own inspection(s). Powered by www.propertybox.io



To view this property please contact Burchell Edwards on

T 0121 733 3553
E shirley@burchelledwards.co.uk

183 Stratford Road Shirley
 SOLIHULL B90 3AU

EPC Rating: E Council Tax
 Band: C

Tenure: Freehold

view this property online burchelledwards.co.uk/Property/SHI209171



1. MONEY LAUNDERING REGULATIONS Intending purchasers will be asked to produce identification documentation at a later stage and we would ask for your co-operation in order that there will be no delay in agreeing the sale. 2. These particulars do not constitute part or all of an offer or contract. 3. The measurements indicated are supplied for guidance only and as such must be considered incorrect. Potential buyers are advised to recheck measurements before committing to any expense. 4. We have not tested any apparatus, equipment, fixtures, fittings or services and it is in the buyers interest to check the working condition of any appliances.

Burchell Edwards is a trading name of Connells Residential which is registered in England and Wales under company number 1489613, Registered Office is Cumbria House, 16-20 Hockliffe Street, Leighton Buzzard, Bedfordshire, LU7 1GN. VAT Registration Number is 500 2481 05.

See all our properties at www.burchelledwards.co.uk | www.rightmove.co.uk | www.zoopla.co.uk

Property Ref: SHI209171 - 0002