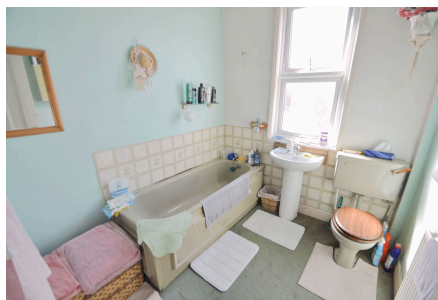


## Annesley Road, Wallasey

£140,000 Council Tax Band B EPC Rating D

3 1 2



Full of potential, this three bedroom semi detached property boasts a sunny south westerly facing rear garden, uPVC double glazing and gas central heating radiator. In need of some modernisation in parts, but offering great potential this home is one you can move into and take your time renovating. Located just a stone's throw from Central Park, meaning it's also situated not far from the local shops in Poulton and the wider range in Liscard including frequent bus routes, commuter links. Interior: inviting hallway, living room, sitting room, and dining kitchen on the ground floor. Off the first-floor landing there are the three bedrooms and bathroom. Complete with uPVC double glazing and gas central heating. Exterior: attractive rear garden area. Do not delay in booking a viewing, be quick!

## Key Features

- Three Bed Semi Detached Home
- South Westerly Facing Garden
- EPC Rating D
- Council Tax Band B
- uPVC Double Glazing and GCH
- 
- 
- 



Copyright V360 Ltd 2025 | [www.houseviz.com](http://www.houseviz.com)