



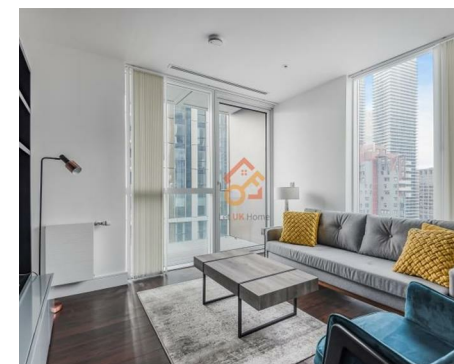
Let **UK** Home

1 Bedrooms

Flat

Located in London

**£2,850 Per Month**



[info@letukhome.co.uk](mailto:info@letukhome.co.uk)

<https://www.letukhome.co.uk/>

01795 358 886



# 9 Harbour Way London

E14 9DX



Laet UK Home are excited to offer this stunning one bedroom apartment in Maine Tower, part of Harbour Central.

The flat comprises a spacious open kitchen with a stylishly attached dining area, a magnificent living room leading to a large private balcony with great views, one bright bedroom with built-in wardrobe, one modern bathroom and ample storage.

Residents will benefit from a range of amenities, such as concierge, private cinema, gym, residents' lounge, plaza, and other living facilities.

The development has a prime location with very convenient transportation. It is within walking distance to South Quay DLR Station and Canary Wharf Underground Station, making it easy to reach central London and quickly access all major city landmarks. It also provides easy access to several renowned universities in London, such as University College London (UCL), King's College London, London School of Economics (LSE), and Imperial College London.

The area around the development is home to many iconic landmarks, art centers, museums, and theaters, such as the London Bridge, Royal Observatory Greenwich, Canary Wharf Arts Centre, Museum of London, and Royal Institute of British Architects, offering a rich cultural atmosphere. Additionally, there are Chinese supermarkets like Tian Tian Supermarket, numerous Asian restaurants, and tea shops nearby. The nearby Canary Wharf area also features many shops, cafes, and bars, ranging from brand boutiques and commercial streets to shopping malls, providing a comprehensive shopping experience.

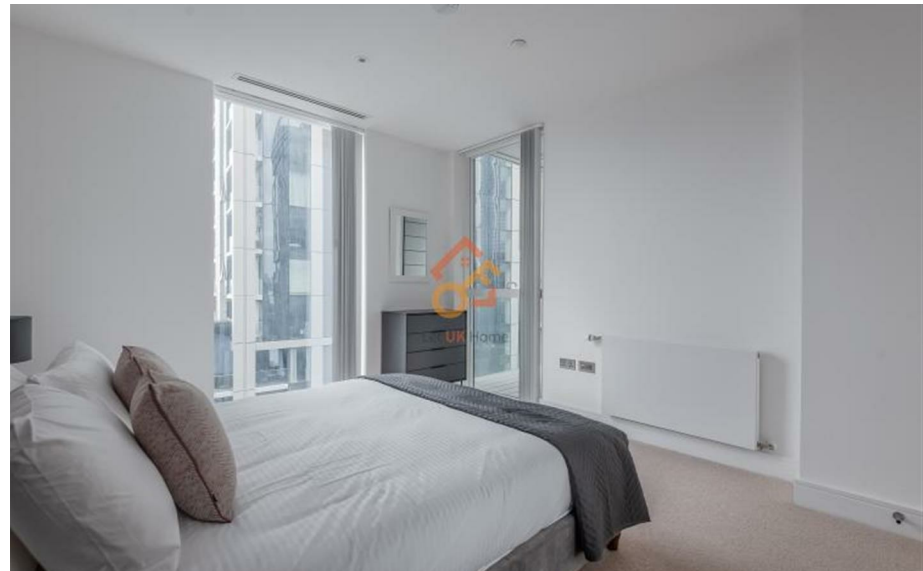
# 9 Harbour Way London

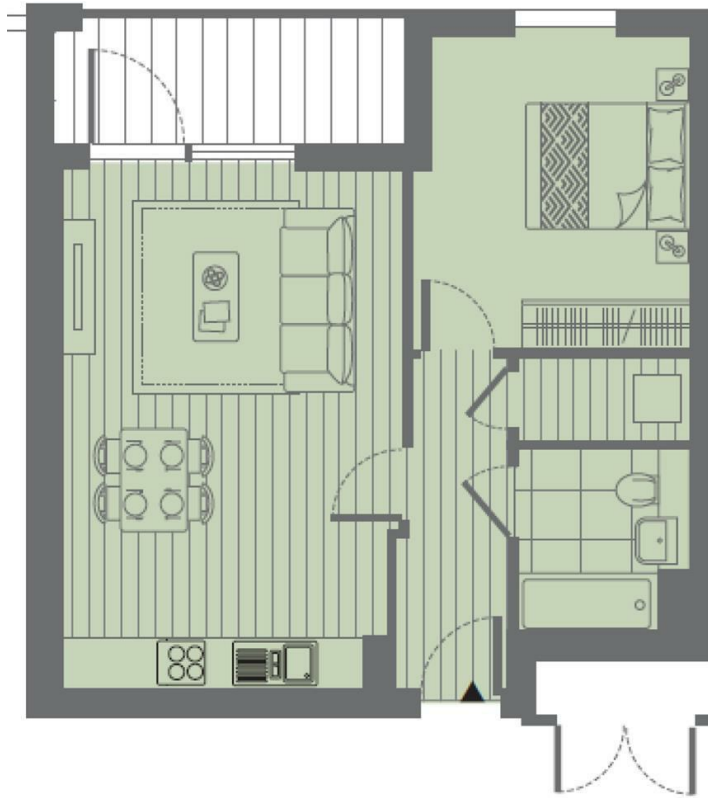
£2,850 Per Month



- 13th Floor
- 24h Security
- Residents Lounge
- EPC Rating: B

- Concierge Service
- The Gym
- Cinema & Game Room
- Virtual Tour Available





**Total floor area** 52 square metres



Let **UK** Home

3F 2 Eastbourne Terrace  
 Paddington  
 London  
 W2 6LG

01795 358 886

info@letukhome.co.uk

**Council Tax Band: E**

**Local Authority:**

Agents Note: Whilst every care has been taken to prepare these particulars, they are for guidance purposes only. All measurements are approximate and are for general guidance purposes only and whilst every care has been taken to ensure their accuracy, they should not be relied upon and potential buyers/tenants are advised to recheck the measurements.

Energy Efficiency Rating		Current	Potential
Very energy efficient - lower running costs			
(92 plus) <b>A</b>			
(81-91) <b>B</b>		84	84
(69-80) <b>C</b>			
(55-68) <b>D</b>			
(39-54) <b>E</b>			
(21-38) <b>F</b>			
(1-20) <b>G</b>			
Not energy efficient - higher running costs			
<b>England &amp; Wales</b>		EU Directive 2002/91/EC	

<https://www.letukhome.co.uk/>