





Property Description

Nestled in a desirable residential location, this beautifully presented three-bedroom semi-detached home offers a perfect blend of comfort, practicality, and modern family living. With a shared driveway, garage, and thoughtfully designed interiors, it is an ideal choice for growing families or professionals seeking a stylish retreat.

The property opens with a bright and inviting entrance hall, setting the tone for the warmth and character within. The living room flows seamlessly into a dedicated dining area, perfect for family meals and social gatherings. A well-appointed kitchen provides ample storage and workspace, complemented by a utility area and a convenient wet room.

Upstairs, you'll find three generously sized bedrooms, each thoughtfully designed to create comfortable and versatile spaces. A modern family bathroom completes the first floor, offering both style and functionality.

Externally, the property benefits from a shared driveway and garage, ensuring secure parking and storage.

Situated in a sought-after area, this home enjoys close proximity to local schools, shops, and transport links, making it a convenient base for family life and commuting.

This property combines practicality with aspirational living, offering a wonderful opportunity to secure a home that grows with

you.

Entrance Hall

A welcoming entrance hall sets the tone for this delightful home, featuring a staircase rising to the first floor and a practical understairs storage cupboard ideal for coats, shoes, or household essentials. From here, there is convenient access to both the living room and kitchen,

Living Room

A bright and airy living room with a large window to the front elevation, filling the space with natural light. The room is enhanced by a feature gas fireplace, creating a warm and inviting focal point. Finished with modern laminate flooring, this stylish space flows seamlessly through to the adjoining dining room, making it ideal for both everyday family living and entertaining.

Dining Room

Flowing directly from the living room, the dining room offers a versatile space ideal for family meals and entertaining. Double doors fill the room with natural light. With its seamless connection to both the living area and utility, this room creates a practical and sociable hub at the heart of the home.

Kitchen

Fitted with a comprehensive range of wall and

base units, complemented by quality worktops and a stainless steel sink with drainer and mixer tap. Integrated appliances include a gas hob with oven and extractor over, along with a fridge, while plumbing is provided for a washing machine. Finished with practical tiled flooring, the kitchen enjoys natural light from a side-facing window and offers direct access to the rear of the property via a convenient door, making it both functional and inviting.

Utility

A handy utility area positioned to the rear aspect of the home, offering practical space for everyday household tasks. This area provides direct access to the wet room and opens out to the rear garden, ensuring convenience and functionality while seamlessly connecting indoor and outdoor living.

Wet Room

Conveniently accessed from the utility area, the wet room is designed with practicality in mind. Featuring a modern shower space, wash basin, and WC, it provides a versatile ground floor facility ideal for busy family living or guest use. Its thoughtful layout ensures ease of maintenance while adding valuable flexibility to the home’s accommodation.

First Floor Landing:

Generously sized bedrooms with scope for personalisation, plus a family bathroom.

Bedroom One

A well-proportioned double bedroom

overlooking the rear garden, ideal as a double room or versatile guest space.

Bedroom Two

A generously sized principal bedroom positioned to the front elevation, offering ample space for furnishings. Bright and welcoming, this room provides a comfortable retreat with scope for personalisation.

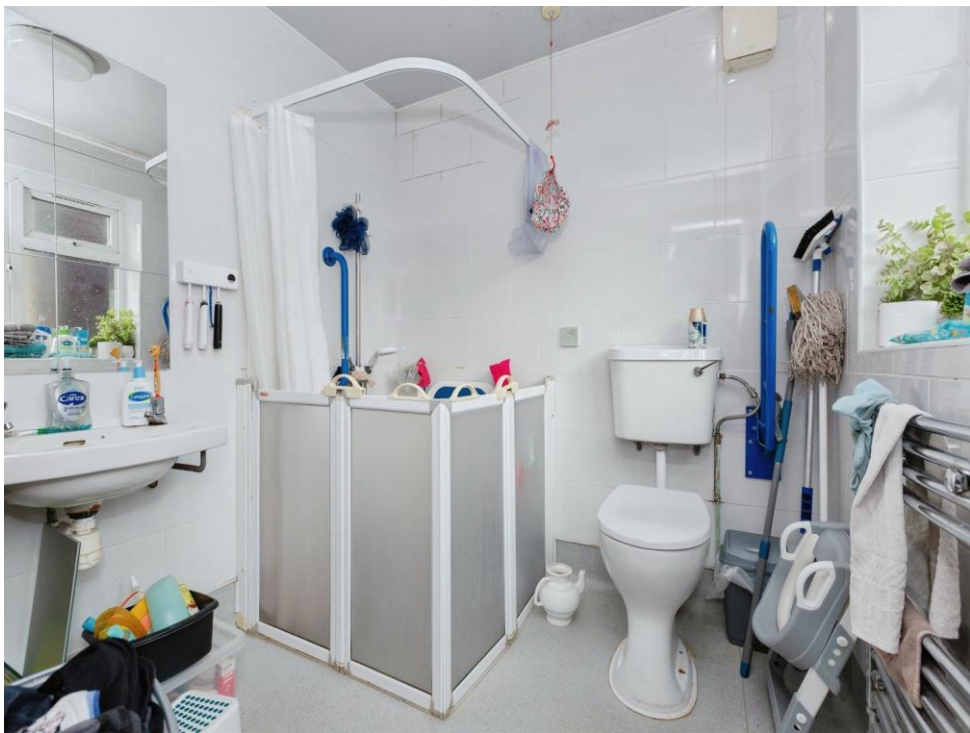
Bedroom Three

A thoughtfully designed third bedroom, positioned to the front aspect. Compact yet practical, it serves well as a child’s bedroom, nursery, or home office

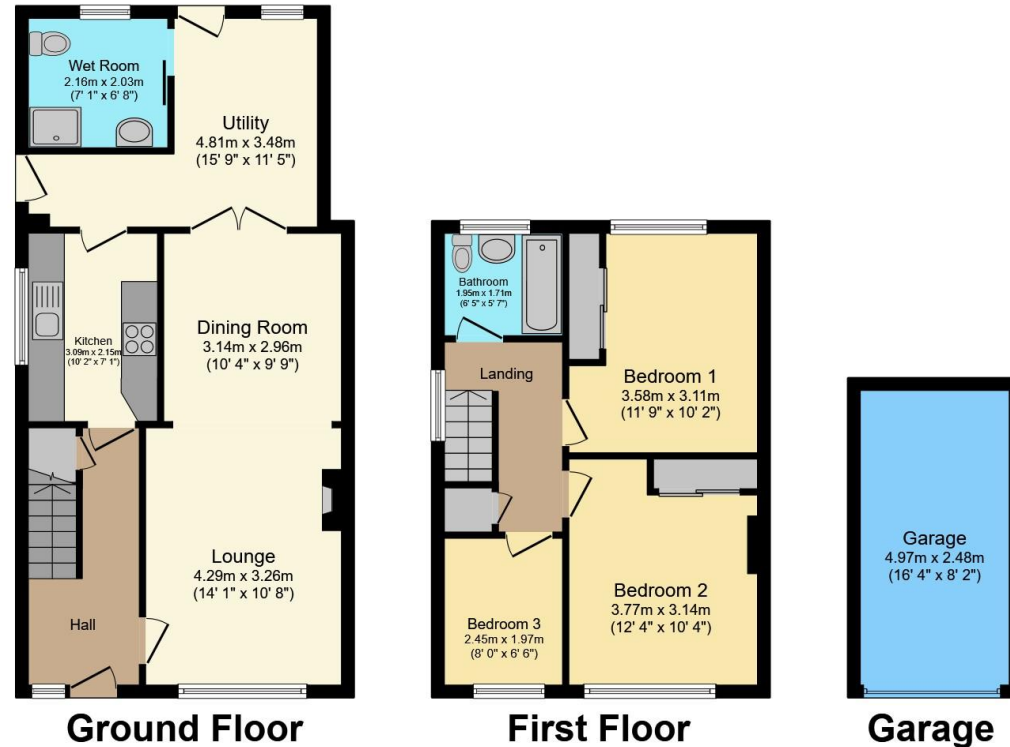
Family Bathroom

The family bathroom is fitted with a modern suite comprising a panelled bath, wash basin, and WC. Finished with neutral décor, it provides a functional and stylish space for everyday use.









Total floor area 107.9 m² (1,161 sq.ft.) approx

This floor plan is for illustrative purposes only. It is not drawn to scale. Any measurements, floor areas (including any total floor area), openings and orientation are approximate. No details are guaranteed, they cannot be relied upon for any purpose and they do not form part of any agreement. No liability is taken for any error, omission or misstatement. A party must rely upon its own inspection(s). Powered by www.propertybox.io

Connells

To view this property please contact Connells on

T 0116 262 0022
E leicester@connells.co.uk

22-24 Halford Street
 LEICESTER LE1 1JB

EPC Rating: C Council Tax
 Band: A

Tenure: Freehold

view this property online connells.co.uk/Property/LTR325276



1. MONEY LAUNDERING REGULATIONS Intending purchasers will be asked to produce identification documentation at a later stage and we would ask for your co-operation in order that there will be no delay in agreeing the sale. 2. These particulars do not constitute part or all of an offer or contract. 3. The measurements indicated are supplied for guidance only and as such must be considered incorrect. Potential buyers are advised to recheck measurements before committing to any expense. 4. We have not tested any apparatus, equipment, fixtures, fittings or services and it is in the buyers interest to check the working condition of any appliances.

Connells Residential is registered in England and Wales under company number 1489613, Registered Office is Cumbria House, 16-20 Hockliffe Street, Leighton Buzzard, Bedfordshire, LU7 1GN. VAT Registration Number is 500 2481 05.

See all our properties at www.connells.co.uk | www.rightmove.co.uk | www.zoopla.co.uk

Property Ref: LTR325276 - 0004