



131 Broomfield Crescent, Edinburgh

Edinburgh

Offers Over £190,000



131 Broomfield Crescent

Set within the well-established Bloomfield area of Edinburgh, this appealing two-bedroom upper flat offers a stylish and comfortable living space, ideal for first-time buyers, young professionals or those seeking a well-connected home. The location combines a peaceful neighbourhood feel with excellent local amenities and transport links to the city centre.

Upon entry, you are welcomed by a bright and inviting hallway that sets the tone for the home. The spacious lounge is filled with natural light thanks to a large window and features neutral décor, offering ample room for both relaxation and dining. This flows seamlessly into the fully equipped upgraded kitchen - a modern space boasting sleek cabinetry, integrated appliances including an oven, induction hob, dishwasher and microwave and room for freestanding appliances such as a washing machine. The fridge freezer is also included in the sale.

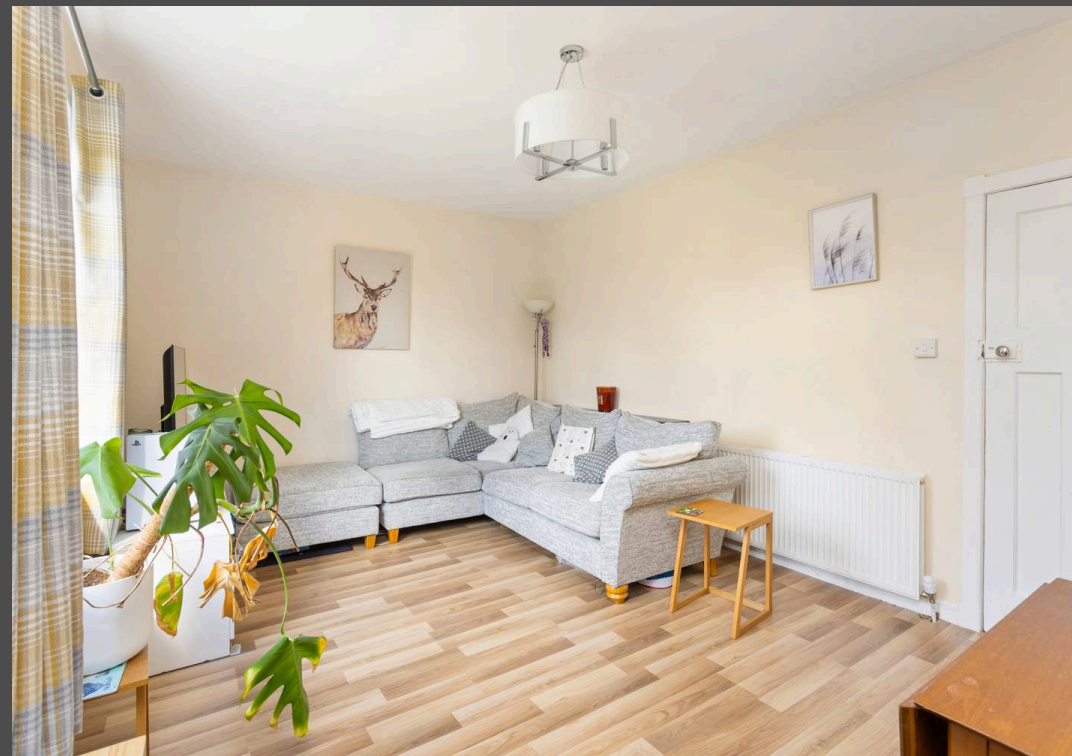
The principal bedroom is generously proportioned with a plush grey carpet underfoot and offers space for a king-size bed and freestanding furniture, complemented by a large window that adds to the room's airy feel. The second bedroom is flexible in use - perfect as a guest room, home office or nursery and includes a handy storage cupboard.

Completing this lovely home is a modern bathroom featuring a bath with overhead shower, marble-effect wet wall panels and a heated towel rail for added comfort.



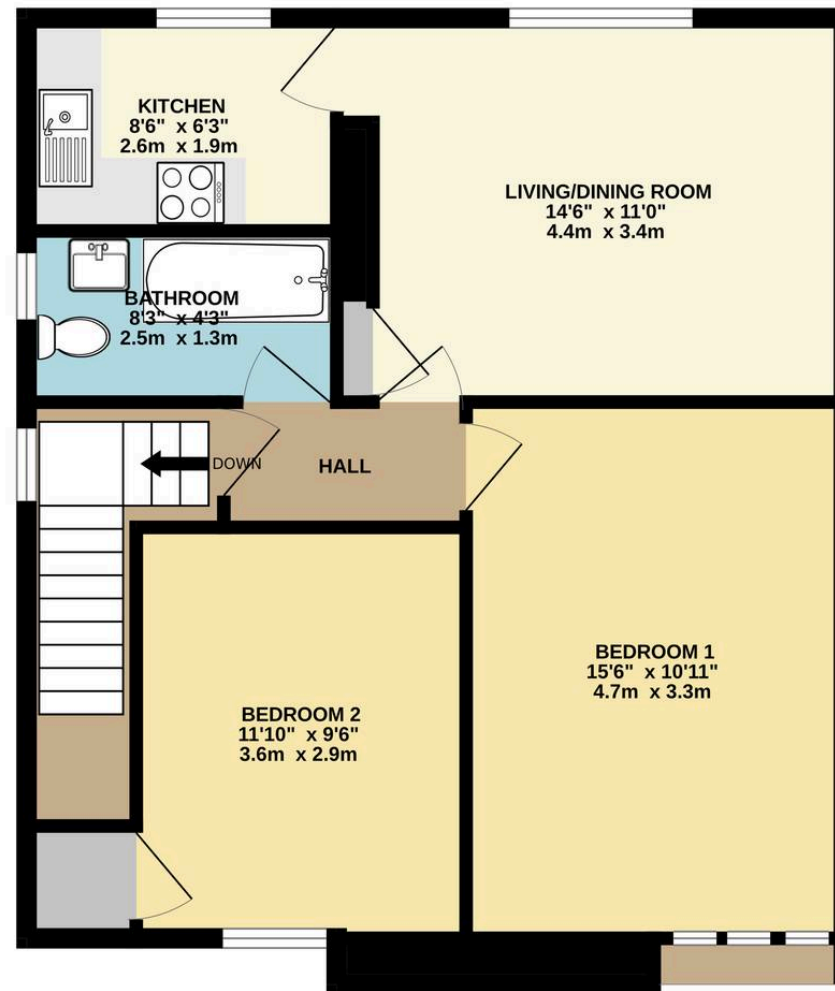
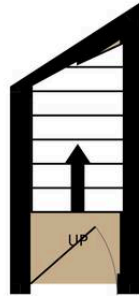
Externally, the property benefits from a south-west facing private rear garden, laid to lawn and offering potential to be fenced for additional privacy. On-street parking is also available. This well-maintained flat presents an excellent opportunity to secure a quality home in a popular and well-connected part of Edinburgh. With its neutral interiors, modern finishes and private garden, it offers a comfortable lifestyle in a location that balances convenience with a welcoming neighbourhood atmosphere.





GROUND FLOOR

1ST FLOOR



Whilst every attempt has been made to ensure the accuracy of the floorplan contained here, measurements of doors, windows, rooms and any other items are approximate and no responsibility is taken for any error, omission or mis-statement. This plan is for illustrative purposes only and should be used as such by any prospective purchaser. The services, systems and appliances shown have not been tested and no guarantee as to their operability or efficiency can be given.

Made with Metropix ©2025





Bridges Properties

15 Shairps Business Park, Livingston - EH54 5FD

01501519435

info@bridges-properties.co.uk

www.bridges-properties.co.uk/

