



## HOLLIES WAY, SW12

£2,800 PCM

- Brand new
- Amazing location
- Two double bedrooms
- Garden
- Under floor heating
- Energy rating: C





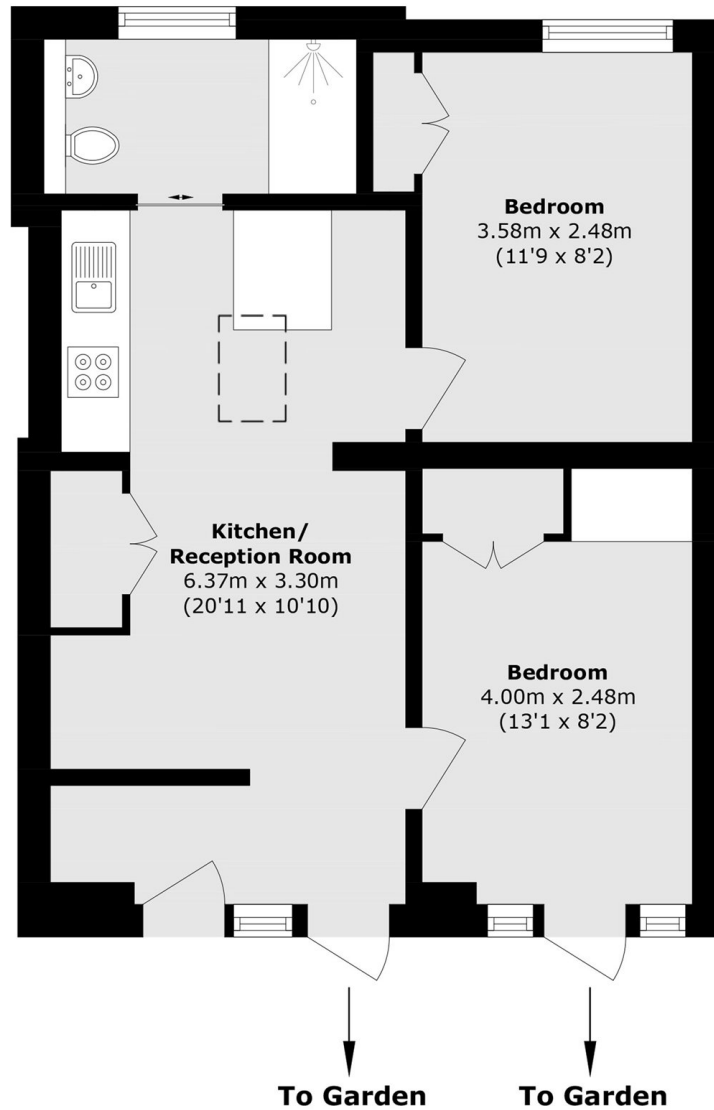
## ABOUT THE HOME

A beautifully presented, one of a kind two double bedroom house in the heart of the nightingale triangle. This property is completely brand new throughout, with a south facing garden, underfloor heating, and comes furnished.

Amazing location within easy reach of Balham High street & Wandsworth common for all local shops, bars and restaurants.







Total area (approx.): 46.2 sq. m (497.2 sq. ft)

#### JACKSONS BALHAM

8-11 Balham Station Road,  
London, SW12 9SG  
Sales: 020 8675 6555  
Lettings: 020 8675 6565

Energy Rating: We aim to make our particulars both accurate and reliable. However they are not guaranteed; nor do they form part of an offer or contract. If you require clarification on any points then please contact us, especially if you're traveling some distance to view. Please note that appliances and heating systems have not been tested and therefore no warranties can be given as to their good working order.