



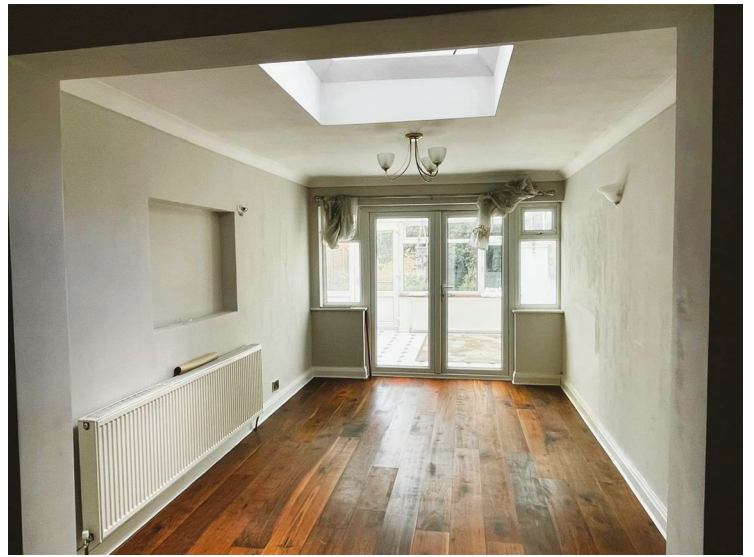
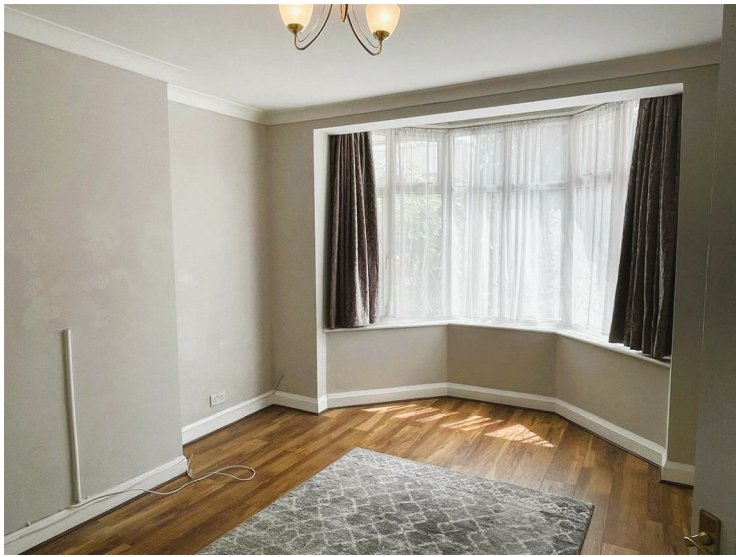
Hanworth Road, Hounslow, TW4 5LF

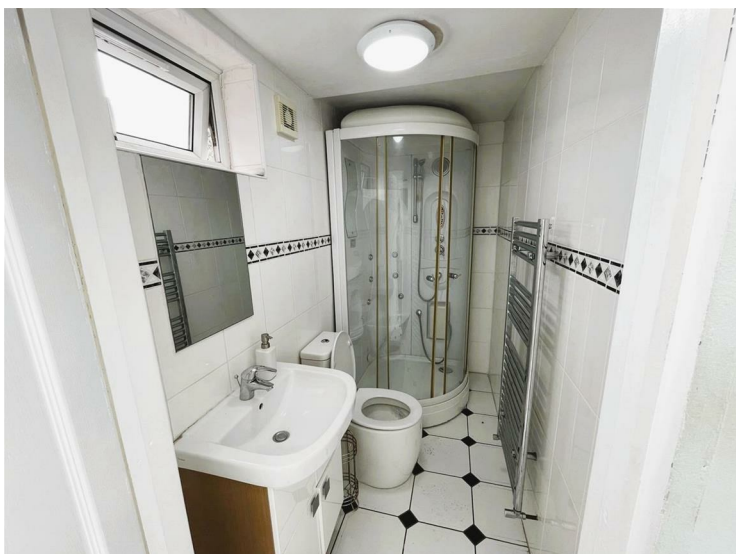
£3,200 PCM

A well-presented four bedroom semi-detached family home ideally located in this popular residential area with access to Hounslow Town Centre, Heathlands School, and a variety of transport links. The accommodation comprises two reception rooms, a fitted kitchen, a bright conservatory, and a ground floor shower room. To the first floor are four well-proportioned bedrooms and a family bathroom, offering flexible living space ideal for families. Externally, the property benefits from a private driveway providing off-street parking and a generous rear garden, perfect for outdoor enjoyment. Additional benefits include double glazing and gas central heating throughout. The property offered on an unfurnished basis and is available immediately.

A partner of
The Guild Of Professional Estate Agents
with a network of over 700 independent estate agents

Associated Office: 121 Park Lane, Mayfair, London W1K 7AG t 020 7318 7075







Approximate Gross Internal Area 1894 sq ft - 176 sq m

Ground Floor Area 1176 sq ft – 109 sq m

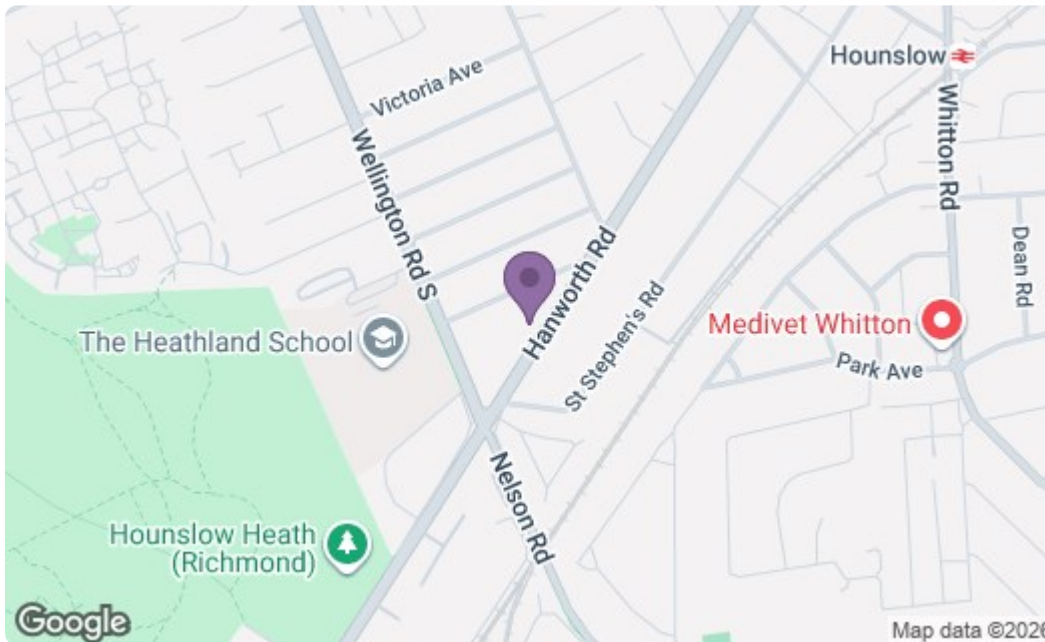
First Floor Area 718 sq ft – 67 sq m



Ground Floor



First Floor



Energy Efficiency Rating		Current	Potential
Very energy efficient - lower running costs			
(92 plus) A			
(81-91) B			
(69-80) C			
(55-68) D		66	
(39-54) E			
(21-38) F			
(1-20) G			
Not energy efficient - higher running costs			
England & Wales		EU Directive 2002/91/EC	
Environmental Impact (CO ₂) Rating		Current	Potential
Very environmentally friendly - lower CO ₂ emissions			
(92 plus) A			
(81-91) B			
(69-80) C			
(55-68) D			
(39-54) E			
(21-38) F			
(1-20) G			
Not environmentally friendly - higher CO ₂ emissions			
England & Wales		EU Directive 2002/91/EC	

A partner of

The Guild Of Professional Estate Agents
with a network of over 700 independent estate agents

Associated Office: 121 Park Lane, Mayfair, London W1K 7AG t 020 7318 7075