



Summer Gardens, KT8

£1,650,000

Dexters



Summer Gardens, KT8

A wonderful example of a beautiful Edwardian home, this five bedroom detached house has been renovated by the current owner to an exceptional standard making it feel like a warm and welcoming family home.

Arranged over three floors and spanning approximately 2450 sq ft, this stunning period home offers generous living space throughout. It features a bay fronted primary reception room with a gas fireplace, while the rear boasts a modern open plan kitchen and dining area ideal for entertaining with bi-fold doors opening onto the garden. A second reception room provides a cosy retreat.

The first floor comprises four bedrooms, including two with an en suites, along with a modern family bathroom. The top floor offers an additional bedroom with en-suite and a study.

Further benefits include a downstairs WC, utility room, landscaped garden, a garage and solar panels with a Tesla battery.

Summer Gardens is located close to the boutiques, restaurants and cafés of Hampton Court Village as well as it's excellent transport links and access to the River Thames. Bushy Park and The Palace are also within easy reach.

Features

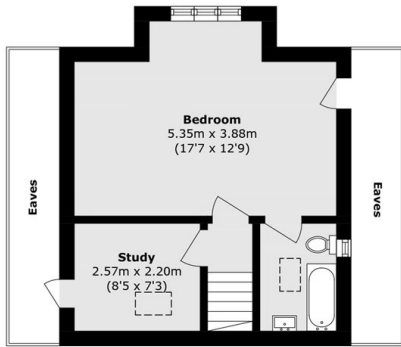
- Five Bedrooms
- Period
- South Facing Garden
- Off Street Parking
- Detached
- Garage



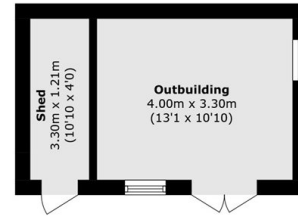




Summer Gardens, East Molesey, KT8



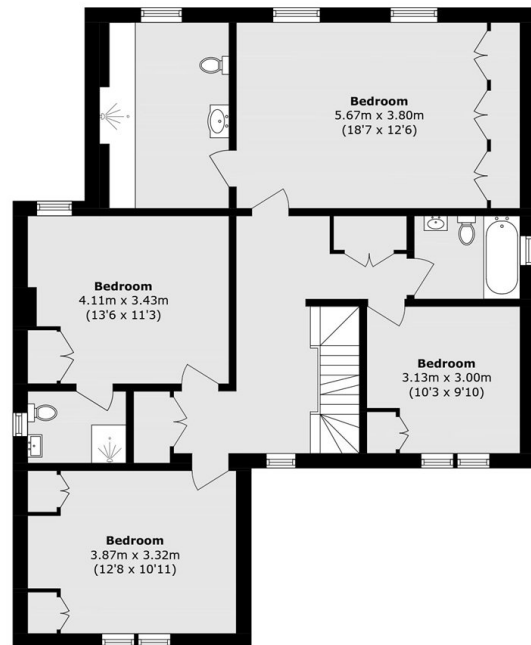
Second Floor



Ground Floor



Ground Floor



First Floor

Total (approx.): 255.3 sq. m (2748.0 sq. ft)

Outbuilding area (approx.): 17.6 sq. m (189.4 sq. ft)

(Excluding Eaves)