



**WARWICK SQUARE**  
PIMLICO

**JACKSON-STOPS** 

## WARWICK SQUARE PIMLICO, SW1V

ASKING PRICE: £1,500,000

A superb and very rare opportunity to purchase a ground floor Warwick Square apartment with its own private street level front door in Pimlico SW1.

Measuring in the region of 1120 sqft, this two bedroom apartment has the benefit of no onward chain, a share of the freehold, and a recently extended lease to 999 years.

Located on the south side of the square and with access to the award-winning gardens (including a tennis court) the property would suit all those seeking a central home, be that as a pied-a-terre or full time residence, downsizers and/or those looking for central London buy to let investment.

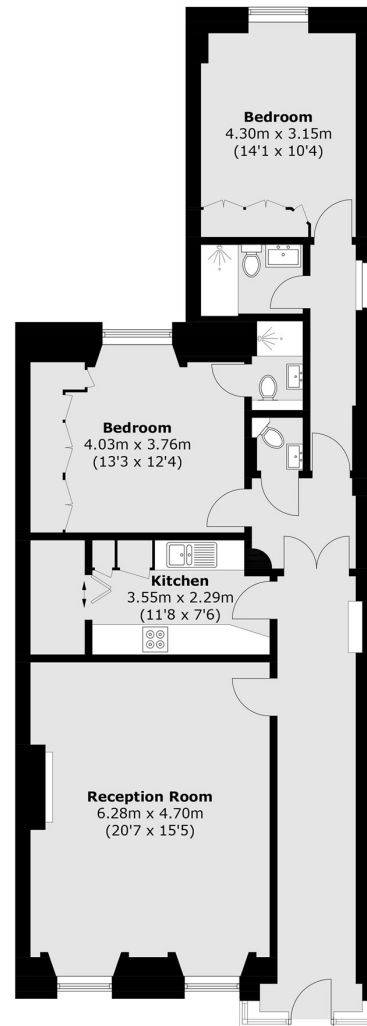
Warwick square is located close to Victoria Station with Overground and Underground services plus the Gatwick Express, making this apartment convenient for local, national, and international travel. Sloane Square, the gateway to the King's Road with its world class restaurants and boutique shopping is nearby.

### KEY FEATURES

- Share Of Freehold
- Service Charge: £5200 pa
- Grade II Listed
- Garden Square Access
- No Onward Chain
- Sole Agent







**Ground Floor**

Total area (approx.): 104.1 sq. m (1,120.5 sq. ft)

Energy Rating: D. We aim to make our particulars both accurate and reliable. However they are not guaranteed; nor do they form part of an offer or contract. If you require clarification on any points then please contact us, especially if you are travelling some distance to view. Please note that appliances and heating systems have not been tested and therefore no warranties can be given as to their good working order.

**ASKING PRICE: £1,500,000**

**PIMLICO**

**020 7828 4050**

pimlicosales@jackson-stops.com

jackson-stops.co.uk

**JACKSON-STOPS** 