



13A

Harlesden | | Brent | NW10 9AN

£1,950 Per Month



Key features

- Harlesden Station-5 minutes walk
- 2 BEDROOM GROUND FLOOR FLAT – GREENHILL PARK, HARLESDEN, BRENT, NW10

Description

GENERAL OVERVIEW

This well-presented two-bedroom ground floor flat is located in the popular Greenhill Park area of Harlesden, Brent. The property offers practical living accommodation with access to a private rear garden, making it suitable for professionals, couples, or small families seeking a convenient London location.

DINING ROOM

- Dedicated dining area suitable for everyday meals
- Functional layout with natural flow to adjoining rooms

LIVING ROOM

- Comfortable living space ideal for relaxation
- Suitable for shared or family use

KITCHEN

- Practical kitchen layout with adequate storage and workspace
- Designed for everyday cooking and shared use

BEDROOM 1

- Well-proportioned bedroom
- Suitable for double bed and storage

BEDROOM 2 ENSUITE

- Second bedroom with ensuite facility
- Suitable for privacy and convenience
- Ideal for sharers or guests

BATHROOM AND TOILET

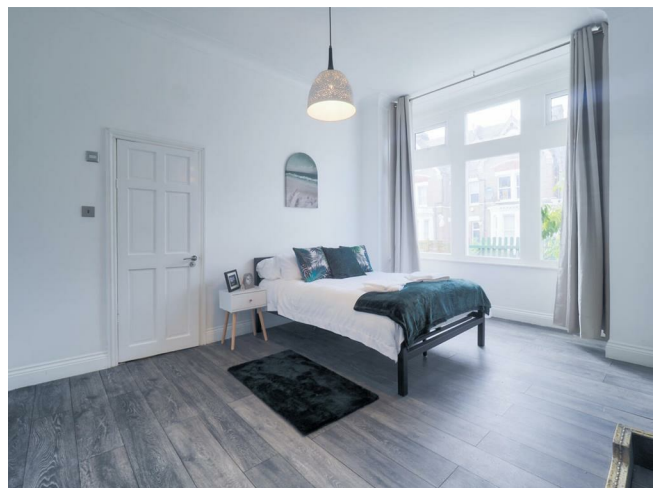
- Main bathroom serving the property
- Functional and practical layout

BACK GARDEN

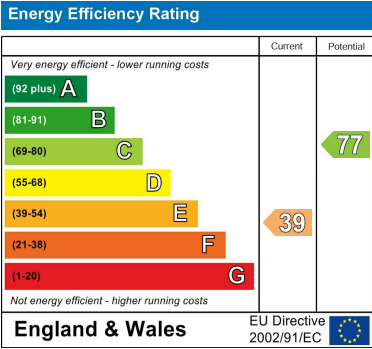
- Private rear garden
- Suitable for outdoor use and seasonal enjoyment

LOCATION BENEFITS

Directions







Council Tax Band C EPC Rating E



68 South Hill Avenue
Harrow
HA2 0NH
02081501988
info@leafyestates.co.uk
leafyestates.co.uk