



Hopton Road, SW16

£1,300 PCM

A first floor one bedroom garden flat in the heart of Streatham, offered in excellent condition throughout.

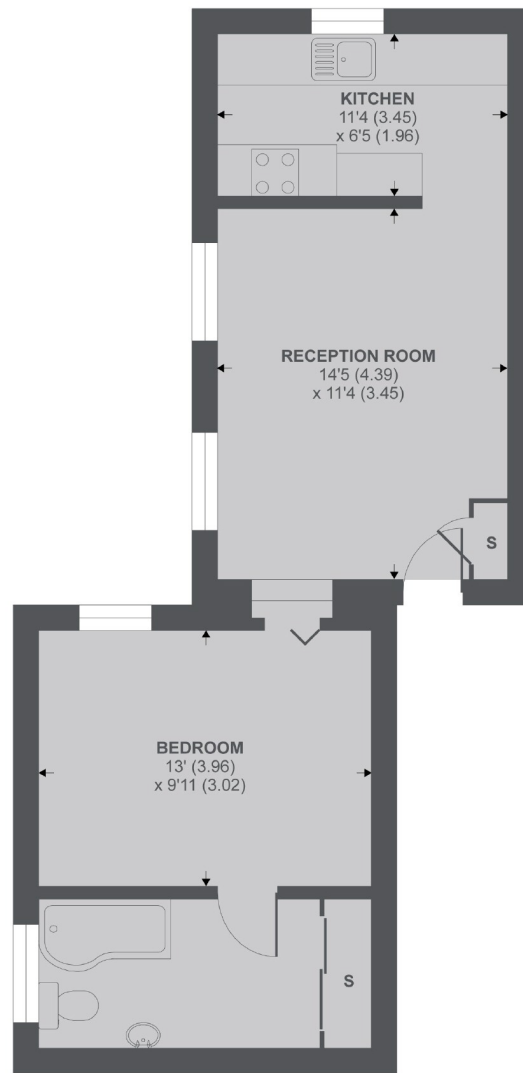
- Spacious Flat
- Open Plan Kitchen
- Bathroom Suite
- Private Section of Garden
- Furnished
- Close to Station

For further information on the costs associated with renting a property, please pop into our office or visit our website.



Located on a quiet residential road but within easy reach of both Streatham and Streatham Hill train stations. Also nearby is Streatham Common, the Streatham Hub which offers a 24 hours Tesco Superstore and leisure centre.





1st Floor

Hopton Road, SW16

APPROX FLOOR AREA 466 SQ.FT 43.2 SQ.M

Copyright nichecom.co.uk 2019 REF : 452428

Jacksons Streatham
1-3 De Montfort Parade
Streatham High Road
Streatham
London
SW16 1BU

Energy Rating: C We aim to make our particulars both accurate and reliable. However they are not guaranteed; nor do they form part of an offer or contract. If you require clarification on any points then please contact us, especially if you're traveling some distance to view. Please note that appliances and heating systems have not been tested and therefore no warranties can be given as to their good working order.