



**70 Searles Road  
SE1**

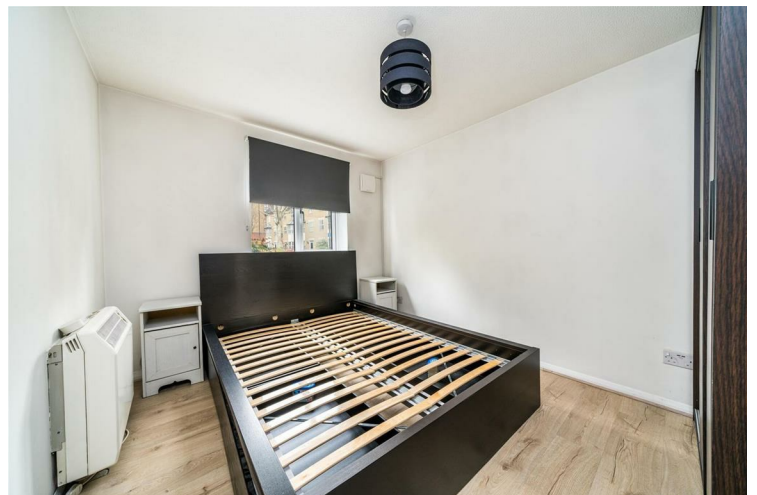
**£2,200 PCM**

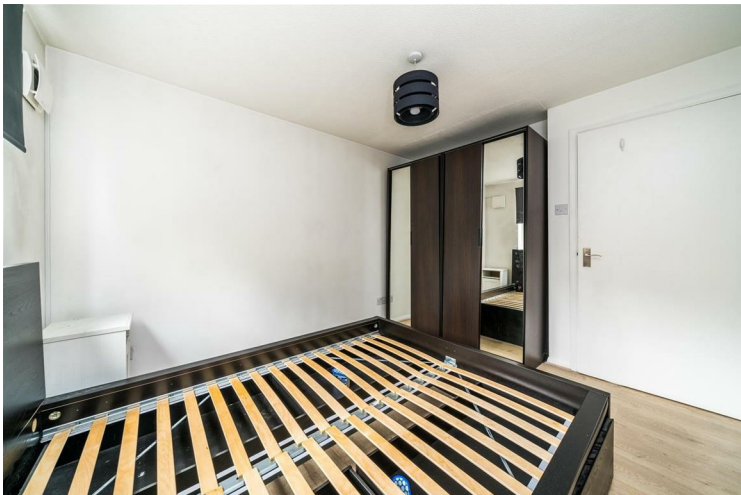
Stunning two bedroom ground floor flat with direct access to a communal garden situated minutes from Elephant & Castle tube station. Presented in immaculate condition, two doubles, large living room, separate modern kitchen and a newly refurbished bathroom.

Call the lettings department to reserve a viewing 0207 015 1360.




- Two Double Bedrooms • Furnished • Ground Floor • Communal Garden • Superb Location • Private Parking • Available August







Energy Efficiency Rating		
	Current	Potential
<i>Very energy efficient - lower running costs</i>		
(92 plus) <b>A</b>		
(81-91) <b>B</b>		
(69-80) <b>C</b>		
(55-68) <b>D</b>		
(39-54) <b>E</b>		
(21-38) <b>F</b>		
(1-20) <b>G</b>		
<i>Not energy efficient - higher running costs</i>		
<b>England &amp; Wales</b>	EU Directive 2002/91/EC 	

Agents Note: Whilst every care has been taken to prepare these particulars, they are for guidance purposes only. All measurements are approximate and are for general guidance purposes only and whilst every care has been taken to ensure their accuracy, they should not be relied upon and potential buyers/tenants are advised to recheck the measurements

Borough Lettings  
230 Borough High Street  
London  
SE1 1JX

020 7015 1360  
enquiries@leonardleese.com  
www.leonardleese.com

