



A GOLDSTONE PRIVATE SALE

# Celeste House

*A two-bedroom apartment in Beaufort Park, Colindale*

---

£435,000

LEASEHOLD · 2 BEDROOMS · 2 BATHROOMS · 799 SQ FT

## THE RESIDENCE

# Celeste House, NW9



Goldstone is delighted to present this bright and beautifully presented two-bedroom, two-bathroom apartment, occupying a ground-floor position within Celeste House, part of the sought-after Beaufort Park development in Colindale. Arranged over approximately 799 sq ft with a generous open-plan living space, a private balcony and two double bedrooms, the apartment is offered with excellent on-site amenities and fast Northern line links into central London.

OVERVIEW

# A bright and elegant home

*The apartment opens into a generous open-plan living, dining and kitchen area of 23 feet, filled with natural light and opening directly onto a private balcony.*

BEDROOMS

2

BATHROOMS

2

INTERIOR

799 sq ft

TENURE

Leasehold

A full range of integrated appliances, sleek handleless cabinetry and a contemporary tiled splashback feature in the kitchen, while engineered wood flooring runs through the living area. Both bedrooms are well-proportioned and benefit from fitted wardrobes, served by two contemporary bath/shower rooms, with a separate utility room.



Open-plan living and dining area



Kitchen with integrated appliances

INTERIORS

# Gallery

A selection of interior views from across the apartment.



Principal bedroom with fitted wardrobe



Second double bedroom



Main bathroom with bath



Separate shower room

## AT A GLANCE

## Key features

- Two-bedroom, two-bathroom ground-floor apartment
- Approx. 799 sq ft / 74.25 sq m internal area
- Private balcony off the open-plan living area
- Generous open-plan living, dining and kitchen (approx. 23')
- Two well-proportioned double bedrooms
- Main bathroom with bath plus a separate shower room
- Separate utility room
- Floor-to-ceiling windows and excellent natural light
- Modern fitted kitchen with integrated appliances
- Within the popular Beaufort Park development
- Approx. 8-minute walk to Colindale (Northern line, Zone 4)
- Residents' gym, pool, spa and 24-hour estate management

## THE DEVELOPMENT

## Life at Beaufort Park

Celeste House forms part of Beaufort Park, one of North West London's most successful modern developments, built by St George and set among landscaped gardens and tree-lined avenues. Residents enjoy extensive on-site amenities including 24-hour estate management, a residents' gym with swimming pool, spa and jacuzzi, along with cafés, restaurants and a local supermarket. Colindale Underground station (Northern line, Zone 4) is approximately an 8-minute walk, reaching King's Cross St Pancras in around 20 minutes, with the A5, A41 and M1 providing quick road links and Brent Cross close by.

ACCOMMODATION

# The apartment

OPEN-PLAN LIVING, DINING & KITCHEN

A generous open-plan reception of approximately 23' x 14'3" (7.00m x 4.31m) with floor-to-ceiling windows and doors opening directly onto the private balcony. The kitchen is finished with handleless cabinetry, a tiled splashback and integrated appliances.

PRINCIPAL BEDROOM

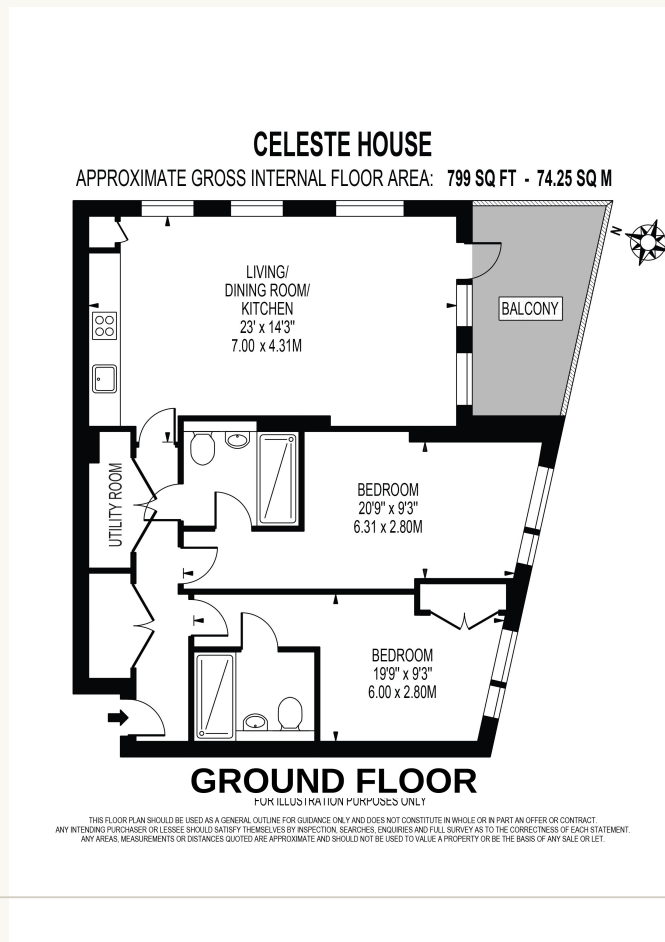
A well-proportioned double bedroom of approximately 20'9" x 9'3" (6.31m x 2.80m) with a fitted wardrobe and quality carpet.

SECOND BEDROOM

A second double bedroom of approximately 19'9" x 9'3" (6.00m x 2.80m), with fitted wardrobe – ideal as a guest room or home office.

BATHROOMS & UTILITY

A fully tiled main bathroom with bath and overhead shower, plus a separate shower room, both with contemporary fittings, and a separate utility room.



PRACTICAL

# The essentials

|                        |                          |
|------------------------|--------------------------|
| <b>Tenure</b>          | Leasehold                |
| <b>Interior</b>        | 799 sq ft / 74.25 sq m   |
| <b>Bedrooms</b>        | 2                        |
| <b>Bathrooms</b>       | 2                        |
| <b>Outdoor</b>         | Private balcony          |
| <b>Local authority</b> | London Borough of Barnet |
| <b>Council tax</b>     | Available on request     |
| <b>EPC</b>             | Available on request     |
| <b>Price</b>           | £435,000                 |

OUTDOOR

## Private balcony



Living area opening onto the private balcony



#### A GOLDSTONE PRIVATE SALE

## We would be delighted to tell you more

To arrange a private viewing of Celeste House, please contact Goldstone Global Ltd at the details below.

#### GOLDSTONE GLOBAL LTD

**Contact** Matthiew Meng

**Telephone** 07864 314 020

**Email** [matthiew.meng@thegoldstone.co.uk](mailto:matthiew.meng@thegoldstone.co.uk)

**Office** Floor 6, 29-30 Cornhill, City of London, EC3V 3ND, UK

These particulars are prepared as a general guide. They do not constitute, nor form part of, any offer or contract. Areas, measurements and distances are approximate. Photographs, plans and descriptions are for illustration only. Prospective purchasers are advised to verify all matters before committing to a transaction.

---