



3 Beds, Semi-Detached, Freehold, £199,950

Woodland Road, Beddau

Three Estate Agents Talbot Green are delighted to present to the market this extended three-bedroom semi-detached property, ideally situated in the sought-after location of Beddau.

Features

- THREE BEDROOMS
- EXTENDED
- LOUNGE/DINER
- MEDIA WALL
- OFF ROAD PARKING
- CLOSE TO LOCAL AMENITIES

Three Estate Agents Talbot Green are delighted to present to the market this extended three-bedroom semi-detached property, ideally situated in the sought-after location of Beddau.

The property briefly comprises an entrance porch leading into a spacious lounge/diner with carpeted flooring throughout. The lounge area benefits from a modern media wall and open-plan layout, while the dining area enjoys patio doors opening directly onto the rear garden, creating an ideal space for both relaxing and entertaining.

The kitchen is fitted with ample base and wall units, ceramic tile-effect flooring, tiled splashbacks, and an integrated oven, hob, and extractor fan.

To the first floor are three bedrooms, all with carpeted flooring. Bedrooms one and two are generous double rooms, while the third bedroom is a spacious single or small double.

Completing the accommodation is a modern family bathroom featuring a large corner walk-in shower, vanity unit with wash hand basin, and WC.

Attic area can be a 4th bedroom. Completely insulated with flooring. Just requires access and window if required.

Externally, the property boasts landscaped front and rear gardens including a resin pathway, patio seating area, lawn, off-road parking, and mature shrubs. The rear garden backs onto open fields and woodland, providing a pleasant outlook, and benefits from a desirable south-facing aspect, allowing for plenty of sunshine throughout the day.

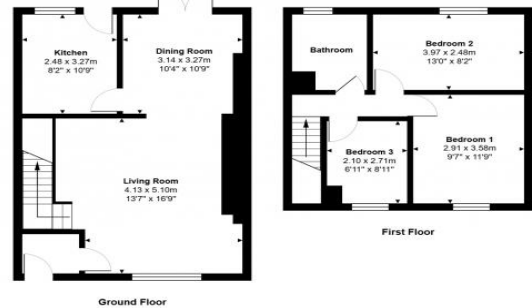
If you would be interested in viewing this well-presented home, please contact Three Estate Agents today to arrange a viewing at a time convenient for you.







13 Woodland Road, Beddau CF38 2DG



All measurements are approximate and for display purposes only