

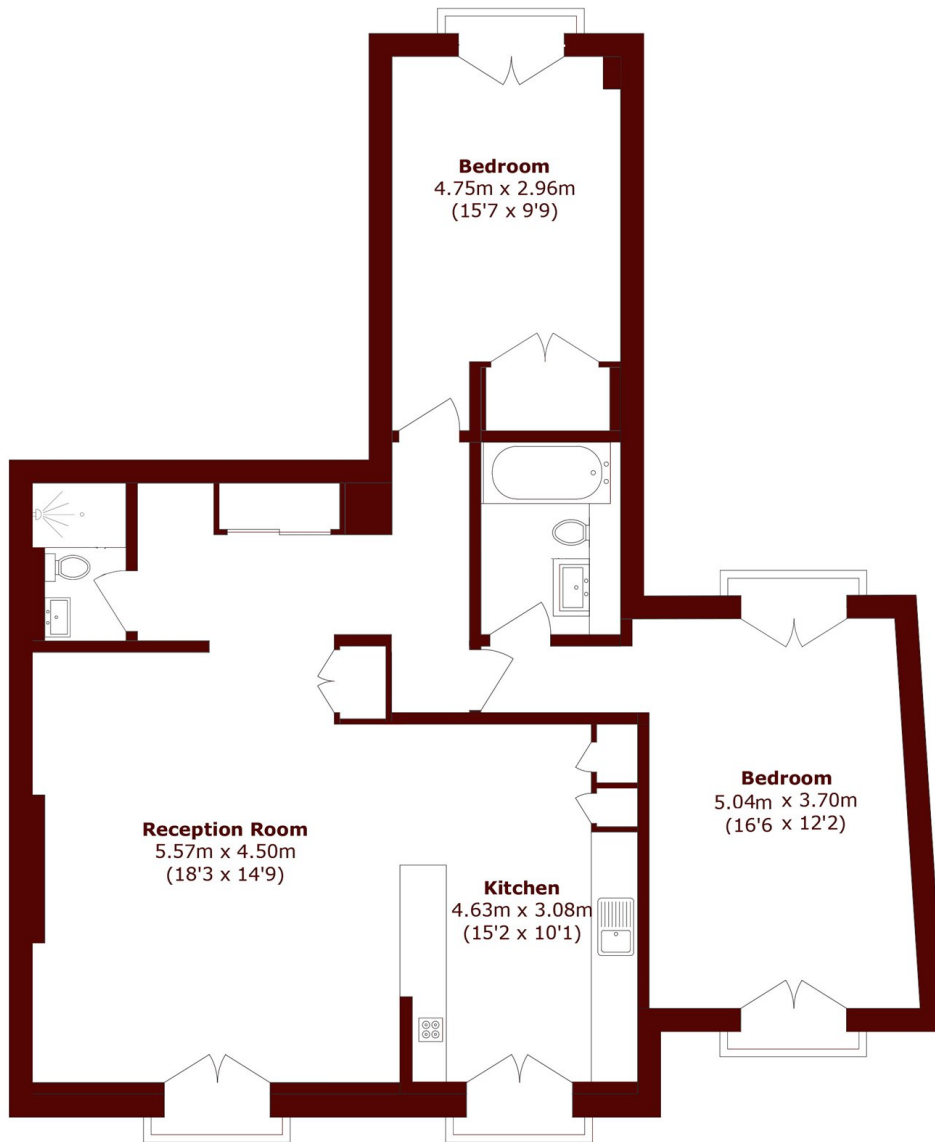


Kensington Gardens Square, W2

£1,100,000

 2  2  1  C

- Westbourne Grove Location
- Excellent Condition
- Communal Gardens
- Secure Car Parking
- Porter & Gym
- Lift



Third Floor

Total area (approx.): 95.5 sq. m (1027.9 sq. ft)

Marsh & Parsons Notting Hill

2-6 Kensington Park Road,
London, W11 3BU
020 7313 2890