

NEVIN & WELLS

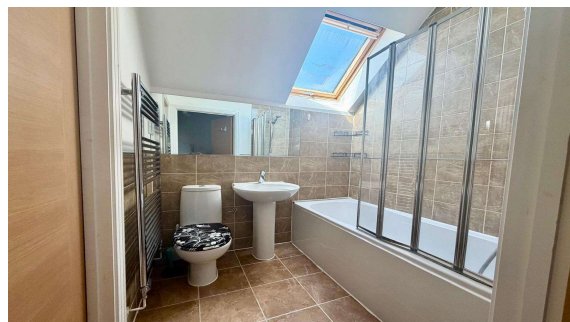
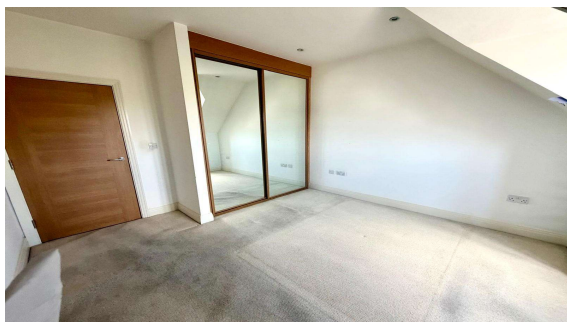
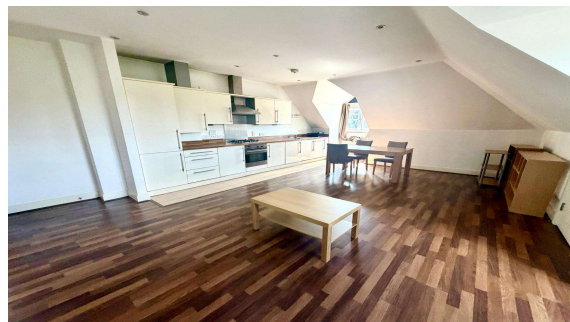
Residential

Established 2002



Manor Court, Staines, TW18 3HT

£225,000 L/H



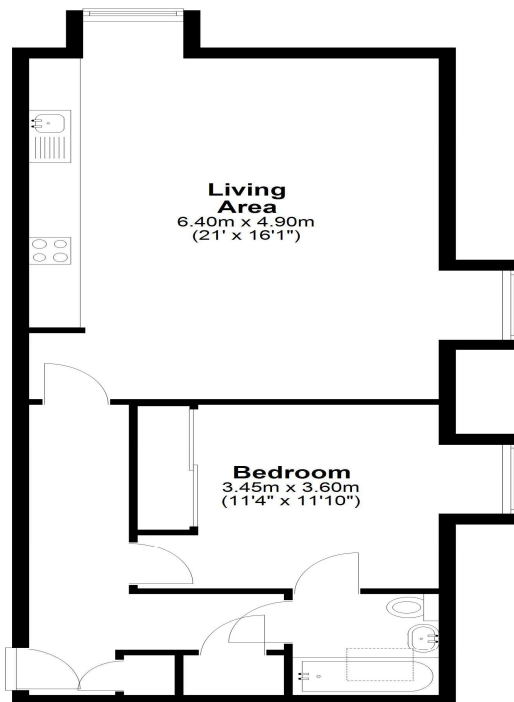
A very well presented top floor apartment with secure gated allocated parking. Built in 2006 by Messrs' Bonham Homes. The accommodation comprises entrance hallway, lounge/dining room, fitted kitchen, double bedroom, luxury bathroom, double glazed throughout, gas central heating and communal gardens. Situated near local shops and a short walk to Staines town centre. **No onward chain.**

Manor Court, Staines-upon-Thames, Middlesex, TW18 3HT

FLOOR PLAN

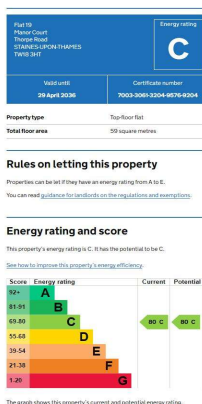
Second Floor

Approx. 61.4 sq. metres (661.3 sq. feet)



Total area: approx. 61.4 sq. metres (661.3 sq. feet)

EPC



COUNCIL TAX BAND:

C - Runnymede Borough Council

LEASE:

125 years from 2006 (awaiting written confirmation)

GROUND RENT:

£225 per annum (awaiting written confirmation)

SERVICE CHARGE:

£1250 per annum (awaiting written confirmation)

VIEWINGS:

By appointment with the clients selling agents,
Nevin & Wells Residential on 01784 437 437 or visit
www.nevinandwells.co.uk



All measurements are approximate. Nevin & Wells Residential have not tested any systems or appliances.