



Ommaney Road, SE14

£550,000

Tucked away on the desirable and tree-lined Ommaney Road in the heart of SE14, this beautifully presented two-bedroom lower garden flat offers a perfect blend of period charm and modern comfort. This lower-floor flat forms part of a well-maintained Victorian conversion and benefits from a private entrance. There is direct access to a sunny shared garden, which offers an ideal retreat. This home offers approximately 670 Sq Ft of living space as well as separate kitchen and reception room and two double bedrooms.

Ommaney Road is a quiet, tree-lined residential street ideally situated between New Cross and New Cross Gate stations, offering excellent transport links via the London

Features

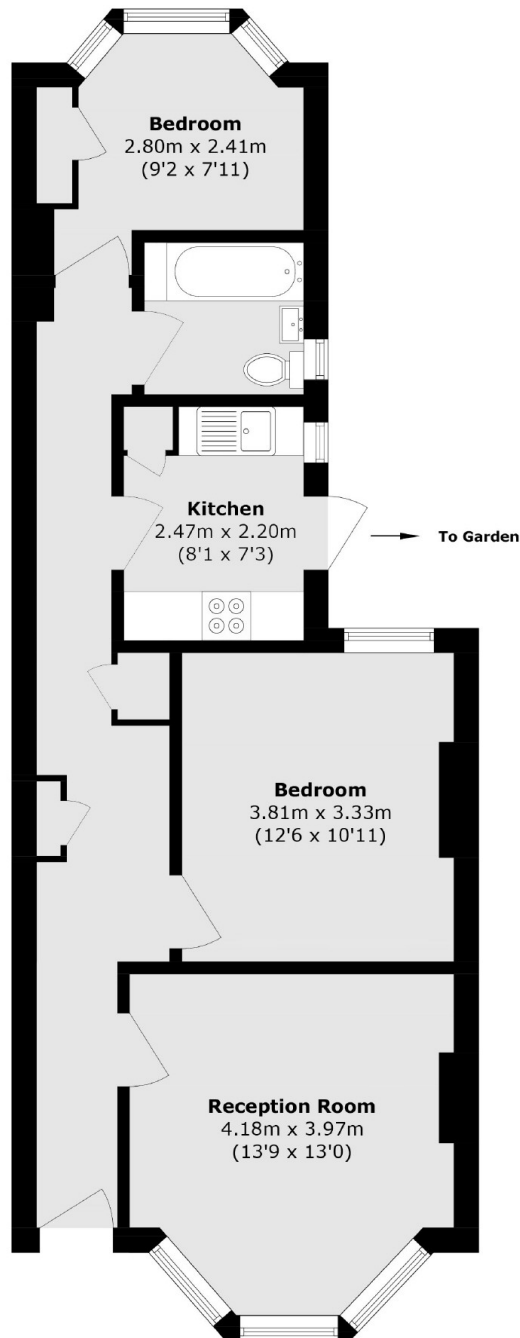
- Two Bedrooms
- Garden Access
- Telegraph Hill Conservation Area
- Close To Transport
- Quiet Tree Lined Street
- Victorian Conversion



Ommaney Road, SE14



Ommaney Road,
London, SE14



Total area (approx.): 62.2 sq. m (669.5 sq. ft)