

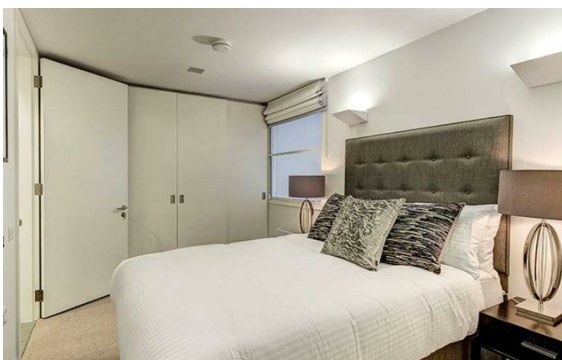


Fulham Road, South Kensington, London, SW3

Rent £1,300 Per Month

2 Bed | 2 Bath | 1 Reception

Please call us on 020 7724 2233 or email us info@newingtonstates.com to book a viewing.



Newington Estates are delighted to present you this stunning two double bedroom apartment in a private portered building with lift service located in the heart of South Kensington. The apartment comprises a fantastic 21ft reception area perfect for entertaining, leading to an open plan modern kitchen with fully integrated Neff appliances and stone work tops. Floor to ceiling windows across one side of the reception room bring a wonderful sense of space to the room and fill the property with an abundance of natural light.

Both double bedrooms offer ample storage space, with the master bedroom suite comprising of an en-suite bathroom with a raindrop shower and automatic sensor lighting. The family bathroom features a raindrop shower over the bath, with automatic lighting.

Energy Efficiency Rating:

Agents Note: Whilst every care has been taken to prepare these particulars, they are for guidance purposes only. All measurements are approximate and are for general guidance purposes only and whilst every care has been taken to ensure their accuracy, they should not be relied upon and potential buyers/tenants are advised to recheck the measurements.

NEWINGTON
— ESTATES —

60 Upper Montagu Street

London

W1H 1SN

020 7724 2233

info@newingtonestates.com

<http://www.newingtonestates.com>