



7 Pottery Court, Rye
£475,000





7 Pottery Court

CHAIN FREE, three bedroom townhouse in gated riverside development with tandem garage, large balcony from lounge/diner, river views, moments from the town centre, en-suite bathroom, utility room.

Council Tax band: E

Tenure: Freehold

EPC Energy Efficiency Rating: C

EPC Environmental Impact Rating:

- Gated Riverside Location
- Beautiful Views over the River Tillingham
- Moments Walk into the Town Centre
- Chain Free
- Three Bedrooms
- Tandem Double Garage
- Large Terrace from Lounge/Diner
- Utility Room
- En-Suite Bathroom from Bedroom One
- Additional Balcony from Bedroom One











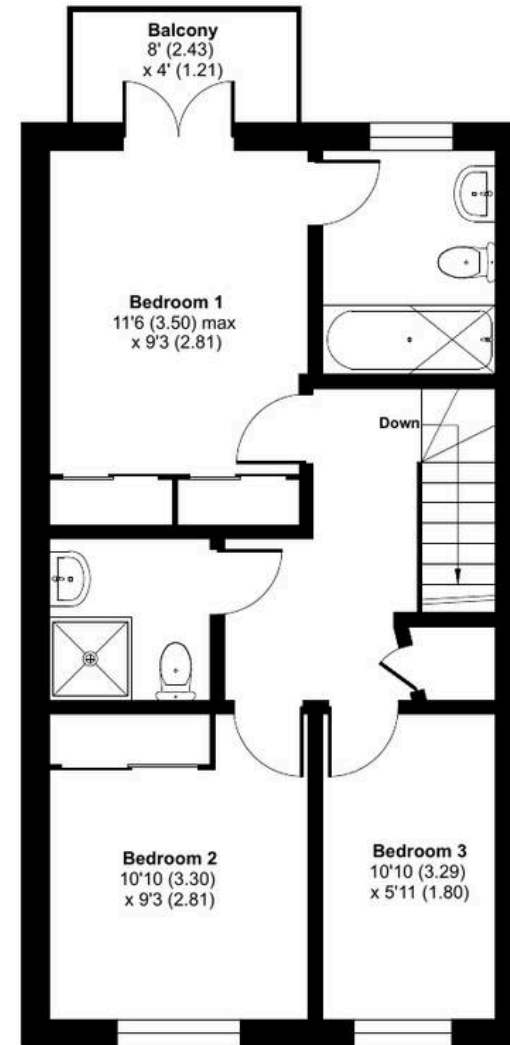
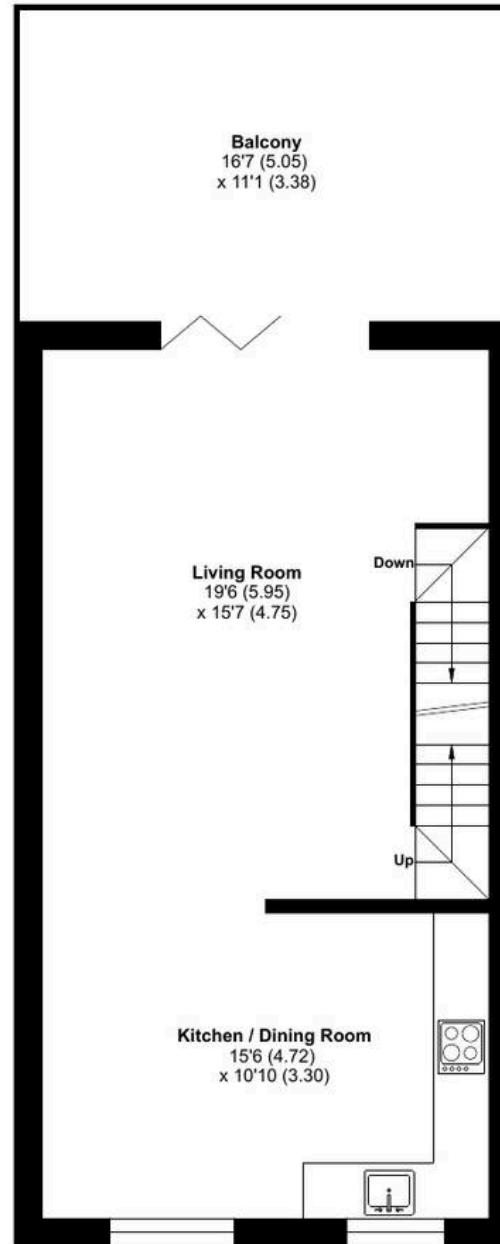
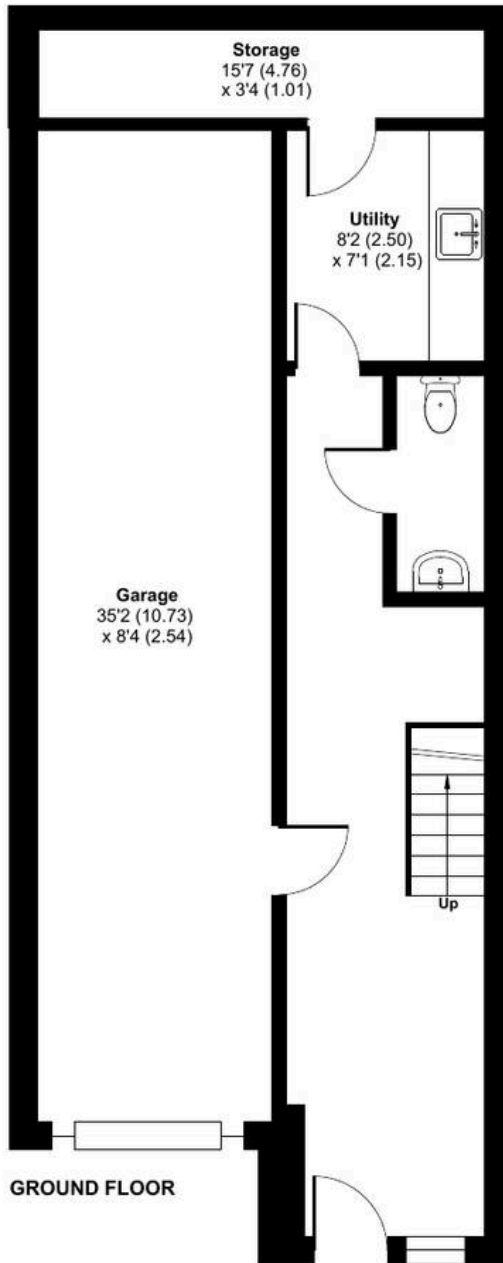
Pottery Court, Rye, TN31

Approximate Area = 1314 sq ft / 122 sq m

Garage = 293 sq ft / 27.2 sq m

Total = 1607 sq ft / 149.2 sq m

For identification only - Not to scale



Floor plan produced in accordance with RICS Property Measurement 2nd Edition, Incorporating International Property Measurement Standards (IPMS2 Residential). © nichecom 2026. Produced for Nested. REF: 1451064





Nested Rye

01797 903045 • barnaby.osborne@nested.com • nested.com/barnaby-osborne

