

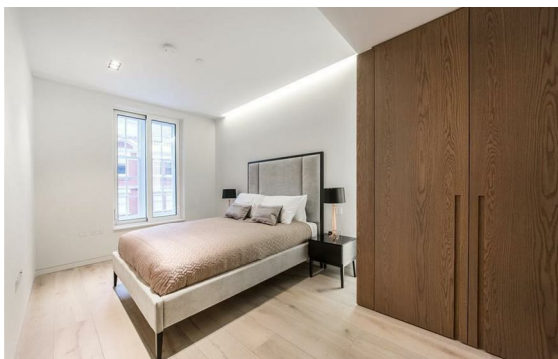


Baker Street, Marylebone, London, NW1

Rent £1,575 Per Month

2 Bed | 2 Bath | 1 Reception

Please call us on 020 7724 2233 or email us info@newingtonstates.com to book a viewing.



A beautifully presented two-bedroom apartment offering bright, well-balanced living space in a prime Marylebone location. The property features a spacious reception room leading into a sleek, modern kitchen with integrated appliances. Both double bedrooms are generously proportioned and benefit from fitted wardrobes, while a stylish bathroom and separate shower room provide added convenience.

Ideally located in Marylebone, just moments from Baker Street Station and close to Regent's Park. A wide range of shops, cafés, and attractions, including Madame Tussauds, are all within easy reach.

EPC rating: D

Energy Efficiency Rating: D

Agents Note: Whilst every care has been taken to prepare these particulars, they are for guidance purposes only. All measurements are approximate and are for general guidance purposes only and whilst every care has been taken to ensure their accuracy, they should not be relied upon and potential buyers/tenants are advised to recheck the measurements.

NEWINGTON
— ESTATES —

60 Upper Montagu Street

London

W1H 1SN

020 7724 2233

info@newingtonstates.com

<http://www.newingtonstates.com>