



LISA CAVANAGH-SMITH

expTM



Alton Barnes, Marlborough, Wiltshire, SN8 4LB
Offers over £490,000

3 1 2



- A quintessential, historic Grade II listed thatched cottage
- Sitting room with inglenook fireplace, exposed beams and underfloor heating
- Tom Howley designer kitchen (appliances by separate negotiation)
- Upstairs-two double bedrooms plus a dressing room/study/nursery
- Delightful walled cottage garden with fruit trees and pond
- Integrated double garage which could be converted into an annex or further accommodation STPP
- Spectacular direct views of the White Horse and wonderful countryside walks and cycle paths
- Excellent transport links to London, Paddington within 1 hour.

A quintessential, beautifully modernised, Grade II listed thatched cottage, dating back to the 1700s, set within the picturesque village of Alton Barnes in the heart of the Vale of Pewsey. Rich in historic charm and character, this exceptional freehold home enjoys views towards the famous Alton Barnes White Horse and offers the perfect blend of period features and contemporary upgrades.

The current owners have significantly improved the property throughout, including a new thatched roof, boiler, new flooring with underfloor heating to the ground floor, a beautifully designed Tom Howley re-fitted kitchen (kitchen appliances can be included by separate negotiation) and a stylish new bathroom suite complete with separate shower cubicle. Original features such as exposed beams, an impressive inglenook fireplace with wood burner, deep-set windows with shutters and original elm wood floorboards create the warm and characterful atmosphere throughout the property.

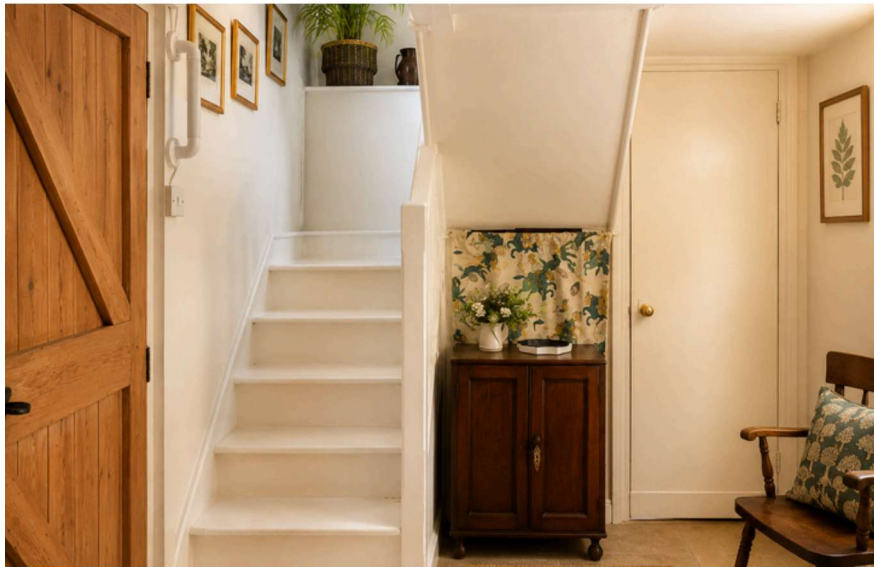
The accommodation comprises an entrance hall, a spacious sitting room with inglenook fireplace and exposed wooden beams, kitchen, bathroom suite with separate shower cubicle and a versatile dining room which could also serve as a third bedroom. Upstairs, there are two double bedrooms of which the delightful principal bedroom leading to a separate dressing room/study/nursery complete with a sink, also offering potential for the new owners to create an en-suite bathroom STPP.



Outside, the property offers beautifully maintained mature private gardens complete with fruit trees (cherry, pear and plum) and patio areas with pond which wrap around the cottage. There is also off-street parking and a substantial double garage with a pitched roof, ideal for storage, a workshop or possible conversion into an annex or additional living accommodation STPP.

Located within the North Wessex Downs National Landscape, the property is moments from the historic Saxon church of St Mary the Virgin and surrounded by beautiful countryside walks.

This is a rare opportunity to acquire a truly special period cottage in one of Wiltshire's most desirable and unspoilt villages.





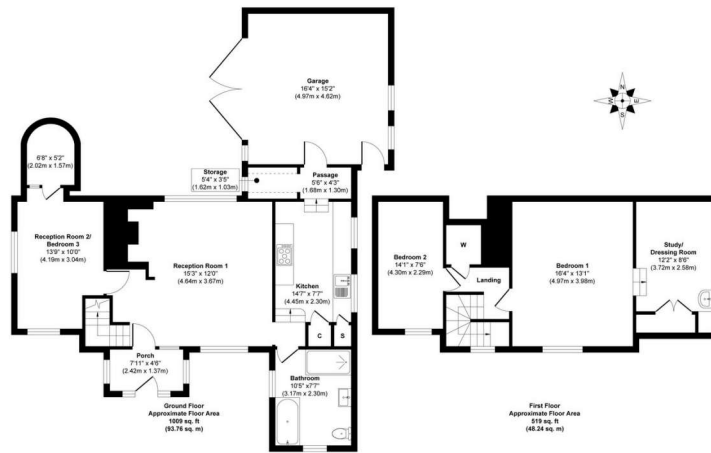


SITUATION

Marlborough is a historic market town which provides an excellent range of shopping including Waitrose and high street luxury retail shops as well as a twice weekly market. The town also offers a good choice of restaurants to suit a range of palates. The area is well served with good leisure facilities and excellent schools including St John's Academy, Marlborough College, Dauntsey's, and St. Francis. There are main line stations to London, Paddington (journey time 50 minutes to 1 hour), and the Southwest at Pewsey, Great Bedwyn (both about 5 miles away) and Hungerford (about 10 miles away).

The major commercial centres of Swindon, Andover and Newbury plus the M4, A303, and M3 are within easy reach. The countryside surrounding the town is designated as an Area of Outstanding Natural Beauty and includes the nearby Savernake Forest and the National Cycle Path.

Disclaimer: Please note that some of the images have been enhanced with the use of AI so an in-person viewing is essential.



Approx. Gross Internal Floor Area 1528 sq. ft / 142.00 sq. m

Whilst every attempt has been made to ensure the accuracy of the floor plan contained here, measurements of doors, windows, rooms and any other items are approximate and no responsibility is taken for any error, omission, or mis-statement. The measurements should not be relied upon for valuation, transaction and/or funding purposes. This plan is for illustrative purposes only and should be used as such by any prospective purchaser or tenant.

If there are any queries in relation to these property particulars, please contact this office to check the information. No responsibility can be accepted for any expenses incurred by intending purchasers in inspecting properties which have been sold, let or withdrawn. eXp World UK Limited and the vendors of this property give notice that:

- 1) The sales particulars are intended to provide accurate and reliable information regarding the property for the guidance of intending purchasers. Whilst all descriptions, reference to condition, dimensions, areas, and measurements are believed to be accurate any intending purchasers should not rely on them as statements of fact and must satisfy themselves by inspection as to their correctness.
- 2) The particulars do not constitute part of an offer or contract with prospective purchasers.
- 3) All curtains, carpets, blinds equipment, light fittings and fixtures are deemed to be removable by the Vendor unless specifically negotiated with the sale of the property.
- 4) No person connected with eXp World UK Limited has any authority to make or give representation or warranty whatsoever in relation to this property on behalf of eXp World UK Limited nor enter into any contract on behalf of the vendor.
- 5) We offer a wide range of services through third party providers including solicitors, mortgage providers, EPC suppliers and other contractors. You are under no obligation to use these services and it is Your discretion whether You choose to deal with these providers or use Your own preferred supplier.



+44 (0)7831 787787



lisa.cavanagh-smith@expuk.com



<https://lisacavanaghsmith.expuk.com>