



Pinkmove

Schooner Circle

Guide Price £230,000 to £240,000

- Landscaped Rear Garden with Artificial Lawn
- Parking for Two Vehicles
- EV Charging Point with 11.5kw Battery Storage
- PVC Decking with Covered Patio Area
- Convenient Downstairs WC
- Approximately 1 Mile from Tredegar House



2 2 1

Pinkmove

01633 746088
team@pinkmove.co.uk



About the property

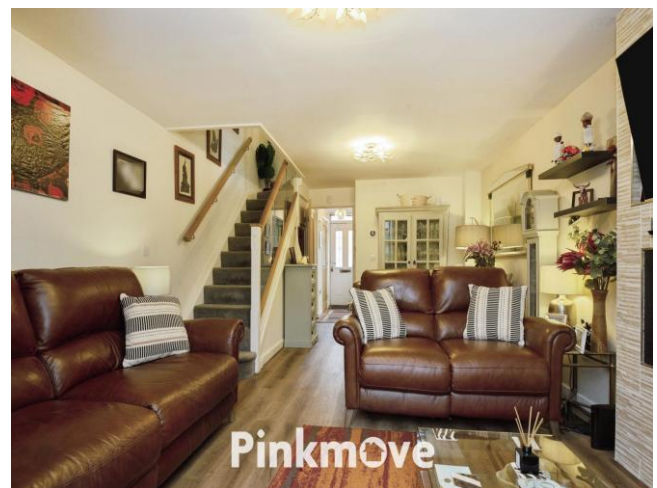
This immaculately presented two-bedroom semi-detached home is set in the sought-after area of Coedkernew, just outside Newport City Centre. It offers excellent transport links for commuters to Cardiff, Bristol or London, with the train station a short drive away and easy access to the M4 via junction 28. The property is close to local amenities including the Asda Superstore and sits currently within the catchment areas for John Frost and St Joseph's secondary schools. Pubs, restaurants and the beautiful Tredegar House and Park are also nearby, making this a fantastic family location.

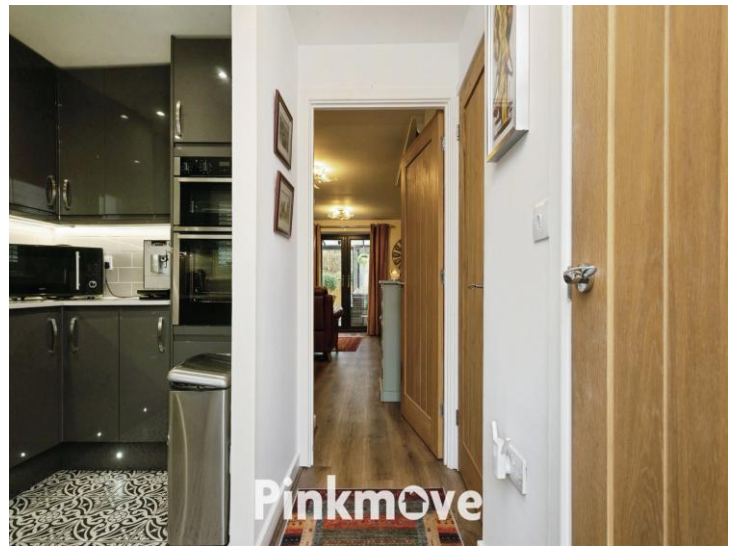
Inside, the entrance hall features a convenient W/C and leads through to a modern kitchen equipped with Neff appliances, quartz worktops, a waste disposal unit, and Nest controls for the Baxi boiler.

The open-plan lounge features a contemporary media wall and fireplace, with patio doors opening onto a beautifully landscaped rear garden, which also benefits from additional side space which houses the shed.

Upstairs, glass balustrades and oak doors add a stylish finish. This floor features two double bedrooms, both with built in wardrobes, a modern family bathroom, and a master bedroom complete with its own en suite.

Parking for two vehicles is located at the rear of the property, along with an EV charger featuring 11.5kW battery storage. With its high-quality finish, excellent location and well-designed layout, this property is ideal for a wide range of buyers.





Accommodation

Kitchen

Living Room

Wc

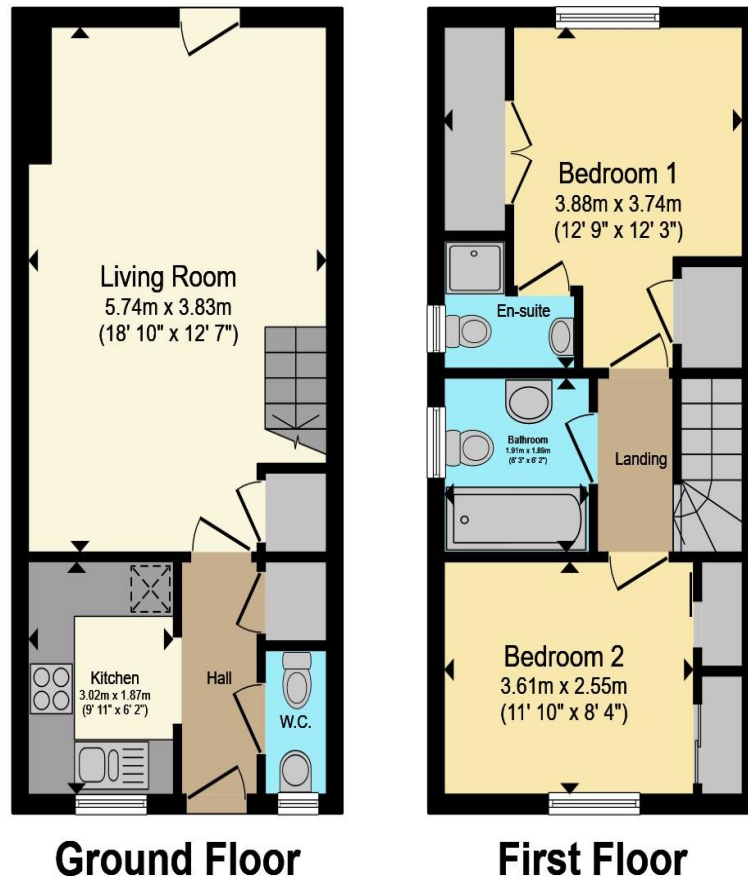
Bedroom 1

Bedroom 2

En-Suite

Bathroom

Floorplan



Total floor area 65.2 sq.m. (702 sq.ft.) approx

This floor plan is for illustrative purposes only. It is not drawn to scale. Any measurements, floor areas (including any total floor area), openings and orientation are approximate. No details are guaranteed, they cannot be relied upon for any purpose and they do not form part of any agreement. No liability is taken for any error, omission or misstatement. A party must rely upon its own inspection(s). Powered by www.focalagent.com



Important Information

Note while we endeavour to make our sales details accurate and reliable, if there is any point which is of particular interest to you, please contact the office and we will be pleased to confirm the position for you. We have not personally tested any apparatus, equipment, fixtures, fittings or services and cannot verify they are in working order or fit for their purposes. Nothing in these particulars is intended to indicate that carpets or curtains, furnishings or fittings, electrical goods (whether wired or not). Gas fires or light fittings or any other fixtures not expressly included form part of the property offered for sale. This computer generated Floorplan, if applicable, is intended as a general guide to the layout and design of the property. It is not to scale and should not be relied upon for dimensions. Tenure: We cannot confirm the tenure of the property as we have not had access to the legal documents. The buyer is advised to obtain verification from their solicitor or surveyor.

Peter Alan Limited is registered in England and Wales under company number 2073153. Registered Office is Cumbria House, 16-20 Hockliffe Street, Leighton Buzzard, Bedfordshire, LU7 1GN. VAT Registration Number is 500 2481 05. For activities relating to regulated mortgages and non-investment insurance contracts, Peter Alan Limited is an appointed representative of Connells Limited which is authorised and regulated by the Financial Conduct Authority. Connells Limited's Financial Services Register number is 302221. Most buy-to-let