

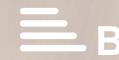


# RESIDE MANCHESTER



621 New Victoria Building 103 Corporation Street  
, Manchester, M4 4LG

**£2,385 Per Month**



## 621 New Victoria Building 103

Manchester, M4 4LG

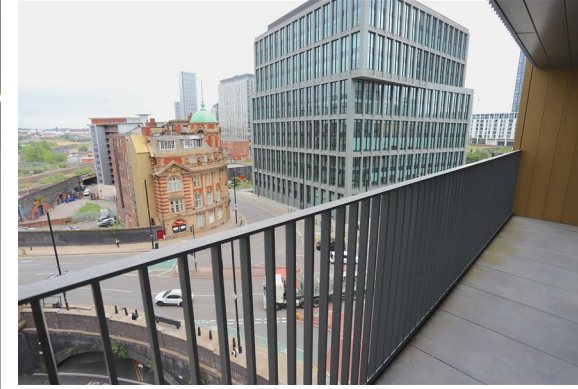
Welcome to New Vic, A collection of thoughtfully designed homes where considered interiors, exceptional service and vibrant community come together.

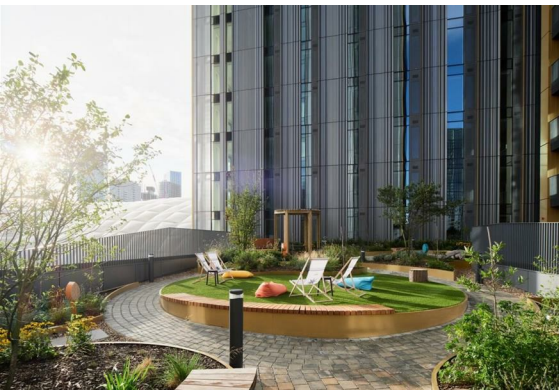
At New Vic, every detail has been carefully curated. From beautifully designed shared spaces that blend contemporary style with timeless, pre-loved pieces, to lush planting and warm, characterful interiors, it's a place created to feel effortlessly welcoming from the moment you arrive.

Our dedicated on-site team is available 24/7, ensuring everything runs seamlessly so you can make the most of every day. Whether you're unwinding in the piano lounge, catching a film in the cinema, enjoying the games room or focusing in our private meeting rooms and Zoom booths with ultra-fast broadband, every space has been designed to complement modern living. For those with wellness in mind, our fully equipped gym offers the latest fitness technology just moments from your front door.

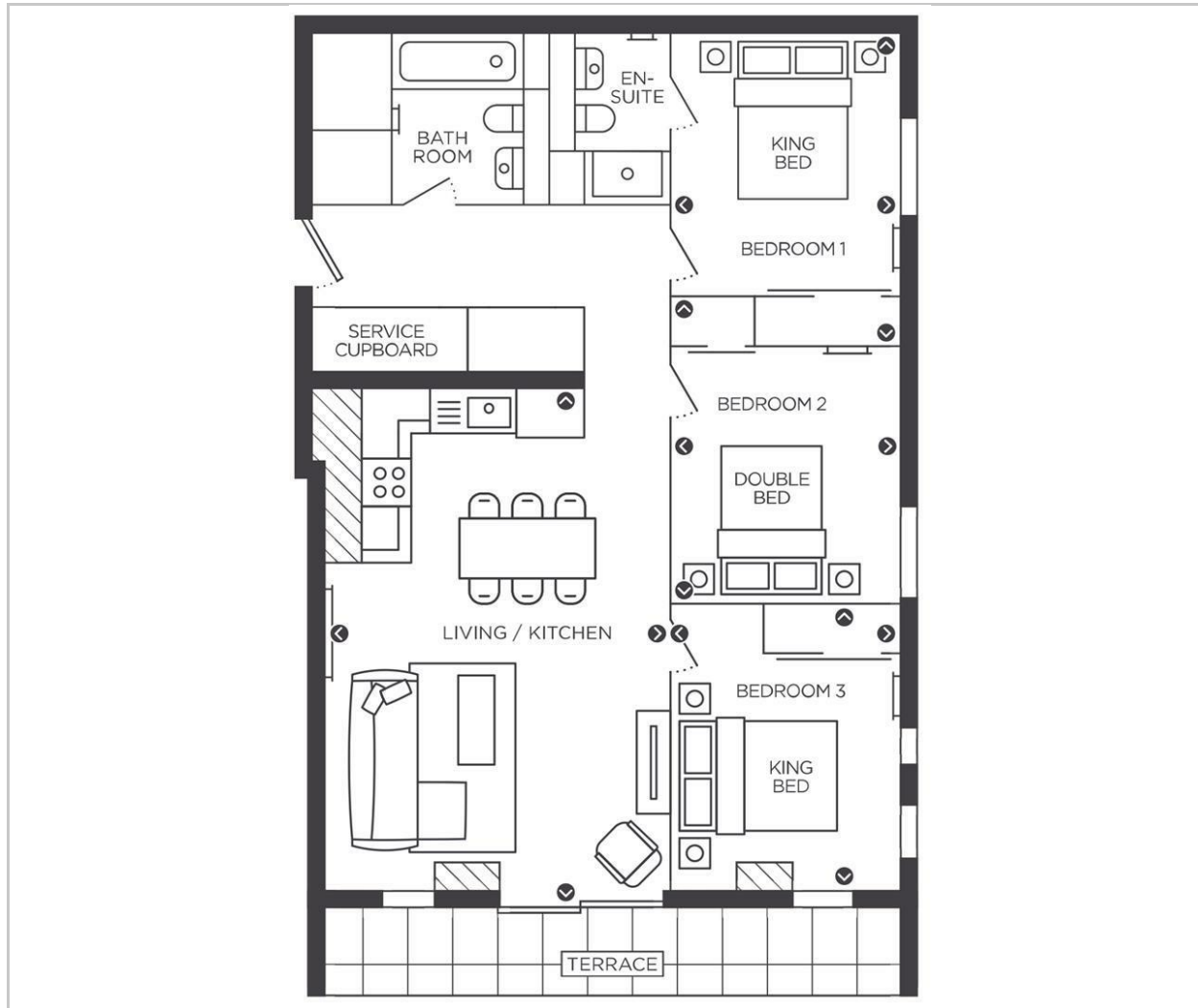
Book your viewing today and find your place at New Vic. In-person and virtual tours are available.

- Three Bedrooms, Two Bathrooms
- Furnished Throughout
- Spacious Balcony
- Parking Available for Additional £200pcm
- Available Immediately
- EPC Rating B
- Pet-Friendly
- 24/7 Concierge
- Spacious Residents Gym
- Incredible Onsite Amenities

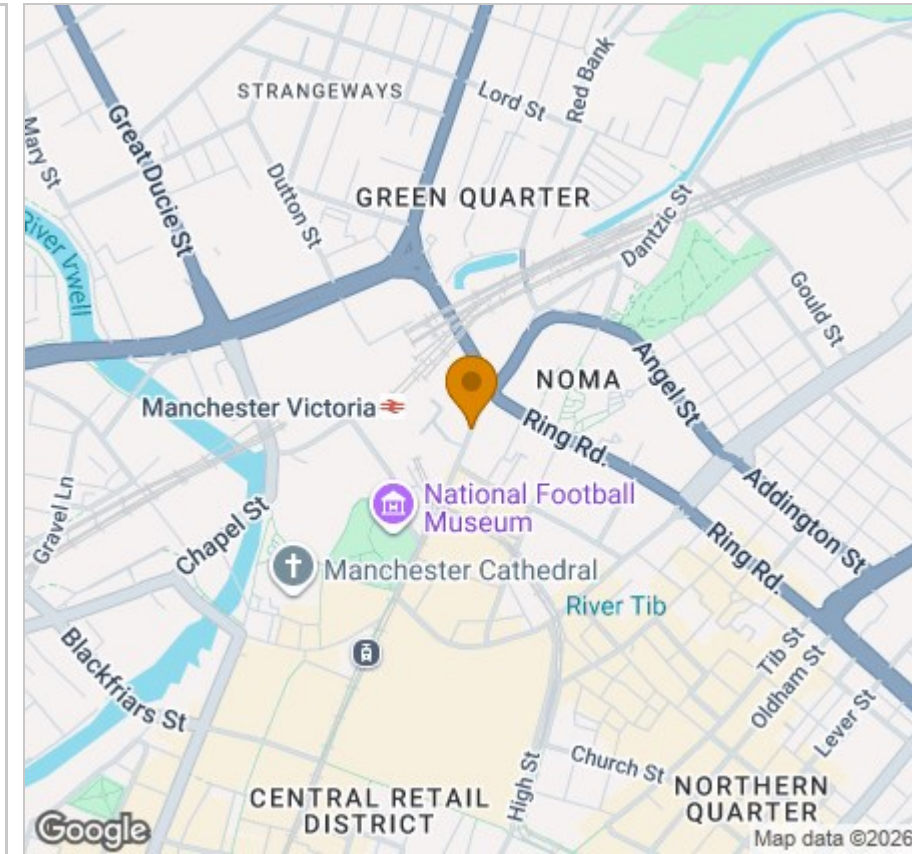




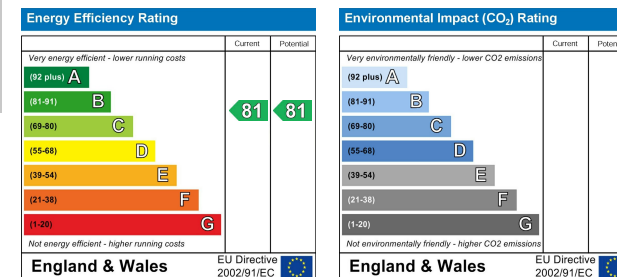
## Floor Plan



## Area Map



## Energy Efficiency Graph



## Viewing

Please contact our Reside Manchester Office on 0161 837 2840 if you wish to arrange a viewing appointment for this property or require further information.

These particulars, whilst believed to be accurate are set out as a general outline only for guidance and do not constitute any part of an offer or contract. Intending purchasers should not rely on them as statements of representation of fact, but must satisfy themselves by inspection or otherwise as to their accuracy. No person in this firm's employment has the authority to make or give any representation or warranty in respect of the property.

4 Jordan Street, Manchester, Greater Manchester, M15 4PY

Tel: 0161 837 2840 Email: [info@residemanchester.com](mailto:info@residemanchester.com) [www.reside-property.com](http://www.reside-property.com)