



6 Gainford Avenue, Gatley

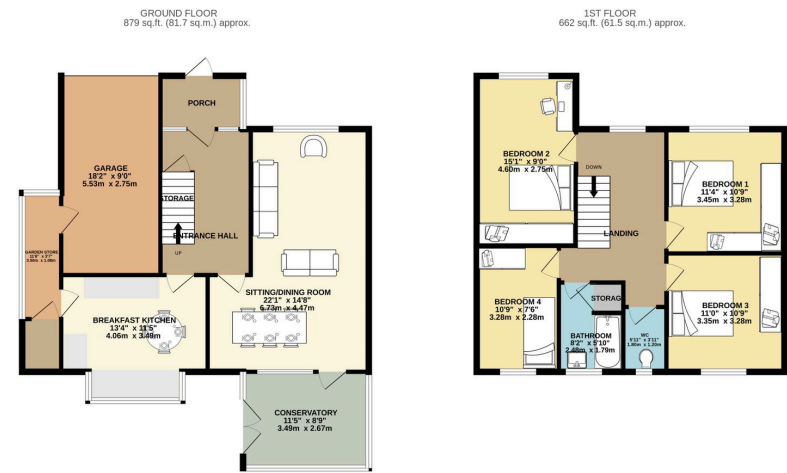
Guide Price £500,000

4 2 2

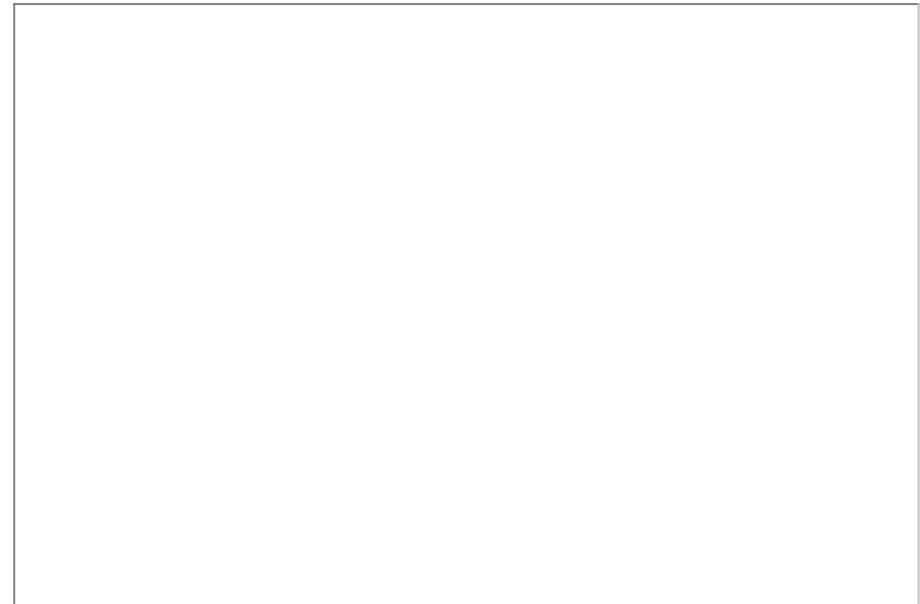
- Situated in a highly sought-after location with excellent access to local amenities
- Open Plan Reception Room & Conservatory, ideal for both everyday living and entertaining guests
- Entirely self-contained with separate W.C.
- Offered For Sale with No Onward Chain.
- Single garage and driveway providing convenient off-road parking.
- Spacious detached family home offering approximately 1,542 sq ft of versatile living space
- Bright and welcoming interiors with ample natural light throughout.
- Flexible layout suitable for a variety of living arrangements and lifestyle needs.
- Private, low-maintenance garden perfect for outdoor relaxation and al fresco dining.







TOTAL FLOOR AREA: 1542 sq.ft. (143.2 sq.m.) approx.
 Whilst every attempt has been made to ensure the accuracy of the floorplan contained herein, measurements of doors, windows, rooms and any other items are approximate and no responsibility is taken for any omission or mis-statement. This plan is for illustrative purposes only and should be used as such by any prospective purchaser. The services, systems and appliances shown have not been tested and no guarantee as to their operability or efficiency can be given.
 Made with Metropac (2004)



9 Gatley Road, Cheadle, Cheshire SK8 1LY Tel. 0161 428 1488 Fax. 0161 428 1479
 Email. mail@andrewdawson.co.uk