



Queens Gate

London, SW7

£5,000 per month
(£1,153.85 per week)

A fantastic two-bedroom, two-bathroom raised ground floor apartment in Queen's Gate, SW7, featuring high ceilings and original features. Spacious reception, separate dining room, and kitchen. Moments from Hyde Park, amenities and transport

CHESTERTONS



Queens Gate

London, SW7

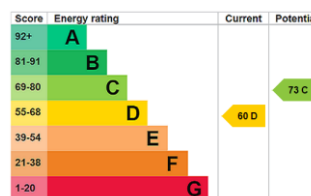
- Two Bedrooms
- Two Bathrooms
- High Ceilings



A fantastic two-bedroom, two-bathroom apartment situated on the raised ground floor of this attractive building in Queen's Gate, SW7. The apartment boasts high ceilings and original features throughout, and offers a spacious reception room, a separate dining room, and a well-appointed kitchen.

Queen's Gate is just a short walk from Hyde Park, with the excellent amenities of High Street Kensington and South Kensington close by, as well as superb public transport links.

Minimum Term: 12 months
Deposit Required: £6,923.08
Local Authority: Royal Borough of Kensington & Chelsea
Council Tax Band: H
EPC Rating: D
Furnished, Part Furnished



Chestertons Kensington Lettings

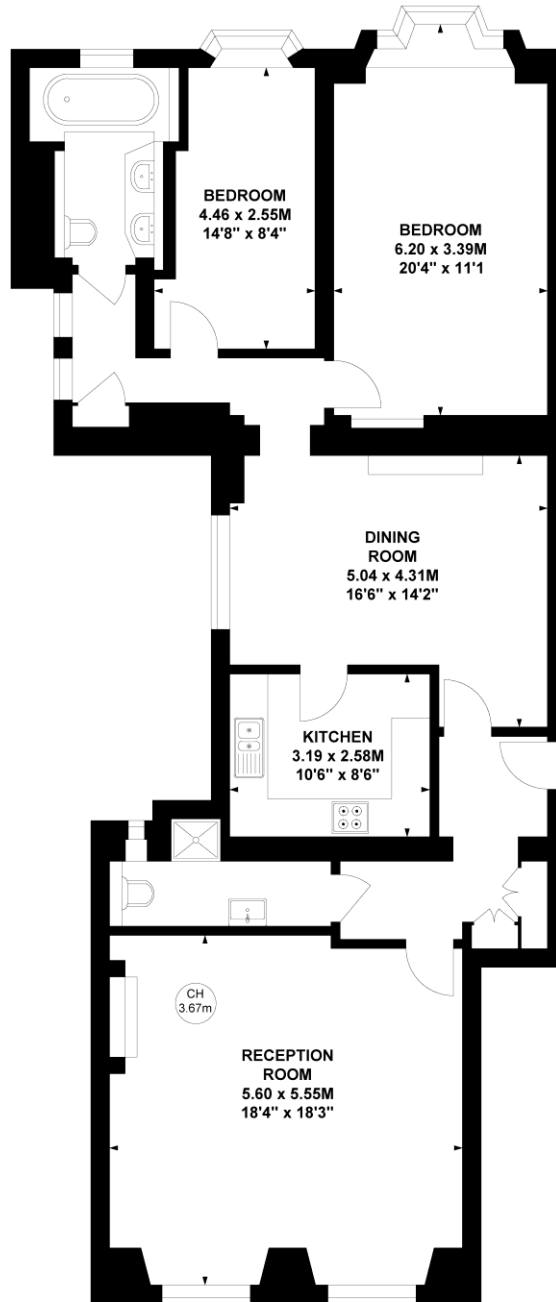
116 Kensington High Street
 Kensington
 London
 W8 7RW
 kensingtonlettingsusers@chestertons.co.uk
 02079377260
 chestertons.co.uk

Additional tenant charges apply (fees apply to non-AST tenancies only)
 Tenancy Agreement Fee: £300
 References per Tenant/Guarantor: £60
 Inventory check (approx. £100 – £250 inc. VAT)
 chestertons.co.uk/property-to-rent/applicable-fees

Queen's Gate, SW7

Approximate gross internal area
119.54 sq m / 1287 sq ft

Key :
CH - Ceiling Height



Raised Ground Floor

This plan is not to scale and must be used as layout guidance only. All measurements and areas are approximate and should not be relied upon to provide accurate information. This plan must not be relied upon when making property valuations, design considerations or any other such relevant decisions. We accept no responsibility or liability (whether in contract, tort or otherwise) in relation to any loss whatsoever arising from or in connection with any use of this plan or the adequacy, accuracy or completeness of it or any information within it.

