



Blackwall Way, London, E14 9GB

£2,400 Per Calendar Month





£2,400 Per Calendar Month

Blackwall Way

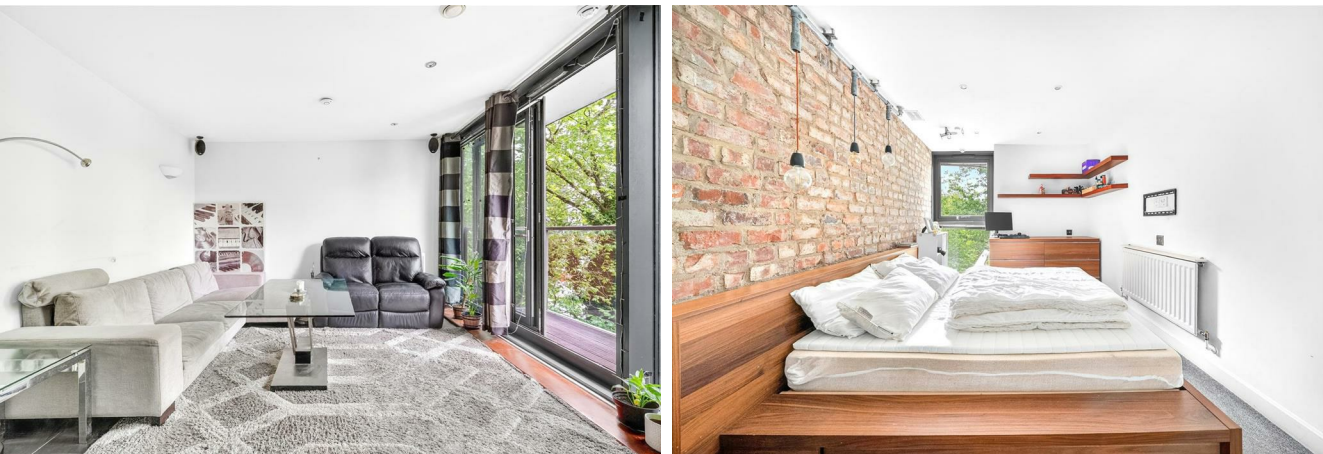
London, E14 9GB

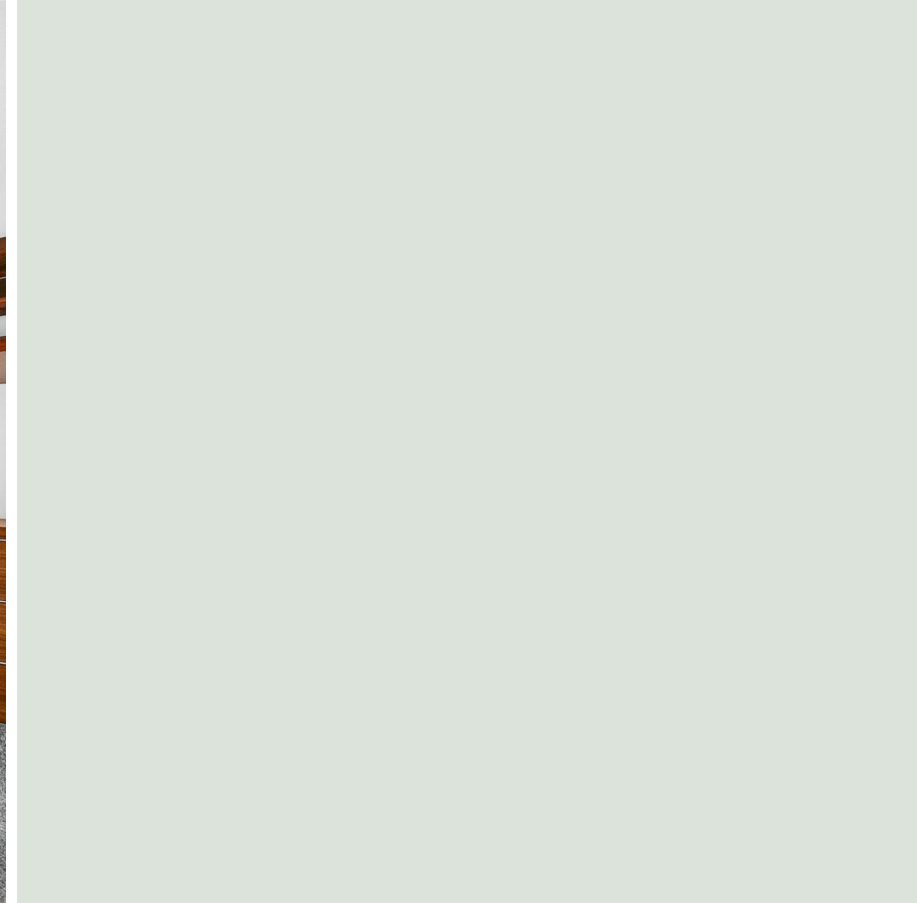
- Two Bedroom
- Second Floor
- Residents Gym
- Two Bathroom
- 24-Hour Concierge

A two bedroom, two bathroom apartment on the second floor of Elektron Tower. The property comprises open plan living area with balcony, family bathroom as well as an en-suite.,

The development benefits from concierge service as well as the use of a communal gym

The apartment is within walking distance of East India DLR Station and situated within easy access to Mile End underground and Westferry DLR.





Directions



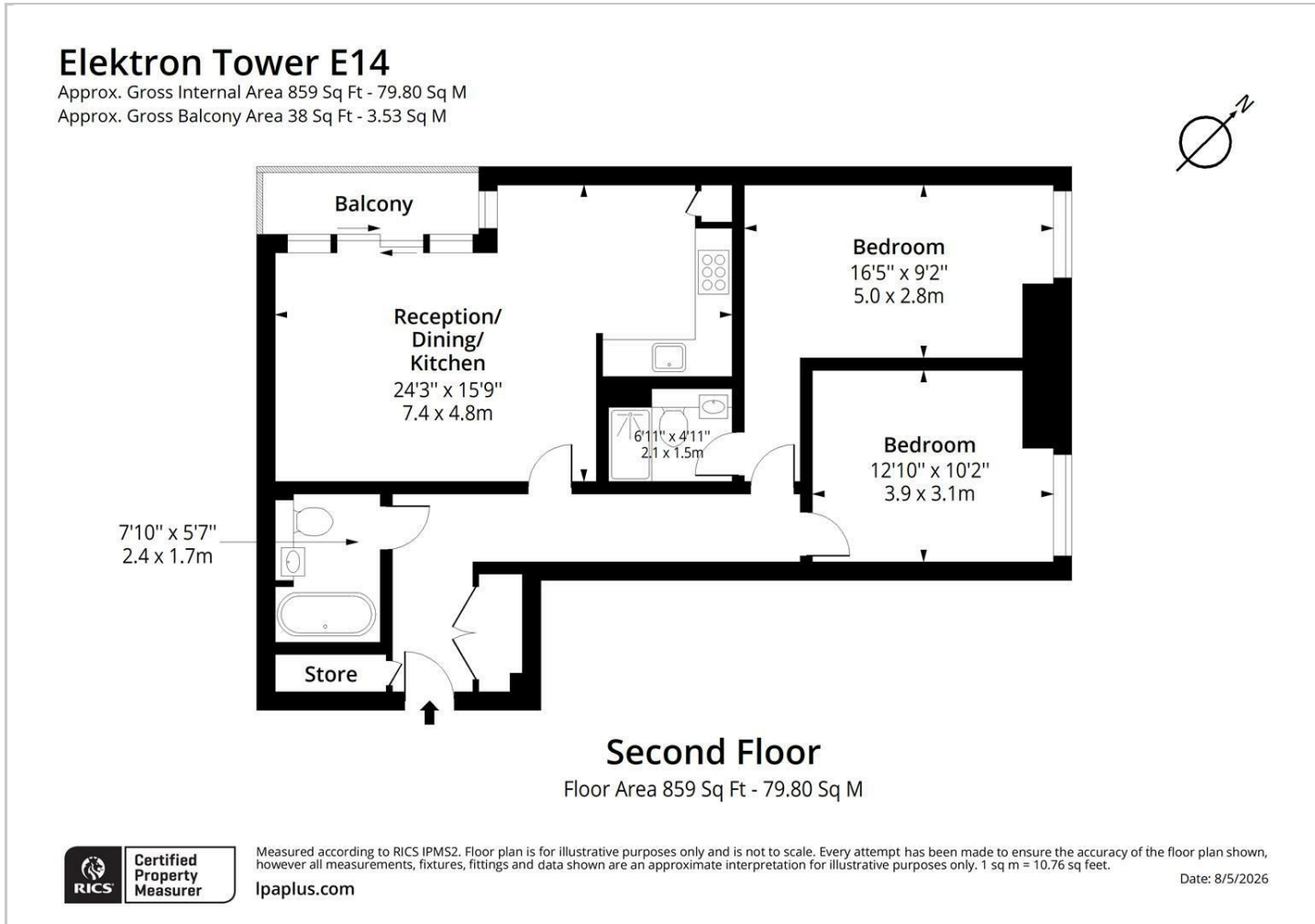


Headboard and pillows on the bed.

Black metal shelving unit with a white lampshade.

Wardrobe system with a light wood chest of drawers, a hanging rack with belts, and a vanity table with a mirror and various items.

Floor Plans



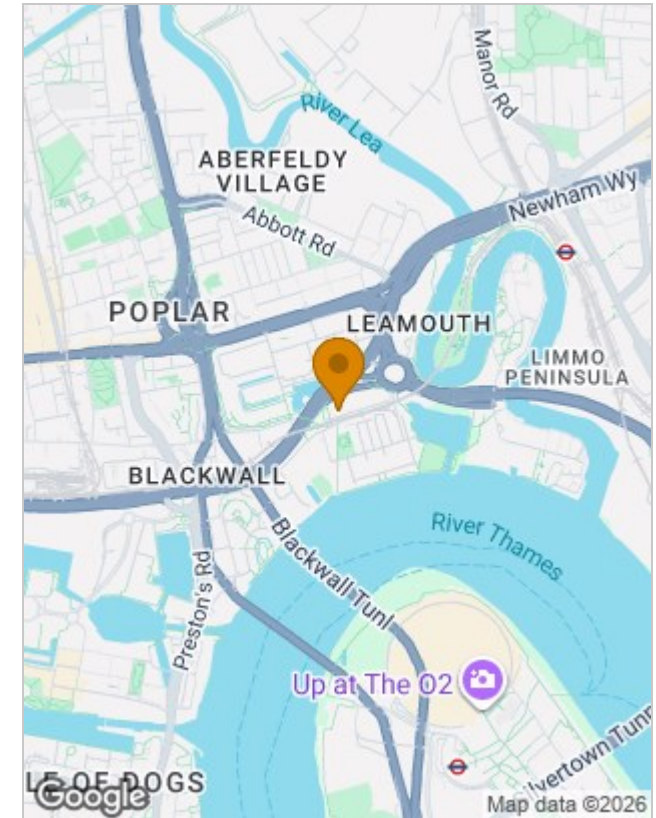
Viewing

Please contact our Redbridge Lettings Office on 020 8551 0211 if you wish to arrange a viewing appointment for this property or require further information.

The particulars are set out as a general outline only for the guidance of intended purchasers or lessees, and do not constitute, any part of a contract. Nothing in these particulars shall be deemed to be a statement that the property is in good structural condition or otherwise nor that any of the services, appliances, equipment or facilities are in good working order. Purchasers should satisfy themselves of this prior to purchasing.

10 Roding Lane South, Essex, IG4 5NX
 Tel: 020 8551 0211 Email: redbridge@sandradavidson.com <https://www.sandradavidson.com>

Location Map



Energy Performance Graph

