



**WETHERELL**  
MAYFAIR'S FINEST PROPERTIES



## HILL STREET, W1J

£5,250,000

An elegant three-bedroom, split level apartment in a Grade II listed block in the heart of Mayfair with a share of the freehold.

Situated on the second and third floor of a period building with lift, 24-hour concierge service and communal residents lounge, this sophisticated apartment has been sympathetically renovated throughout and offering a blend of classic architecture with contemporary comforts.

The impressive reception room measures nearly 30 feet in width with 3.9 metre ceiling heights and three large sash windows and a south facing vista. The second floor has a modern kitchen, separate WC and the large principal bedroom suite with walk in wardrobe and en suite bathroom. On the third floor, there are two further double bedrooms, both en suite and with built in storage.

33-35 HILL STREET IS AN IMPOSING, GRADE II LISTED BLOCK LOCATED ON THE WESTERN SIDE OF THE STREET MOMENTS FROM HYDE PARK AND ALL THE AMENITIES THAT MAYFAIR HAS TO OFFER.



## FEATURES

- Prime Mayfair Location • Three Bedrooms • Three Bathrooms • 24 Hour Concierge • Lift Access • Share of Freehold •

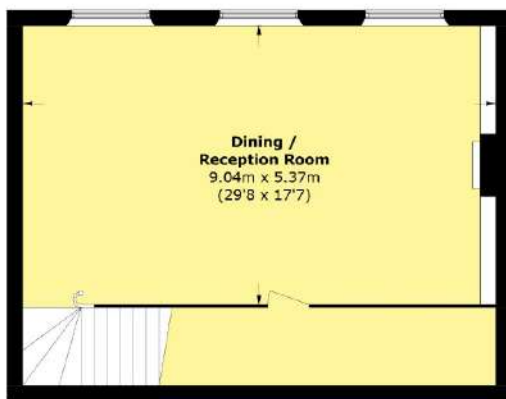




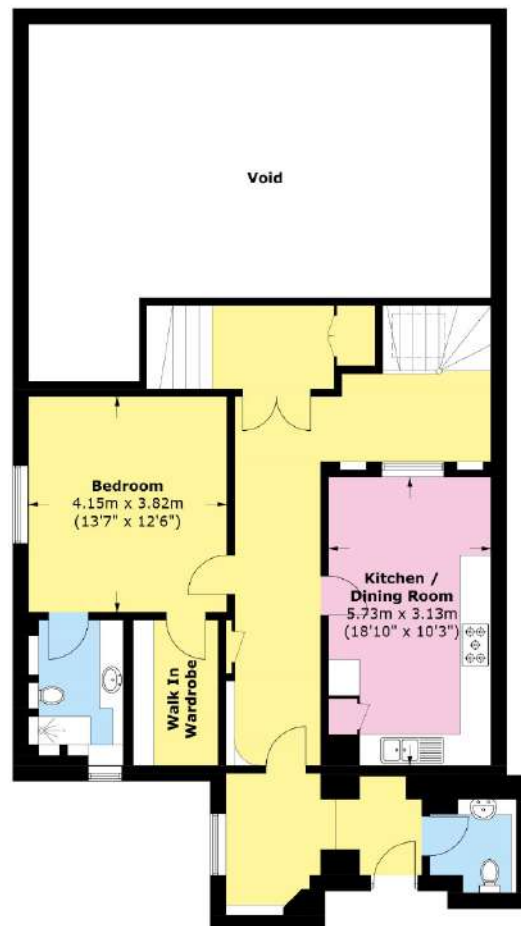
# HILL STREET, LONDON, W1J



**Third Floor**



**Lower Second Floor**



**Second Floor**

Total area (approx.): 198.13 sq. m (2,132.6 sq. ft)  
(Excluding Void)



**WETHERELL**  
MAYFAIR'S FINEST PROPERTIES

102 Mount Street,  
London, W1K 2TH  
T: 020 7529 5566  
E: [sales@wetherell.co.uk](mailto:sales@wetherell.co.uk)

We aim to make our particulars both accurate and reliable. However they are not guaranteed; nor do they form part of an offer or contract. If you require clarification on any points then please contact us, especially if you're traveling some distance to view. Please note that appliances and heating systems have not been tested and therefore no warranties can be given as to their working order.

[wetherell.co.uk](http://wetherell.co.uk)