

# Woodlands Harlow Common

Harlow, Essex

Guide Price £800,000

Filled with space this four double bedroom home is full of scope to create something spectacular.

Overlooking Harlow Common with easy access to the M11, get set to fall in love with this unique home.

Council Tax band: G

Tenure: Freehold

- Chain free
- Spacious four double bedroom home
- Opportunity to add own stamp
- Driveway & Double Garage
- Annexe potential
- Overlooking Harlow Common
- Easy access to M11
- Spectacular 'forever home' potential



**Entrance Hall**

**Living Room**

19' 11" x 13' 10" (6.08m x 4.22m)

**Dining Room**

11' 10" x 13' 10" (3.61m x 4.22m)

**Sitting Room**

11' 2" x 5' 4" (3.40m x 1.63m)

**Kitchen**

9' 10" x 10' 2" (3.00m x 3.10m)

**Utility Room**

7' 10" x 9' 7" (2.39m x 2.91m)

**WC**

**Study**

13' 11" x 9' 8" (4.24m x 2.95m)

**Cigar Room**

10' 0" x 9' 8" (3.04m x 2.95m)

**Entertaining Room**

23' 0" x 16' 6" (7.01m x 5.04m)

**Sitting Room**

13' 0" x 10' 9" (3.96m x 3.27m)

**Utility Room / WC**

9' 9" x 7' 5" (2.96m x 2.25m)

**Plant Room**

11' 1" x 16' 6" (3.38m x 5.04m)

**Bedroom**

11' 9" x 12' 10" (3.57m x 3.90m)

**Ensuite Shower Room**

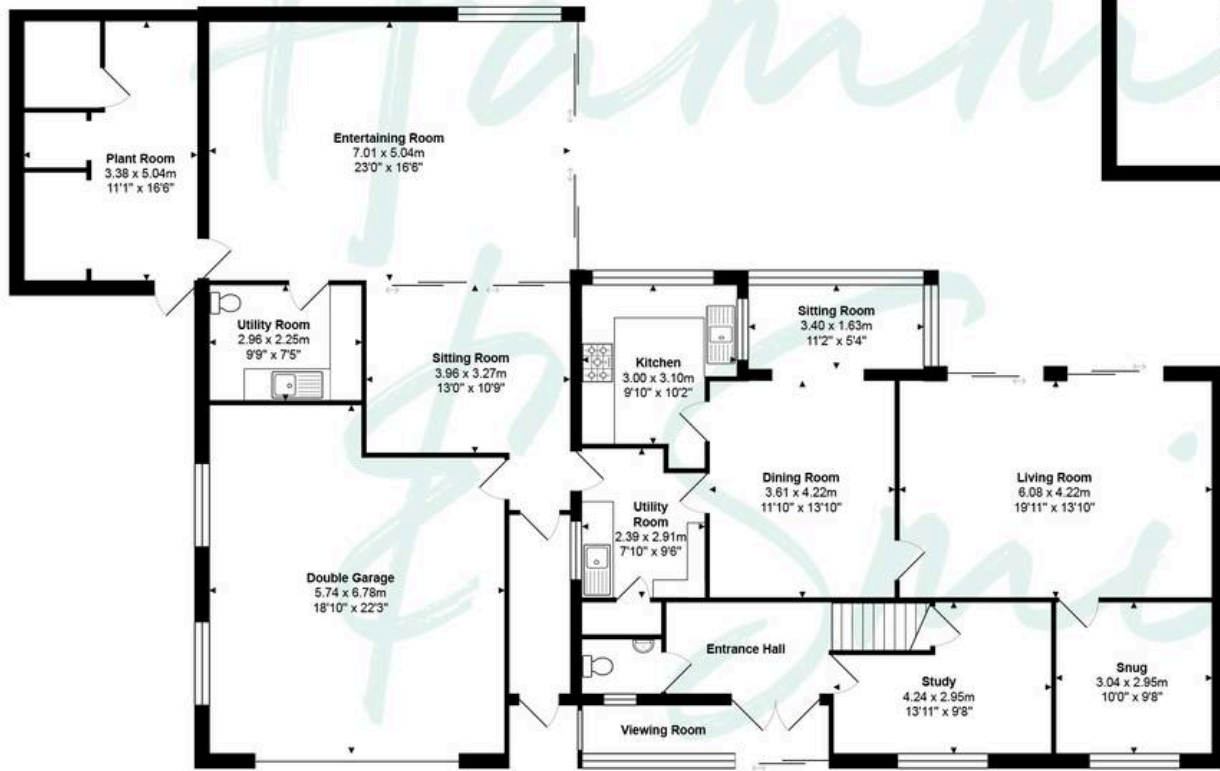
**Bedroom**

9' 11" x 14' 4" (3.02m x 4.37m)

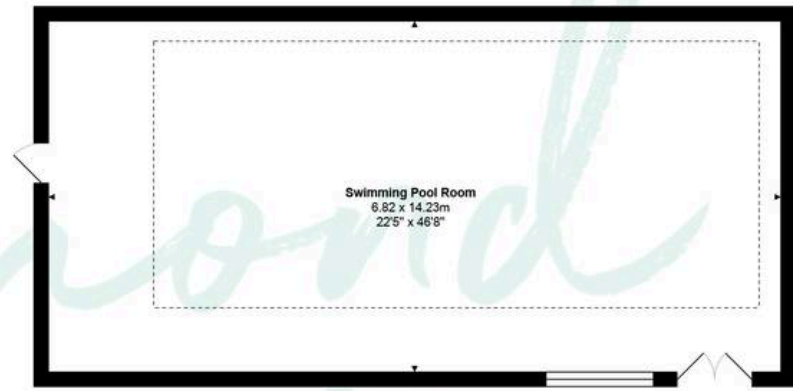
**Bedroom**







**Ground Floor**  
Area: approx. 202.2 m<sup>2</sup> ... 2177 ft<sup>2</sup>



Swimming Pool



**First Floor**  
Area: approx. 78.7 m<sup>2</sup> ... 847 ft<sup>2</sup>

Total Area: approx. 281.0 m<sup>2</sup> ... 3024 ft<sup>2</sup> (excluding plant room, swimming pool room)

THE FLOORPLAN IS FOR ILLUSTRATIVE PURPOSES ONLY AND IS NOT TO SCALE.  
Measurements and features are approximate and may differ from the actual property. Verify all details independently, no liability is accepted for errors or omissions.

Property marketing provided by [www.fotomarketing.co.uk](http://www.fotomarketing.co.uk)