
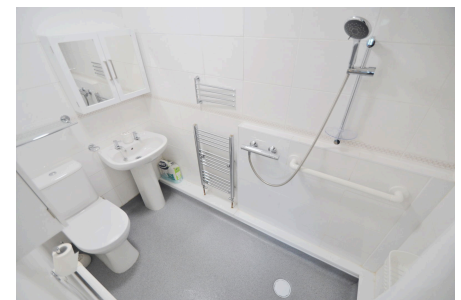


Portland Court, Wellington Road, New Brighton

£89,995 EPC Rating C Council Tax Band A

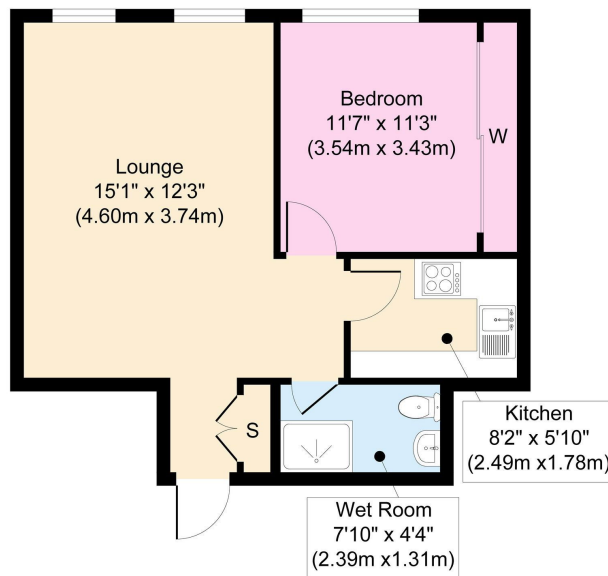
 1  1  1



250 year lease Set on the lower floor of this popular purpose-built block of flats and offering fantastic views across New Brighton waterfront from both the living room and this bedroom, is this excellent apartment which has the benefit of being sold with no chain. A great option for someone looking to downsize or just an excuse to live near the sea! Interior: secure communal entrance with intercom system, inner hallway, living/dining room, kitchen, bedroom and new wet room. Complete with uPVC double glazing and gas central heating system. There are also well-kept communal areas including gardens, entrance lounge, laundry room and parking at the front and side. Viewing is highly recommended to appreciate all this apartment has to offer; be quick!

Key Features

- One Bedroom Apartment
- Stunning Sea Views
- EPC Rating C
- Set on the Lower Ground Floor
- Sold With No Chain
- Council Tax Band A
-
-



Ground Floor
Approximate Floor Area
483 sq. ft
(44.88 sq. m)

Copyright V360 Ltd 2022 | www.houseviz.com