

ELVERTON STREET
WESTMINSTER

JACKSON-STOPS 

ELVERTON STREET, WESTMINSTER, SW1P

ASKING PRICE: £640,000

A well appointed first floor two bedroom apartment is presented to the market in Westminster, SW1.

With a contemporary finish throughout and well-proportioned rooms including a smart open kitchen / reception room this property has the added benefit of private parking. This would suit all those looking for a prime central pied-a-terre or first time buy as well as those looking to capitalise on the rental yields available.

Cobbold Court is located just off Horseferry road, only 0.6 miles from Victoria mainline station.

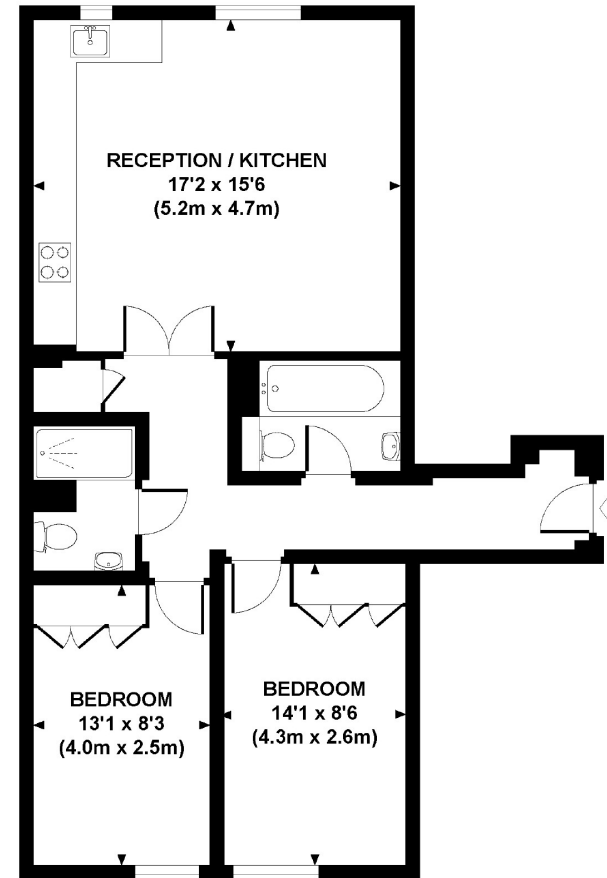
KEY FEATURES

- Leasehold: 158 Yrs Left
- Two Bedrooms
- Service Charge: £2,682 pa
- Lift
- Communal Terrace
- Underground Parking

Energy Rating: B. We aim to make our particulars both accurate and reliable. However they are not guaranteed; nor do they form part of an offer or contract. If you require clarification on any points then please contact us, especially if you are travelling some distance to view. Please note that appliances and heating systems have not been tested and therefore no warranties can be given as to their good working order.

COBBOLD COURT, ELVERTON STREET, SW1

Approx. gross internal area
714 Sq Ft. / 66.4 Sq M.



FIRST FLOOR

dsg All measurements are approximate and for illustrative purposes only as defined by the RICS Code of Measuring Practice © 2011
Drawing Jones Design www.drawingjones.com 020 7519 9933

ASKING PRICE: £640,000

PIMLICO

020 7828 4050

pimlicosales@jackson-stops.com

jackson-stops.co.uk

JACKSON-STOPS