



## Peacock Close, NW7

£425,000

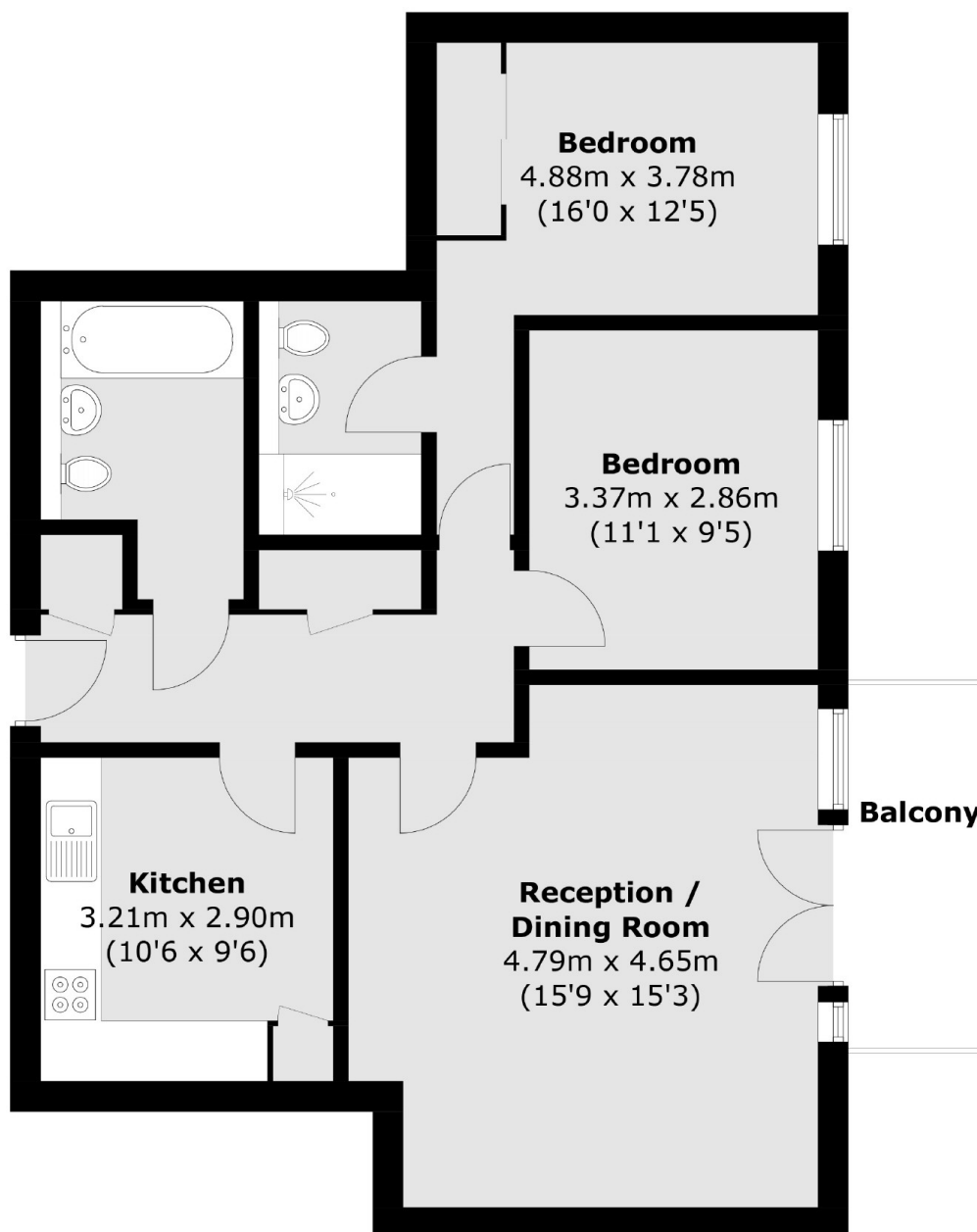
A well-presented two double bedroom apartment set on the raised ground floor of this modern development. This property has one bathrooms and one en suite shower room, a separate kitchen and a private balcony.

Peacock Close is located within walking distance of Mill Hill East underground station (Northern Line). Ideally located close to green spaces and local shops bars and restaurants.

### Features

- Two Bedrooms
- Two Bathrooms
- Private Balcony
- Long Lease
- Modern Development
- Raised Ground Floor

# Peacock Close, London, NW7



Total area (approx.): 74.8 sq. m (805.1 sq. ft)  
Balcony : 4.9 sq. m (52.7 sq. ft)