



PORTEUS PLACE, SW4

£825,000

Two double bedrooms
Two bathrooms
Secure gated development
First floor apartment
Adjacent to Clapham Common
Energy rating: B

@marshandparsons
marshandparsons.co.uk

MARSH &
PARSONS

ABOUT THE PROPERTY

A beautifully presented two-bedroom, two-bathroom first-floor apartment in a sought-after gated development moments from Clapham Common, offering bright, contemporary living with a private balcony.

This stylish property boasts floor-to-ceiling windows and a bright open-plan living space, complemented by contemporary fittings and underfloor heating throughout. Set within a secure gated development with weekday concierge service, lift and stairwell access, and secure bike storage, the building offers both convenience and peace of mind.

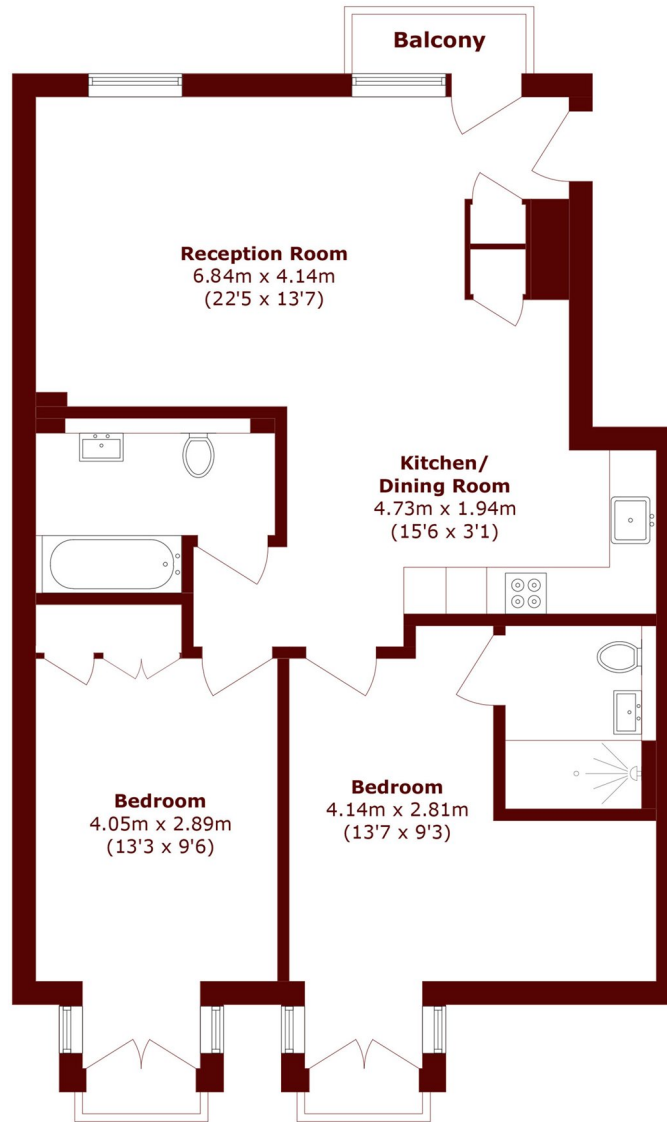








STEP INSIDE PORTEUS PLACE



Total area (approx.): 88.5 sq. m (952.6 sq. ft)

Balcony area (approx.): 1.6 sq. m (17'2 sq. ft)

Clapham
020 7501 3666

Energy Rating: B We aim to make our particulars both accurate and reliable. However, they are not guaranteed; nor do they form part of an offer or contract. If you require clarification on any points then please contact us, especially if you're traveling some distance to view. Please note that appliances and heating systems have not been tested and therefore no warranties can be given as to their good working order

MARSH &
PARSONS