



68 Willoughby Park

Alnwick

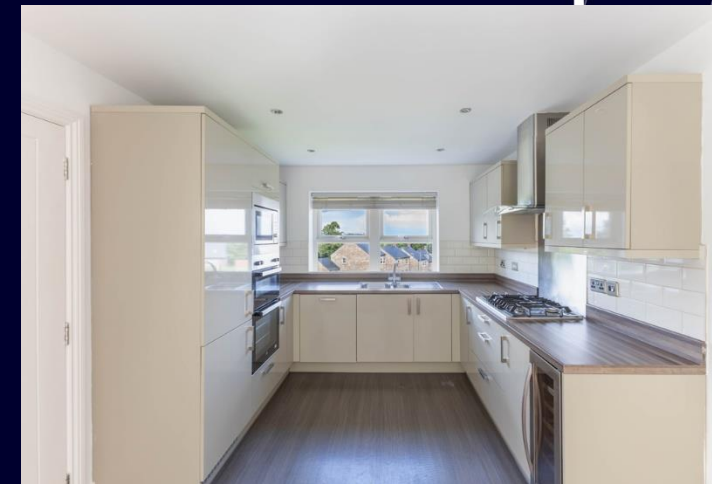


## 68 Willoughby Park, Alnwick, Northumberland, NE66 1ET

**Excellent 4/5 bedroom, three storey detached family home, well positioned on an elevated site overlooking the green to the front, with views towards Alnwick Castle and the Pastures in the distance, with landscaped gardens to the front and rear, a block paved driveway for two cars and an integral single garage - No Upward Chain**

A superb three storey family home, built by Cussins in 2014, on a small cul de sac on this modern development, with easy access to Alnwick town centre, a wide variety of local amenities and schooling for all ages. The property offers versatile accommodation over three floors, with great views from the upper floors to Alnwick Castle and the surrounding countryside.

Ground floor - Entrance hallway with stairs to first floor and a door into the integral garage | Ground floor bedroom 5/family room – a generous versatile room with a door to the Jack and Jill shower room | Ground floor shower room/WC.





First floor - First floor landing with a staircase to the 2nd floor | A lovely sitting room with a windows to the front with views over Alnwick town to the Castle and French doors to the rear garden | Contemporary kitchen/dining room with a lovely dual aspect, with French doors opening to the rear garden and a window to the front with great elevated views - the kitchen is fitted with a range of high gloss cabinets, with integrated appliances; five ring gas hob, double oven, microwave, dishwasher and fridge freezer | Separate utility room with plumbing for a washing machine.

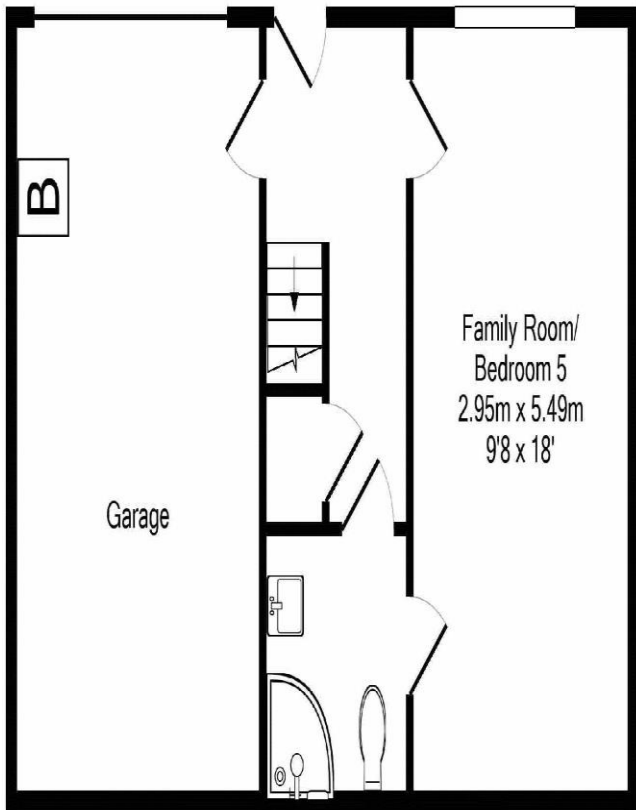
Second floor - Second floor landing | Master bedroom with fitted wardrobes | Ensuite with shower, WC and wash hand basin | Second double bedroom with fitted wardrobes | Two further bedrooms | Family bathroom with bath, WC and wash hand basin.

Externally - Open plan lawned garden to the front, with a block paved driveway for two cars | Single integral garage with access into the hallway | To the rear is a generous lawned garden with a paved patio terrace and raised planted bed.

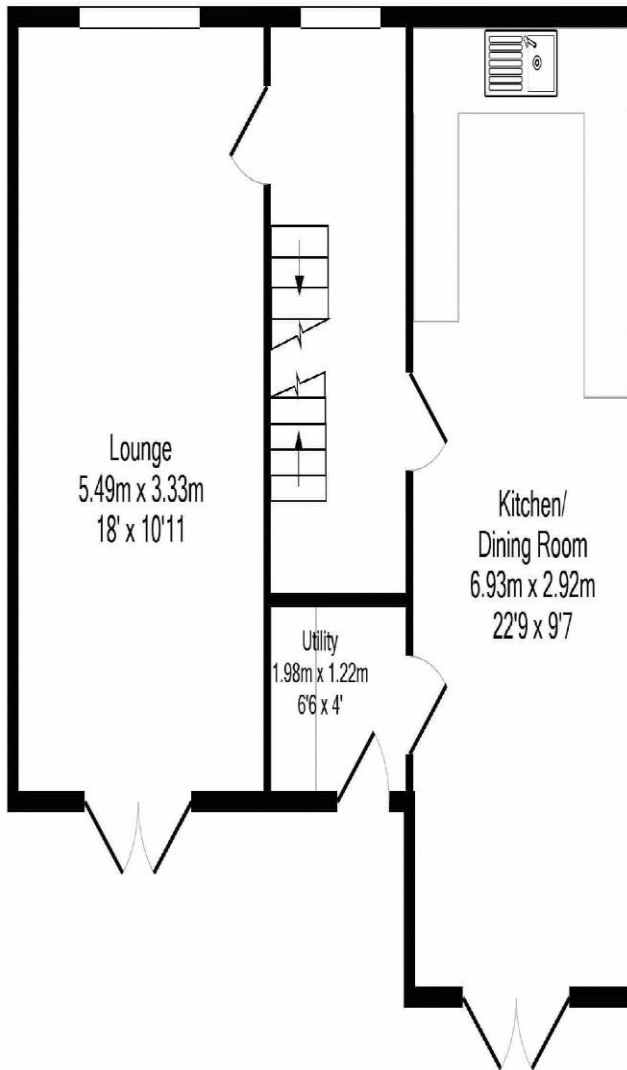
Services: Mains Electric, Gas, Water and Drainage | Gas Central Heating | Tenure: Leasehold | Council Tax: Band E | EPC: C

Lease Details: Lease Term Remaining: 986 Years | Expiry Date of Lease: 1st January 2112 | Ground Rent: £370 annually | Service Charge: None | Owner of Freehold: Adriatic Land 3 LTD | Managing Agents: Home Ground

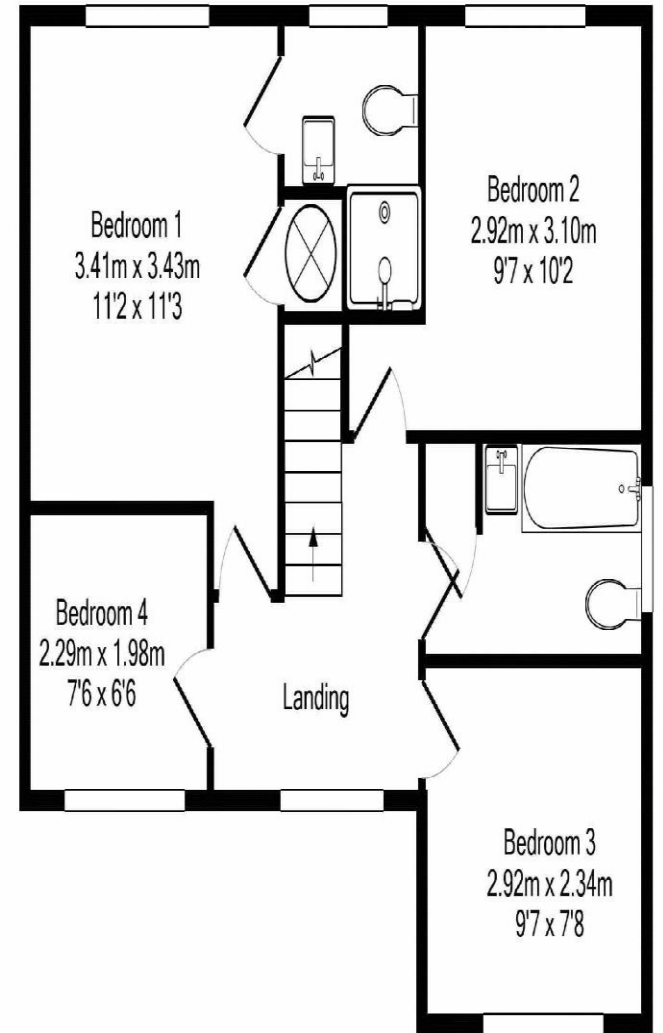
**Guide Price £395,000**



Ground Floor



1st Floor



2nd Floor

Whilst every attempt has been made to ensure the accuracy of the floor plan contained here, measurements of doors, windows, rooms and any other items are approximate and no responsibility is taken for any error, omission, or mis-statement. This plan is for illustrative purposes only and should be used as such by any prospective purchaser. The services, systems and appliances shown have not been tested and no guarantee as to their operability or efficiency can be given





SANDERSON  
YOUNG

Alnwick Office  
35 Bondgate Without | Alnwick  
Northumberland | NE66 1PR  
alnwick@sandersonyoung.co.uk  
01665 600 170