



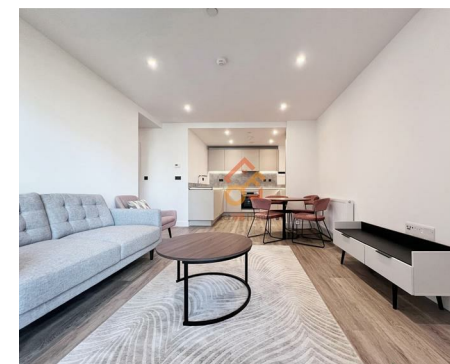
Let **UK** Home

2 Bedrooms

Flat

**Located
in Birmingham**

£1,800 Per Month



pmadmin@letukhome.co.uk

<https://www.letukhome.co.uk/>

0121 828 8955



63 Shadwell Street Birmingham

B4 6LQ



Let UK Home are excited to offer this spectacular two bedroom apartment in the heart of The Fazele, part of the Snowhill Wharf.

This property comprises a large bright open plan kitchen and living room leading to a large private balcony with great views, two double bedrooms (master en-suite with wardrobe), a large family sized bathroom and ample storage.

Residents of Snow Hill Wharf can enjoy exclusive facilities, including concierge, cinema room, sauna & steam room, meeting rooms, residents lounge and gymnasium. Furthermore, residents will also benefit from an unrivalled selection of shops, bars, restaurants, leisure facilities and beautiful courtyards.

The core business district, Colmore Business District, is only a short walk from the development. There are many restaurants around the apartment, with 3 Michelin restaurants (Opheem, Purnell's, Adam's) and many cafes and bars within walking distance, as well as Chinatown with 20 Chinese restaurants. Selfridges, one of the most high-end department store chains in the UK, Bullring & Grand Central, the largest urban shopping mall in the UK, and 12 theaters and cinemas of varying sizes are also within walking distance. In addition, St Philip's Cathedral and the Library of Birmingham, the largest public library in the UK, are also within walking distance.

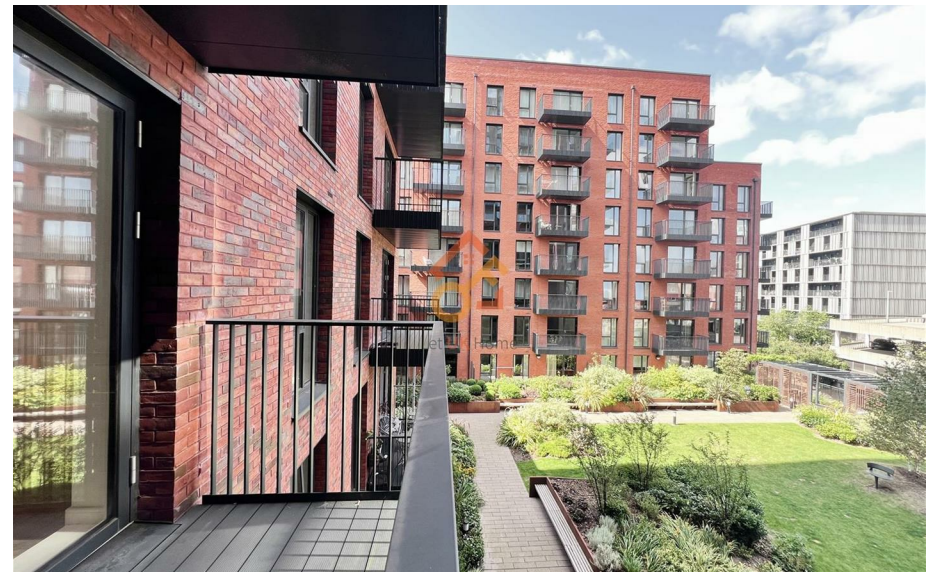
The area around the development is home to many prestigious schools, within walking distance to University College Birmingham, Aston University, and Birmingham City University. University of Birmingham and Newham University can

63 Shadwell Street Birmingham

£1,800 Per Month



- 2nd Floor
- 24h Security
- The Gym
- Sauna & Steam Room
- EPC Rating: B
- Concierge Service
- Meeting rooms
- Cinema & Game Room
- Residents Lounge





APARTMENT C.1-2.10

Total Area	71.5 sq m	769.2 sq ft
Living/Kitchen/Dining	3.68m x 6.82m	12'1" x 22'5"
Master Bedroom	4.75m x 3.82m	15'6" x 12'5"
Bedroom 2	2.75m x 3.35m	9'0" x 11'0"
Balcony	6.0 sq m	64.5 sq ft



Let **UK** Home

Let UK Home

JQ Modern 120 Vyse St

Birmingham

B18 6NF

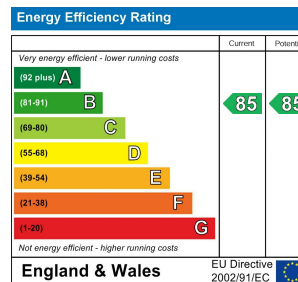
0121 828 8955

padmin@letukhome.co.uk

Council Tax Band: D

Local Authority:

Agents Note: Whilst every care has been taken to prepare these particulars, they are for guidance purposes only. All measurements are approximate and are for general guidance purposes only and whilst every care has been taken to ensure their accuracy, they should not be relied upon and potential buyers/tenants are advised to recheck the measurements.



<https://www.letukhome.co.uk/>