



Randolph Crescent

London, W9

£2,750 per month
(£634.62 per week)

A beautifully refurbished raised ground floor one bedroom in this stunning period conversion. The property comprises: large reception with high ceilings, modern separate kitchen, large bedroom with ample storage & contemporary bathroom.

CHESTERTONS



Randolph Crescent

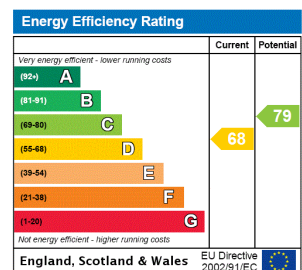
London, W9

- Elegant Victorian Conversion
- Large Bedroom & Modern Bathroom
- Spacious Reception With High Ceilings & Contemporary Kitchen
- Moments To Warwick Avenue & Clifton Road
- EPC Rating D



A beautiful period conversion in one of Little Venice's prime residential crescents. Recently refurbished to a high standard, this raised ground floor one bedroom comprises: large reception with high ceilings, modern separate kitchen, large bedroom with ample storage & contemporary bathroom. Lovely views of beautiful communal gardens. Located moment's to Warwick Avenue Underground Station with the cafes of both Formosa Street & Clifton Gardens on the doorstep. EPC Rating E

Minimum Term: 12 months
Deposit Required: 5 weeks
Local Authority: Westminster
Council Tax Band: E
EPC Rating: D
Part Furnished

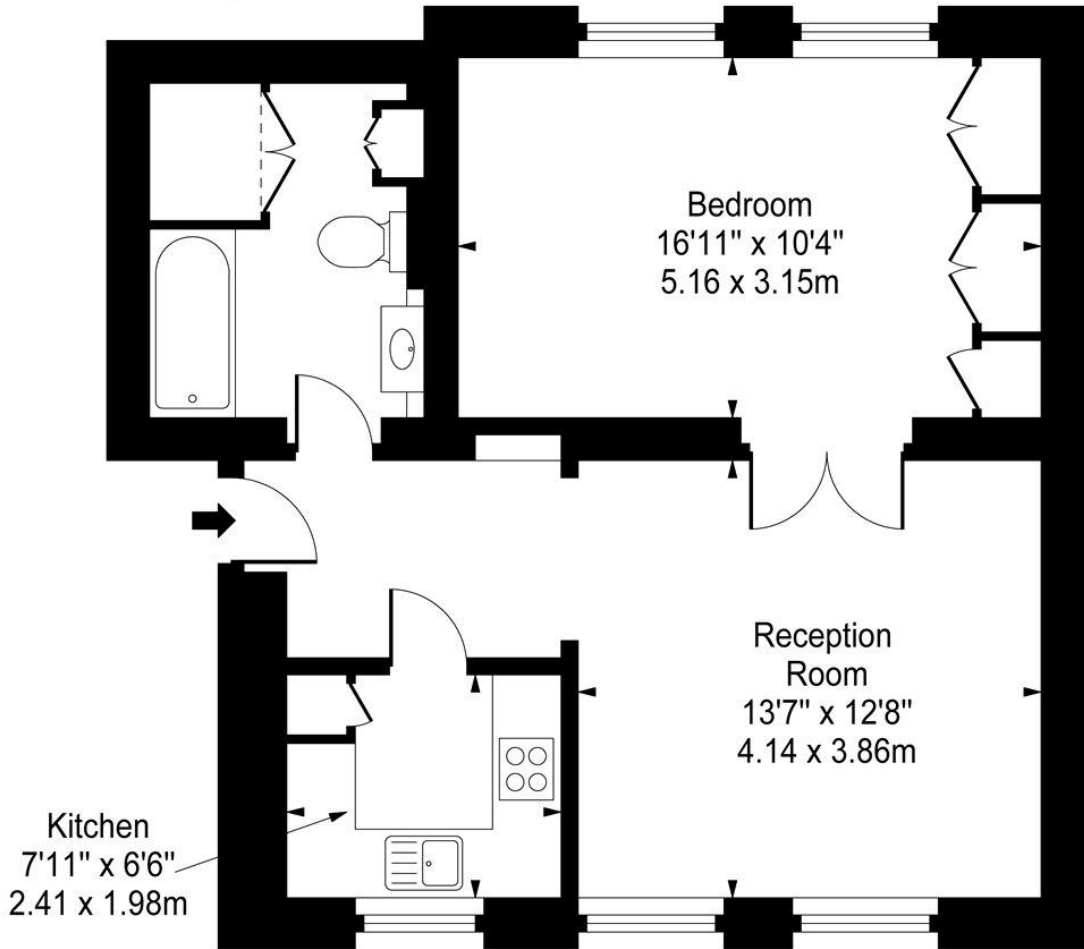
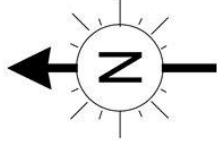


Chestertons Little Venice Lettings

26 Clifton Road
 Maida Vale
 London
 W9 1SX
 littlevenicelettingsusers@chestertons.co.uk
 02072662369
 chestertons.co.uk

Additional tenant charges apply (fees apply to non-AST tenancies only)
 Tenancy Agreement Fee: £300
 References per Tenant/Guarantor: £60
 Inventory check (approx. £100 – £250 inc. VAT)
chestertons.co.uk/property-to-rent/applicable-fees

Randolph Crescent, W9



Raised Ground Floor

Approx Gross Internal Area **580 Sq Ft - 53.88 Sq M**

For Illustration Purposes Only - Not To Scale

www.goldlens.co.uk

Ref. No. 003725K

