



Brondesbury Villas

London, NW6

£2,500 per month
(£576.92 per week)

This spacious two double bedroom apartment is situated on the upper floor within this impressive period conversion. The property comprises; spacious reception room, separate kitchen, two double bedrooms and modern bathroom

CHESTERTONS



Brondesbury Villas

London, NW6

- Two bedrooms
- Large living space
- Modern kitchen
- Modern bathroom



This spacious two double bedroom apartment is situated on the upper floor within this impressive period conversion. The property comprises; spacious reception room, separate kitchen, two double bedrooms and modern bathroom.

The property benefits; high ceilings, original period features and spacious accommodation throughout. The property is offered furnished and available now.

Brondesbury Villas is situated moments from Kilburn station and close to all the amenities of Kilburn High Road.

Minimum Term: 12 months
Deposit Required: 5 weeks
Local Authority: London Borough of Brent
Council Tax Band: D
EPC Rating: E
Furnished

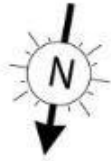
Energy Efficiency Rating		Current	Potential
Very energy efficient - lower running costs			
(92-100)	A		
(81-91)	B		
(69-80)	C		
(55-68)	D		
(39-54)	E	52	60
(21-38)	F		
(1-20)	G		
Not energy efficient - higher running costs			
England, Scotland & Wales		EU Directive 2002/91/EC	


Chestertons Little Venice Lettings

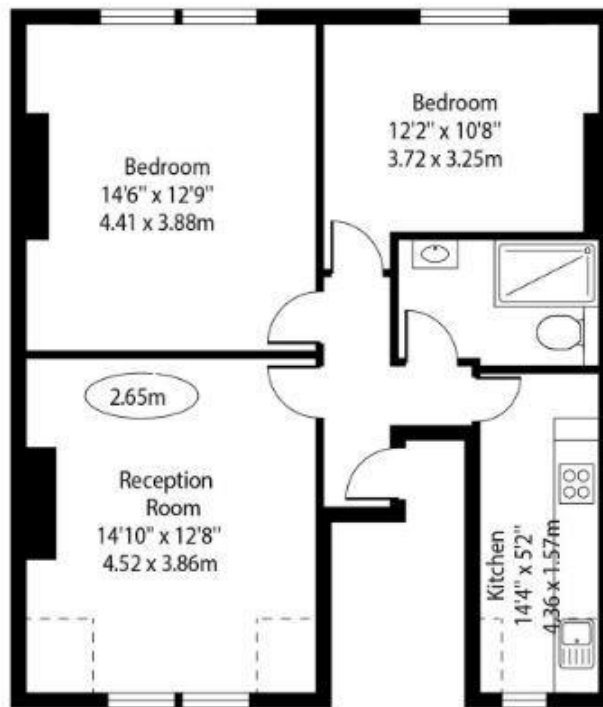
26 Clifton Road
 Maida Vale
 London
 W9 1SX
 littlevenicelettingsusers@chestertons.co.uk
 02072662369
 chestertons.co.uk

Additional tenant charges apply (fees apply to non-AST tenancies only)
 Tenancy Agreement Fee: £300
 References per Tenant/Guarantor: £60
 Inventory check (approx. £100 – £250 inc. VAT)
chestertons.co.uk/property-to-rent/applicable-fees

Brondesbury Villas, NW6



 - Ceiling Height



Second Floor

Approx Gross Internal Area 651 Sq Ft - 60.48 Sq M

Approx Floor Area Including Restricted Heights 673 Sq Ft - 62.52 Sq M

