



**Hayward  
Tod**

**2 Bedroom Detached Bungalow | 15 The Whins | Heads Nook | Brampton | CA8 9AL**  
**Guide Price £275,000**





Spacious bungalow on a pleasant corner plot. Good living space. Garage and garden.

entrance hallway | double bedroom and large dressing room/en-suite | double bedroom two | bathroom | sitting room | dining room | kitchen | detached garage | driveway parking | patio | lawned garden | double glazing | warm air central heating | mains connected gas, water, electricity and drainage | EPC D | council tax band D | freehold

#### APPROXIMATE MILEAGES

Carlisle 6.5 | Brampton 6 | Warwick Bridge 1.5 | Newcastle International Airport 52

#### WHY HEADS NOOK?

A popular village to the east of Carlisle, well located for access to both Carlisle and Brampton as well as the M6 motorway and the scenic Eden Valley. Peaceful yet accessible and with a strong sense of community the village suits residents of all ages. A wide range of amenities including a popular butchers and a Co-op can be found in nearby Warwick Bridge

#### ACCOMMODATION

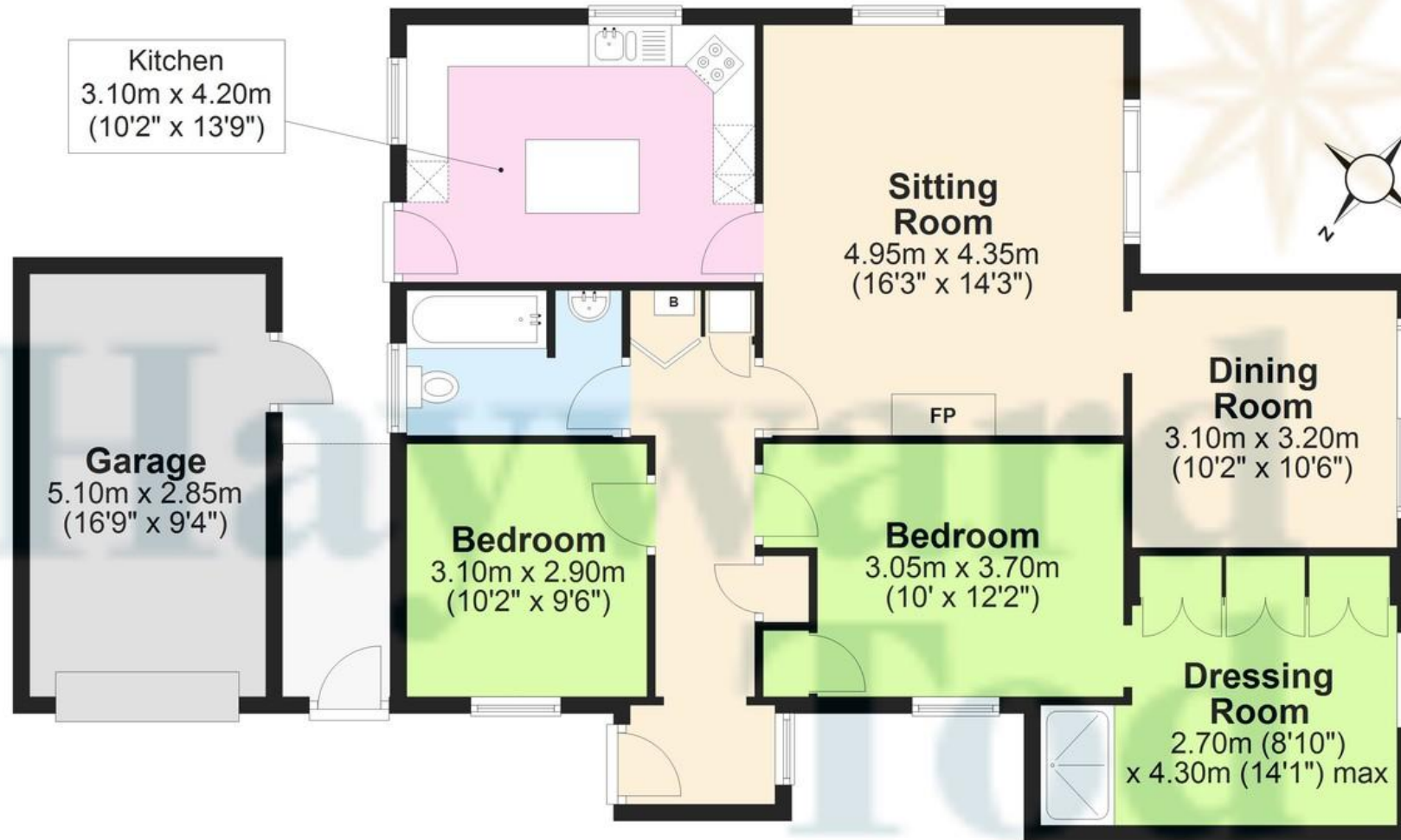
A spacious and well laid out home, providing two double bedrooms and a comfortable living space. Situated at the head of the cul-de-sac on a spacious plot the property is afforded good privacy at the rear and has a lawned garden and patio space with a bright southerly aspect. Additional storage is provided by the garage. The kitchen, at the rear of the property, has a range of fitted units and an island. The living room with a bright corner aspect and patio doors is also open to a dining area with another set of patio doors out to the garden. The larger of the two double bedrooms has an adjoining dressing area with shower. The main bathroom is also fully tiled.





# Ground Floor

Approx. 109.7 sq. metres (1181.2 sq. feet)



Total area: approx. 109.7 sq. metres (1181.2 sq. feet)

## Contact

6 Paternoster Row,  
Carlisle Cumbria CA3 8TT

01228 810 300  
info@haywardtod.co.uk  
haywardtod.co.uk

## Agents note

Whilst every care has been taken to prepare these sales particulars, they are for guidance purposes only. All measurements are

approximate and are for general guidance purposes only and whilst every care has been taken to ensure their accuracy, they should not be relied upon and potential buyers are advised to recheck the measurements.