



Morris Road, Wickham Market Woodbridge IP13 0TF

welcome to

Morris Road, Wickham Market Woodbridge

A beautifully presented two-bedroom mid-terraced home in the peaceful village of Wickham Market, offering a bright living room, contemporary kitchen, ground floor WC, two spacious bedrooms and a modern bathroom. The property also benefits from a well-maintained rear garden and off road parking.

Cloakroom

W/C, radiator, wash hand basin.

Lounge

Double glazed window to front aspect, stairs with storage, two radiators, entrance door.

Kitchen / Diner

Double glazed window to rear aspect, base and eye units, worktops, integrated oven, gas hob, sink with mixer tap, space for washing machine and fridge/freezer, radiator, double glazed door to rear aspect.

Landing

Airing cupboard, radiator, loft hatch, carpet flooring.

Bedroom 1

Two double glazed windows to front aspect, radiator, carpet flooring.

Bedroom 2

Double glazed window to rear aspect, radiator, carpet flooring.

Bathroom

Double glazed window to rear aspect, enclosed bath, wash hand basin, w/c.

Front Garden

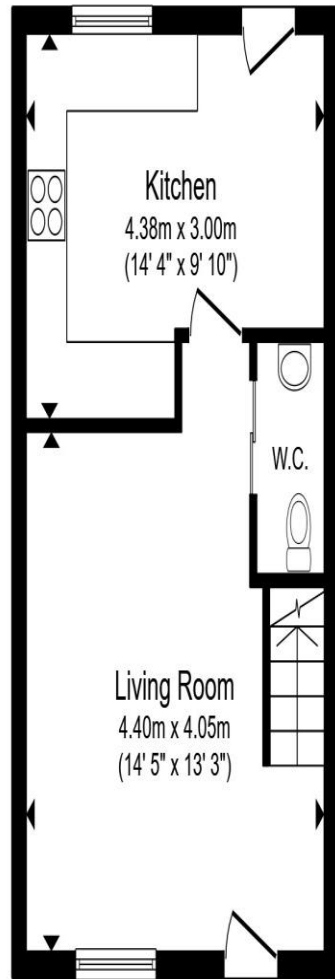
Landscaped garden, shingle.

Rear Garden

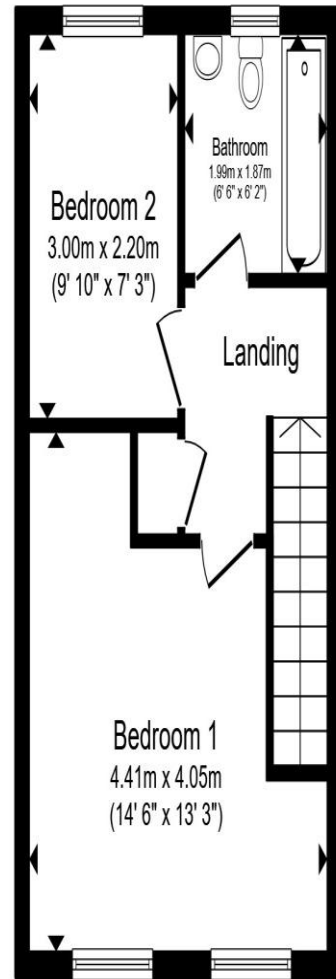
Lawn, patio, enclosed with fence, shed.

Parking

Off road parking at rear.



Ground Floor



First Floor

Total floor area 63.1 m² (679 sq.ft.) approx

This floor plan is for illustrative purposes only. It is not drawn to scale. Any measurements, floor areas (including any total floor area), openings and orientation are approximate. No details are guaranteed, they cannot be relied upon for any purpose and they do not form part of any agreement. No liability is taken for any error, omission or misstatement. A party must rely upon its own inspection(s). Powered by www.propertybox.io



welcome to
Morris Road,
Wickham Market Woodbridge

- A beautifully presented two-bedroom mid-terraced house
- Off road parking at rear
- Peaceful village location
- Ground floor WC and modern family bathroom
- Lovely enclosed rear garden

Tenure: Freehold EPC Rating: C
Council Tax Band: B

guide price

£250,000



view this property online williamhbrown.co.uk/Property/FLH105693



Property Ref:
FLH105693 - 0003

1. MONEY LAUNDERING REGULATIONS Intending purchasers will be asked to produce identification documentation at a later stage and we would ask for your co-operation in order that there is no delay in agreeing the sale. 2. These particulars do not constitute part or all of an offer or contract. 3. The measurements indicated are supplied for guidance only and as such must be considered incorrect. Potential buyers are advised to recheck measurements before committing to any expense. 4. We have not tested any apparatus, equipment, fixtures or services and it is in the buyers interest to check the working condition of any appliances. 5. Where an EPC, or a Home Report (Scotland only) is held for this property, it is available for inspection at the branch by appointment. If you require a printed version of a Home Report, you will need to pay a reasonable production charge reflecting printing and other costs. 6. We are not able to offer an opinion either written or verbal on the content of these reports and this must be obtained from your legal representative. 7. Whilst we take care in preparing these reports, a buyer should ensure that his/her legal representative confirms as soon as possible all matters relating to title including the extent and boundaries of the property and other important matters before exchange of contracts.

William H Brown is a trading name of Sequence (UK) Limited which is registered in England and Wales under company number 4268443, Registered Office is Cumbria House, 16-20 Hockliffe Street, Leighton Buzzard, Bedfordshire, LU7 1GN. VAT Registration Number is 500 2481 05.



william h brown



01728 723923



Framlingham@williamhbrown.co.uk



26 Market Hill, Framlingham, WOODBRIDGE,
Suffolk, IP13 9AN



williamhbrown.co.uk