



Fairy Lane, Manchester

Offers In Excess Of £230,000

Nestled on the charming Fairy Lane in Manchester, this delightful three-bedroom detached house offers a perfect blend of comfort and convenience. Built in 2005, the property boasts a modern design and is ideally situated close to the vibrant heart of central Manchester, making it an excellent choice for those seeking both tranquility and accessibility.

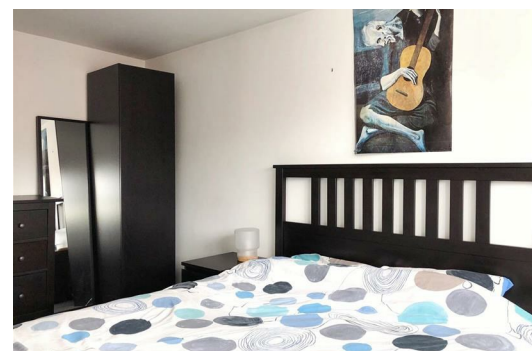
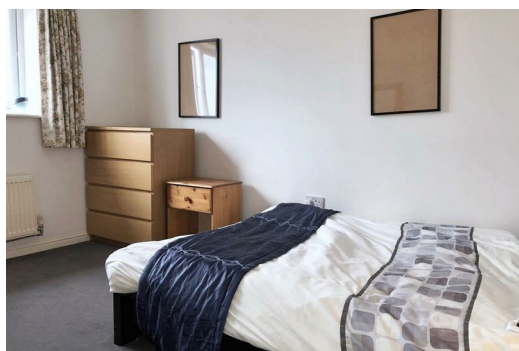
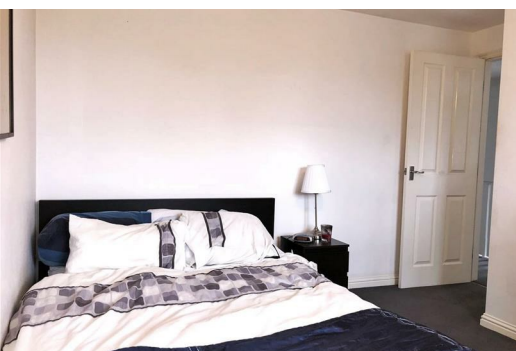
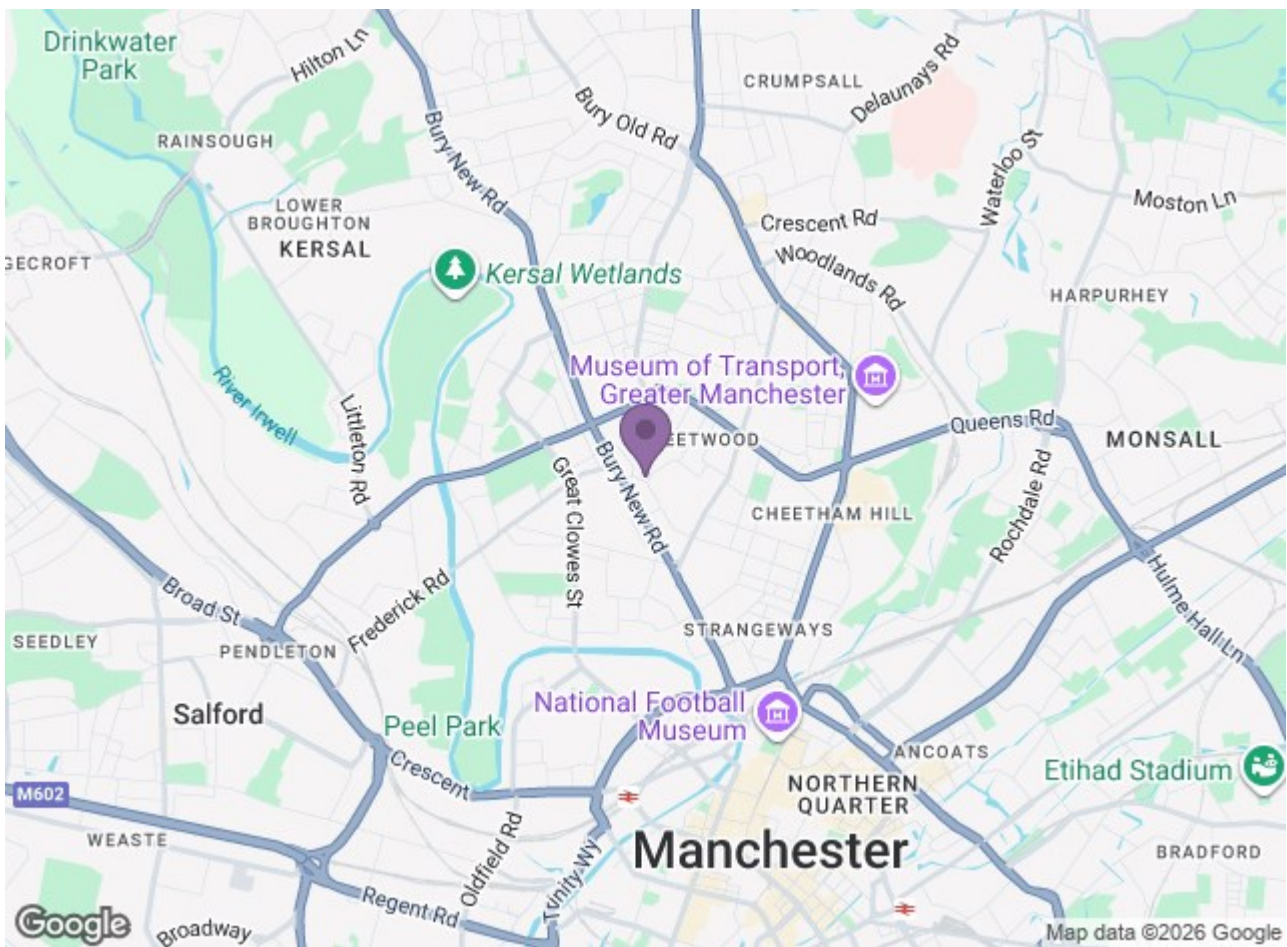
Upon entering, you will find two spacious reception rooms that provide ample space for relaxation and entertaining. The well-appointed layout ensures that each room flows seamlessly into the next, creating a warm and inviting atmosphere. The house features three generously sized bedrooms, perfect for families or those who desire extra space for guests or a home office.

With two bathrooms, morning routines are made easy, accommodating the needs of a busy household. The property also includes parking for one vehicle, a valuable asset in this bustling area.

Residents will appreciate the excellent transport links nearby, making commuting a breeze. Additionally, the Manchester Fort shopping centre and various amenities are just a stone's throw away, offering a range of shopping and dining options to suit all tastes.

This property is an ideal opportunity for anyone looking to settle in a well-connected area of Manchester while enjoying the comforts of a modern home. Don't miss the chance to make this lovely house your new home.





Energy Efficiency Rating		Environmental Impact (CO ₂) Rating	
Current	Potential	Current	Potential
73	85	73	85
A	B	A	B
B	C	B	C
C	D	C	D
D	E	D	E
E	F	E	F
F	G	F	G
G		G	

Ascend
Built on higher standards