

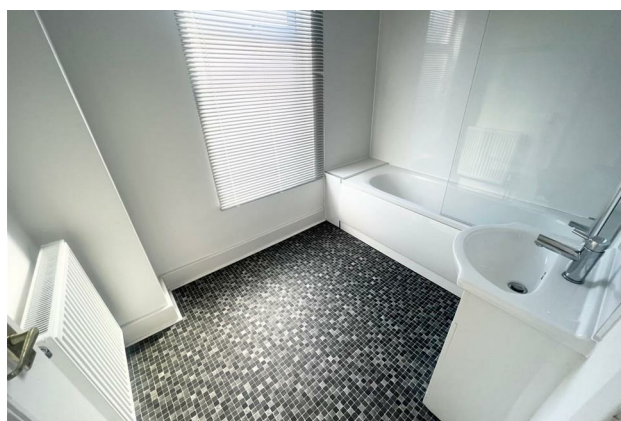
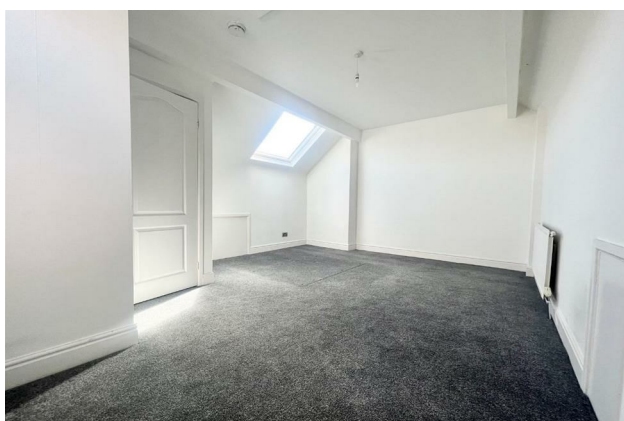
HUNTERS®

HERE TO GET *you* THERE

660 Barnsley Road, Sheffield, S5 6UB

£985 Per Month

Property Images



HUNTERS®

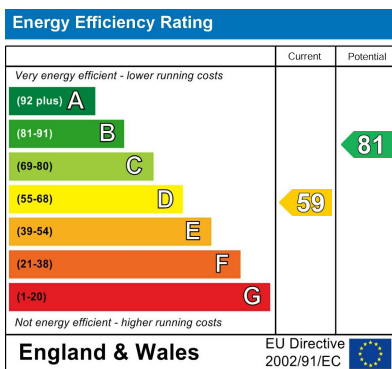
HERE TO GET *you* THERE

Property Images

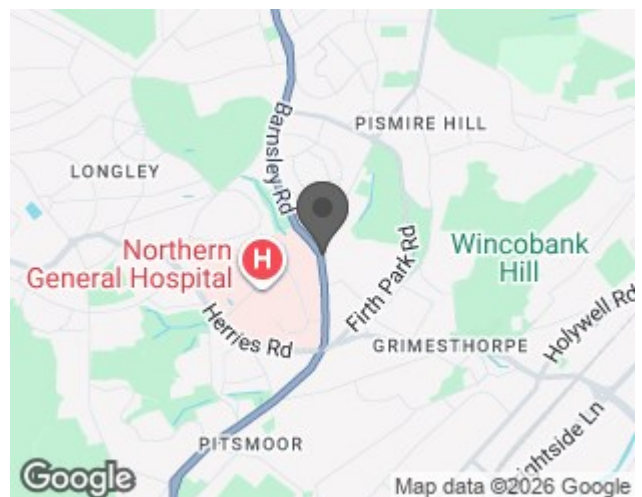


Floorplan

EPC



Map



Details

Type: House - Semi-Detached Beds: 3 Bathrooms: 1 Receptions: 2 Tenure:

Summary

Nestled on Barnsley Road in Sheffield, this charming 3-bed semi-detached house is now available for rent and offers a delightful blend of space and character. Perfectly positioned opposite the Northern General Hospital, the property benefits from excellent public transport links and is conveniently located near a variety of amenities. Families will appreciate the proximity to reputable schools, while direct roads provide easy access to Sheffield, Rotherham, and Meadowhall.

Upon entering, you are greeted by a welcoming entrance hall that leads to two generous reception rooms, ideal for both relaxation and entertaining. The living room is bright and airy, while the separate dining room offers a perfect setting for family meals. The kitchen comes equipped with essential appliances, making it a practical space for culinary endeavours.

The property features three spacious double bedrooms, each designed to provide comfort and tranquillity. The family bathroom is well-appointed, complete with a shower over the bath, and there is an additional separate toilet for convenience. Ample storage is available in the downstairs cellar, ensuring that all your belongings can be neatly tucked away.

Features

• 3 BED SEMI DETACHED • AVAIL NOW • GENEROUS DIMENSIONS • NEUTRAL FRESH DECOR THROUGHOUT • CONTEMPORARY KITCHEN AND BATHROOM • LOW MAINTENANCE GARDEN • GREAT FOR THE HOSPITAL • GOOD COMMUTER LOCATION • EPC RATING E • COUNCIL TAX BAND B