



15 Skinner Street, YO21

Offers in the Region of **£225,000**

Hendersons.
Estate & Letting Agents



Beautifully presented town house apartment in the heart of Whitby offering over 800 sq. ft. of stylish accommodation over two floors with two reception rooms, log burner, private entrance, rear yard and character features, just moments from the town's amenities.

Situated in the heart of Whitby, this beautifully presented duplex apartment combines generous proportions with characterful period detailing, thoughtfully arranged across two floors.

Accessed via its own private entrance, the property strikes an excellent balance between stylish comfort and Victorian charm. The main living accommodation includes a welcoming lounge centred around a recently installed log burner, alongside a separate dining room creating a versatile layout suited to both relaxed everyday living and entertaining.

The kitchen is well-appointed with ample storage and workspace, while a cleverly concealed walk-in pantry adds further practicality.

To the upper floor are two light-filled double bedrooms, each offering a calming retreat, complemented by a stylish bathroom with large walk in shower. Recent improvements including new windows and external doors enhance both the aesthetic and efficiency of the home.

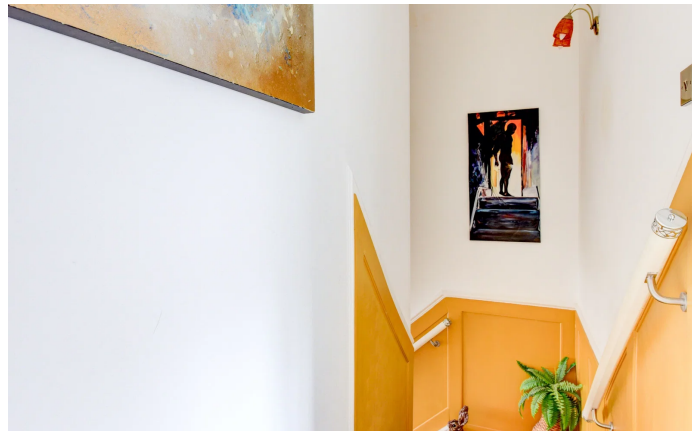
Externally, the property benefits from a small rear yard, accessed via the cute stable door, together with useful external storage including a private shed and dedicated log store.

Positioned just moments from the unique independent shops, cafés and restaurants of Skinner Street and Flowergate, this is an exceptional opportunity to acquire a substantial town-centre home or investment property within one of Whitby's most sought after locations.

Bedrooms: 2 | Bathrooms: 1 | Receptions: 2

Tenure: Share of Freehold







Energy performance certificate (EPC)

| | | |
|--|--|------------------------------|
| 13 Silver Street YO21 3BX | Energy rating D | Valid until 31 March 2023 |
| Property type Ground-floor maisonette | Certificate number 1000-6005-6123-6016-1773 | |
| Total floor area 101 square metres | | |

Rules on letting this property

Properties can be let if they have an energy rating from A to E.

You can read guidance for landlords on the regulations and exemptions: <https://www.gov.uk/guidance/domestic-lettings-conditions-minimum-energy-efficiency-standards-landlord-guidance>.

Energy rating and score

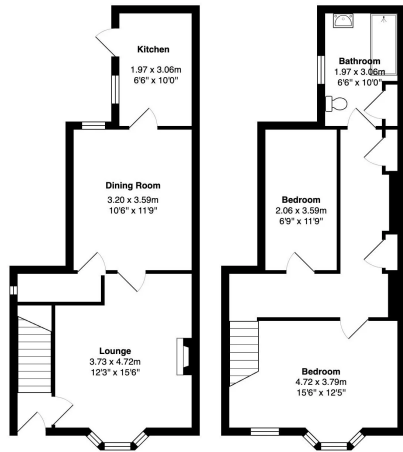
This property's energy rating is D. It has the potential to be C.

The graph shows this property's current and potential energy rating.

Properties get a rating from A (best) to G (worst) and a score. The better the rating and score, the lower your energy bills are likely to be.

See how to improve this property's energy efficiency.

For properties in England and Wales:
the average energy rating is D
the average energy score is 60



Hendersons Estate Agents

22-23 Flowergate Whitby North Yorkshire YO21 3BA

01947 602626

hello@myhendersons.co.uk

https://myhendersons.co.uk/

Hendersons.

Estate & Letting Agents

Disclaimer

These particulars are intended to give a fair and accurate description of the property, but their accuracy cannot be guaranteed and they do not constitute an offer or contract. All descriptions, dimensions, references to condition, fixtures and fittings, services, council tax, tenure, or any other details are given in good faith but should not be relied upon as statements of fact. Any interested parties must satisfy themselves by inspection or otherwise as to the correctness of each of the statements contained herein.