

Location:

Westbourne Avenue is within walking distance of Churchfield Road, offering a range of cafés and restaurants, as well as Acton Park. Acton Main Line (Elizabeth Line) station is also nearby, providing convenient access into central London.

Key points:

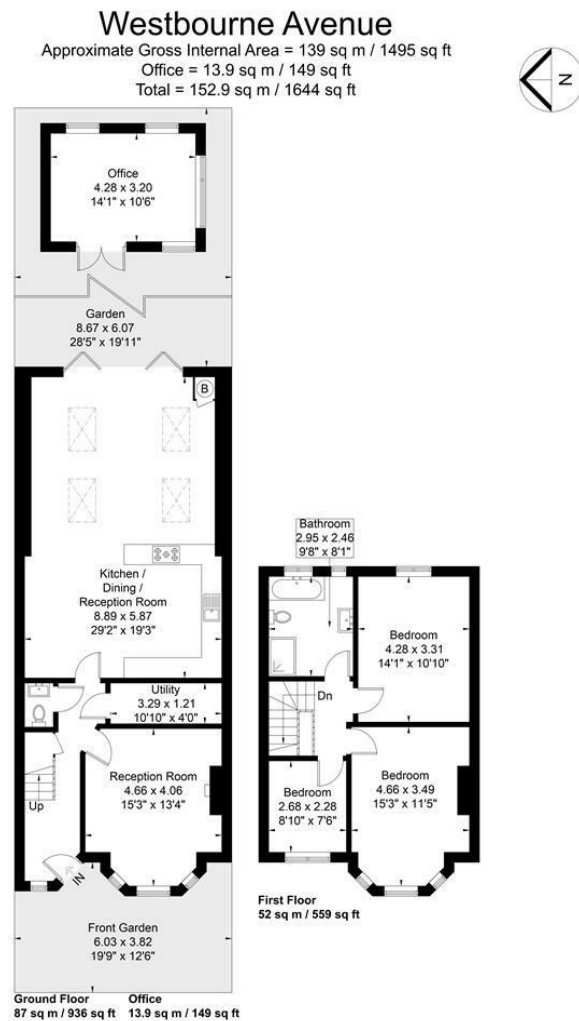
- Available now
- Three bedroom family home
- Excellent living space
- Short walk to Acton Mainline Elizabeth Line
- Ealing council tax band F
- Churchfield Road nearby
- Acton Park nearby

Do Better:

Acton
sales@astonrowe.co.uk

57-59 Churchfield Road,
Acton, London, W3 6AY

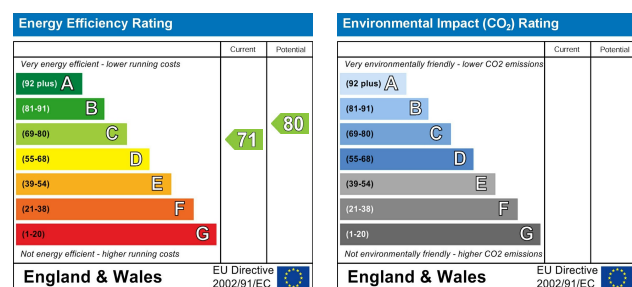
020 8992 3600



Although every attempt has been made to ensure accuracy, all measurements are approximate. The floorplan is for illustrative purposes only and not to scale. © www.perspective.co.uk

£3,800 Per Month

Westbourne Avenue, London W3 6JL



- 2 Reception Rooms
- 3 Bedrooms
- 2 Bathrooms

The current owner says:

A short walk to Acton Mainline Elizabeth Line

A well-presented three-bedroom family home located on a popular road in the Acton Central/Poets Corner area.

The ground floor offers a front reception room, a downstairs WC, and a recently extended kitchen and dining area, providing a bright and practical open-plan space suitable for everyday family life. The east-facing garden includes an outbuilding, ideal for use as a home office.

Upstairs comprises two double bedrooms, one single bedroom, and a family bathroom.

Westbourne Avenue is within walking distance of Churchfield Road, offering a range of cafés and restaurants, as well as Acton Park. Acton Main Line (Elizabeth Line) station is also nearby, providing convenient access into central London.



What's better:

A three bedroom family home in Acton Central.

