

# Rutland Gate, SW7



A bright and spacious two bedroom flat on the third floor with lift of a period conversion in this lovely Knightsbridge Garden Square moments from Hyde Park, with two bedrooms, one bathroom , guest cloakroom, reception room and separate kitchen and wood floors throughout. Royal Borough of Kensington and Chelsea Council Tax Band G

694 sq ft/ 64.5 sq m | RECEPTION ROOM | 2 BEDROOMS | BATHROOM | GUEST CLOAKROOM | KITCHEN



**Guide Price £1,350,000 STC**

020 7937 9070  
[www.croftinternational.com](http://www.croftinternational.com)

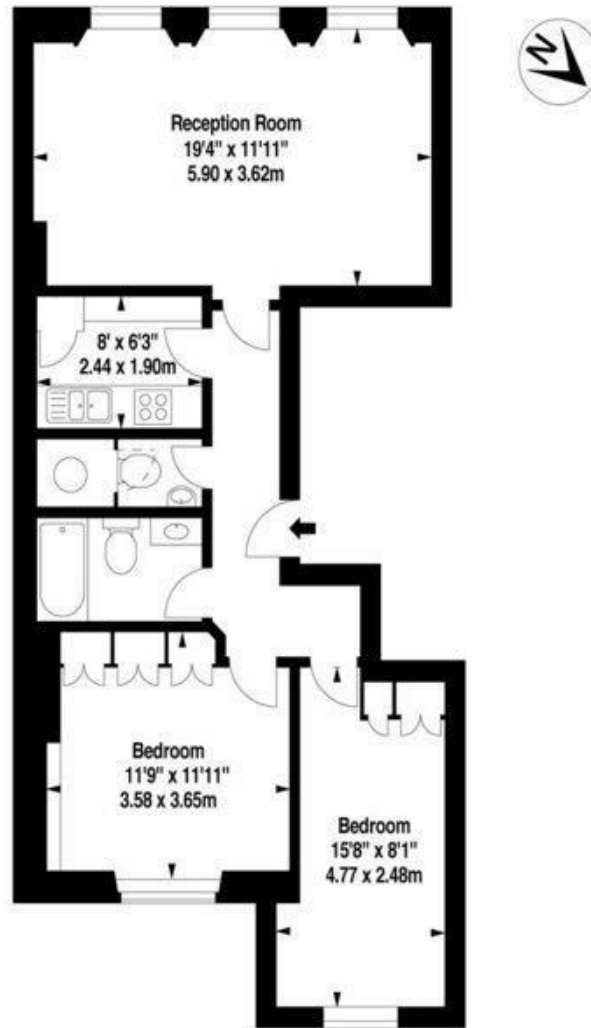
**Leasehold**



# Rutland Gate, SW7

APPROX. GROSS INTERNAL AREA \*  
694 Ft<sup>2</sup> - 64.47 M<sup>2</sup>

This floorplan is for GUIDANCE ONLY and NOT FOR VALUATION purposes.



THIRD FLOOR

