



Price
£140,000

Leasehold

1x  1x  1x 

**Jasmine Court,
Horsham, West Sussex,
RH12**

OVER 60?

Secure this property
for up to **59% less!**

cubitt & west
Helping you move forwards



Main features

- Exclusively for over 55s, well loved and cared for
- Convenient town centre location
- Great position to the rear of the block away from the road
- Communal lounge for social events
- Large bay window in the lounge gives lovely views towards Horsham Park

Accommodation

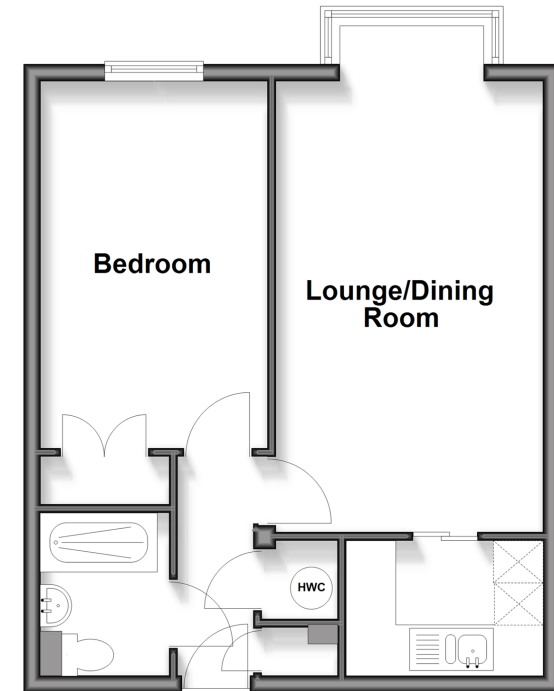
FIRST FLOOR

- Entrance Hall
- Lounge/Dining Room: 19'8 x 10'5 into bay (6.00m x 3.18m)
- Kitchen: 7'9 x 5'5 (2.36m x 1.65m)
- Bedroom: 14'3 x 8'9 (4.35m x 2.67m)
- Shower Room: 6'6 x 5'1 (1.98m x 1.55m)

OUTSIDE

- Communal Garden
- Residents Permit Parking

First Floor
Approx. 42.9 sq. metres (462.2 sq. feet)



Call Horsham - 01403 269268 ■ cubittandwest.co.uk

■ Legal advice should be taken to verify fixtures/fittings, planning, alterations and/or lease details
 ■ Through a Homewise Home For Life Plan people aged 60+ can secure this property for up to 50% less, by purchasing a Lifetime Lease.

■ Appliances & services are untested, dimensions are approximate and floor plans are not to scale



20918085/20251002/DD/CB