



Guide Price
£200,000

Leasehold

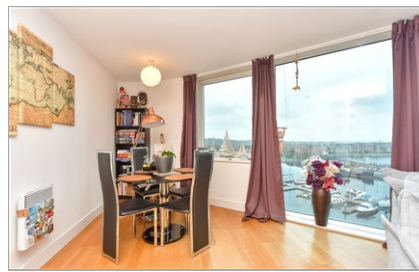
2x  2x  1x 

**Marina Point East, Dock
Head Road, St Marys
Island, Chatham, Kent,
ME4**

OVER 60?

Secure this property
for up to **59% less!**

Wards
Helping you move forwards



Sixth Floor

Approx. 66.5 sq. metres (715.7 sq. feet)

Main features

- Fourth floor flat with stunning views
- Parking space in the undercroft
- Main bathroom and additional en-suite shower room
- Perfect purchase for a first time buyer or an investor looking to add to portfolio
- Great location due to walking distance to Dockside Outlet Centre, restaurants and cinema

Accommodation

SIXTH FLOOR

Hallway

Kitchen/Living Area: 25'4 x 13'0 (7.73m x 3.97m)

Bedroom 1: 16'8 x 12'2 (5.08m x 3.71m)

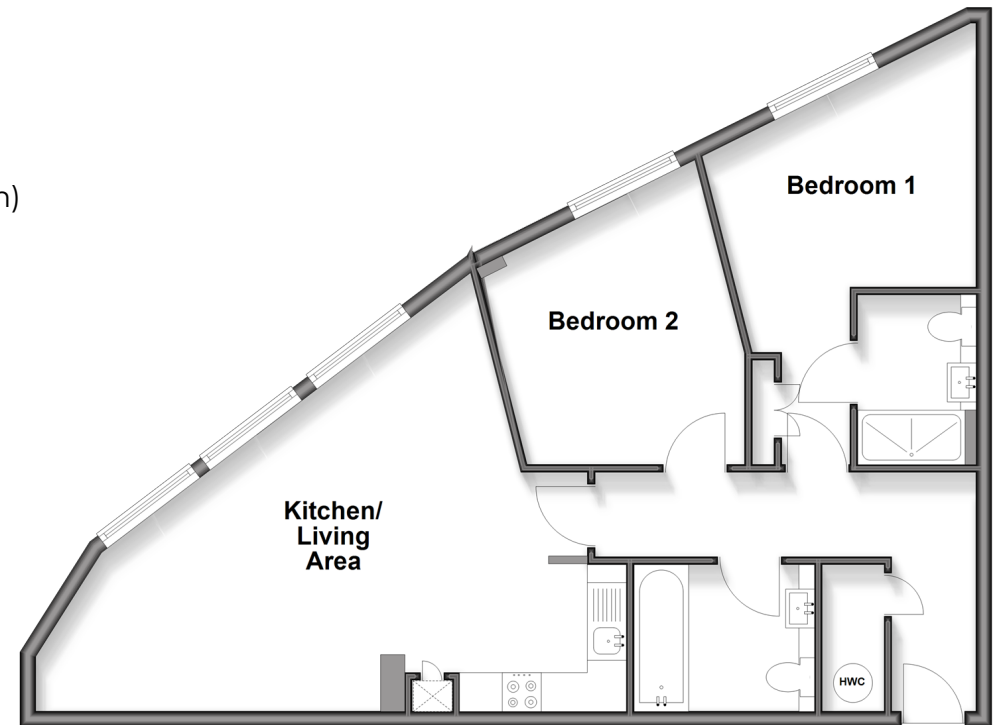
En-suite Shower Room : 7'2 x 4'7 (2.19m x 1.40m)

Bedroom 2: 11'4 x 9'10 (3.46m x 3.00m)

Bathroom: 7'7 x 5'8 (2.31m x 1.73m)

OUTSIDE

Under Croft Parking



Call Chatham - 01634 841243 ■ wardsofkent.co.uk

- Legal advice should be taken to verify fixtures/fittings, planning, alterations and/or lease details
- Through a Homewise Home For Life Plan people aged 60+ can secure this property for up to 50% less, by purchasing a Lifetime Lease.

■ Appliances & services are untested, dimensions are approximate and floor plans are not to scale



10435936/20251112/BC/RC