



**The Yew, Restrop Road, Purton**  
Swindon

**£825,000**





# The Yew, Restrop Road

Purton, Swindon

Presenting this IMPRESSIVE and SUBSTANTIAL FIVE BEDROOM DETACHED HOME, a NEWLY BUILT residence offering LUXURIOUS and VERSATILE family living in a highly sought-after location. The property boasts a WELCOMING ENTRANCE HALL leading to a SPACIOUS SITTING ROOM, ideal for relaxing and entertaining guests. The HEART OF THE HOME is the stunning KITCHEN / BREAKFAST / FAMILY ROOM, featuring CONTEMPORARY FITTINGS and ample space for dining and socialising, making it perfect for modern family life. A dedicated STUDY provides a quiet retreat for working from home, while the separate UTILITY and WC add further practicality. Upstairs, the property offers FIVE GENEROUS BEDROOMS, including TWO EN-SUITES for added privacy and comfort, and a well-appointed FAMILY BATHROOM. This exceptional home is offered with PART EXCHANGE AVAILABLE, making your move seamless and stress-free. Additional benefits include a DOUBLE GARAGE and TWO PARKING SPACES, ensuring ample room for vehicles and storage. This property is ideally suited for those seeking a PREMIUM LIFESTYLE in a thriving community.

- PART EXCHANGE AVAILABLE ON THIS PROPERTY
- NEW HOME
- DETACHED
- KITCHEN / BREAKFAST / FAMILY ROOM
- SITTING ROOM
- STUDY
- UTILITY AND WC
- FIVE BEDROOMS
- TWO EN-SUITES AND FAMILY BATHROOM
- DOUBLE GARAGE AND 2 PARKING SPACES



## Entrance Hall

## Sitting Room

13' 7" x 17' 11" (4.13m x 5.45m)

## Kitchen / Breakfast / Family Room

28' 7" x 15' 2" (8.71m x 4.62m)

## Dining Room

13' 6" x 17' 11" (4.11m x 5.45m)

## Study

8' 3" x 9' 2" (2.51m x 2.79m)

## Utility and WC

## Landing

## Bedroom 1

15' 4" x 12' 8" (4.68m x 3.86m)

## En-Suite

## Bedroom 2

10' 8" x 13' 4" (3.26m x 4.06m)

## En-Suite

## Bedroom 3

14' 3" x 9' 2" (4.34m x 2.80m)

## Bedroom 4

11' 8" x 11' 5" (3.55m x 3.49m)

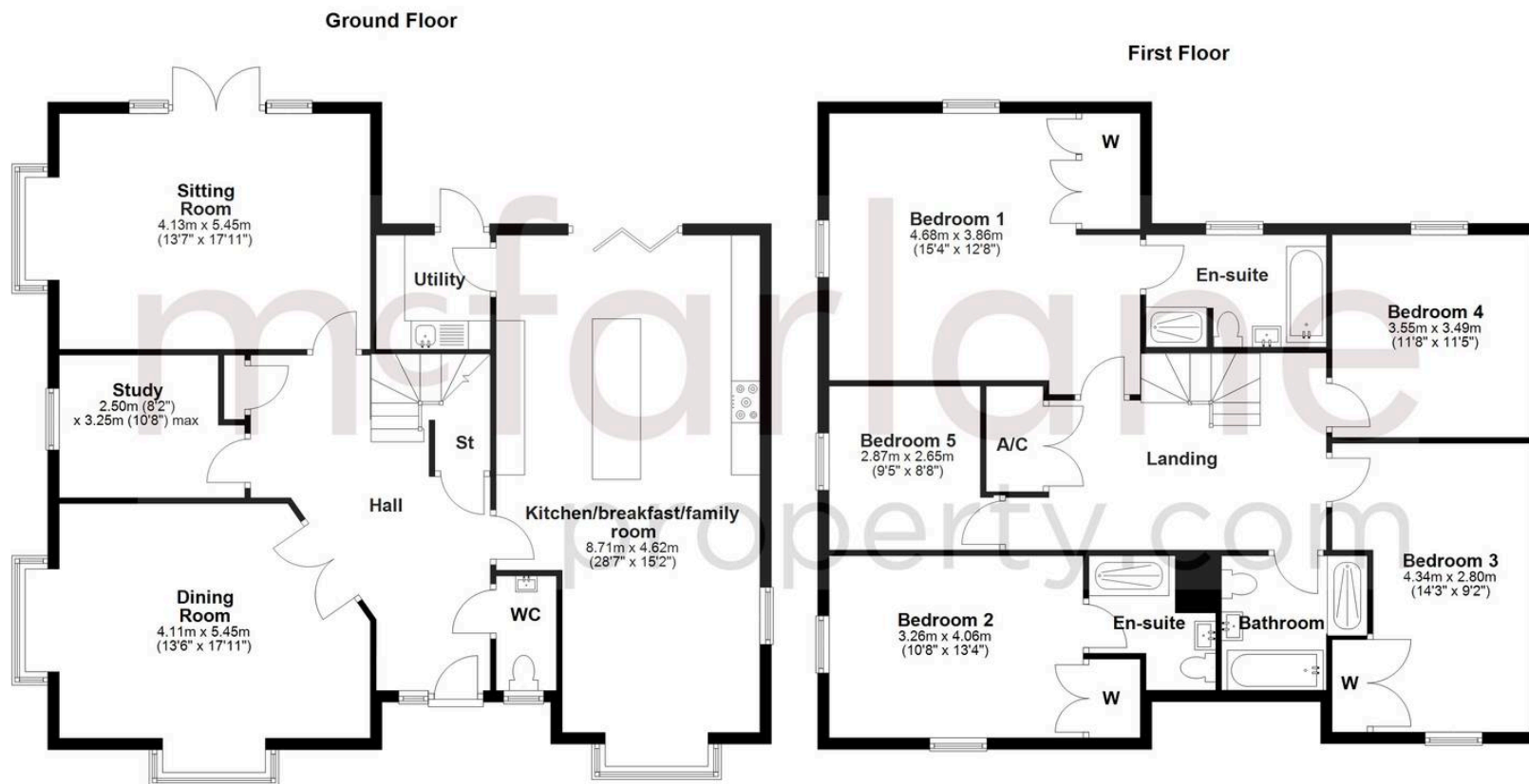
## Bathroom

## Bedroom 5

9' 5" x 8' 8" (2.87m x 2.65m)







## McFarlane Sales & Lettings

Cricklade Sales 36 High Street, Cricklade - SN6 6AY

01793 751044 • [cricklade@mcfarlaneproperty.com](mailto:cricklade@mcfarlaneproperty.com) • [www.mcfarlaneproperty.com/](http://www.mcfarlaneproperty.com/)